

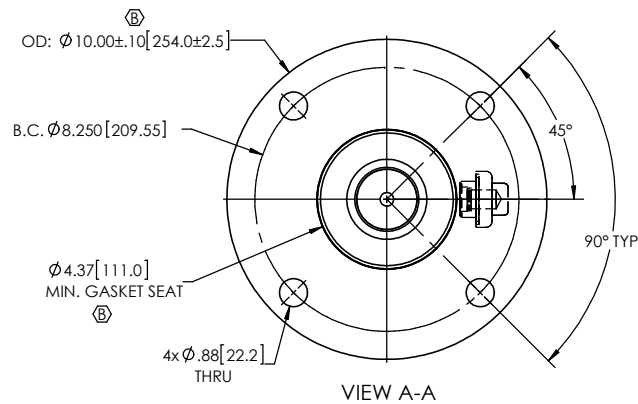
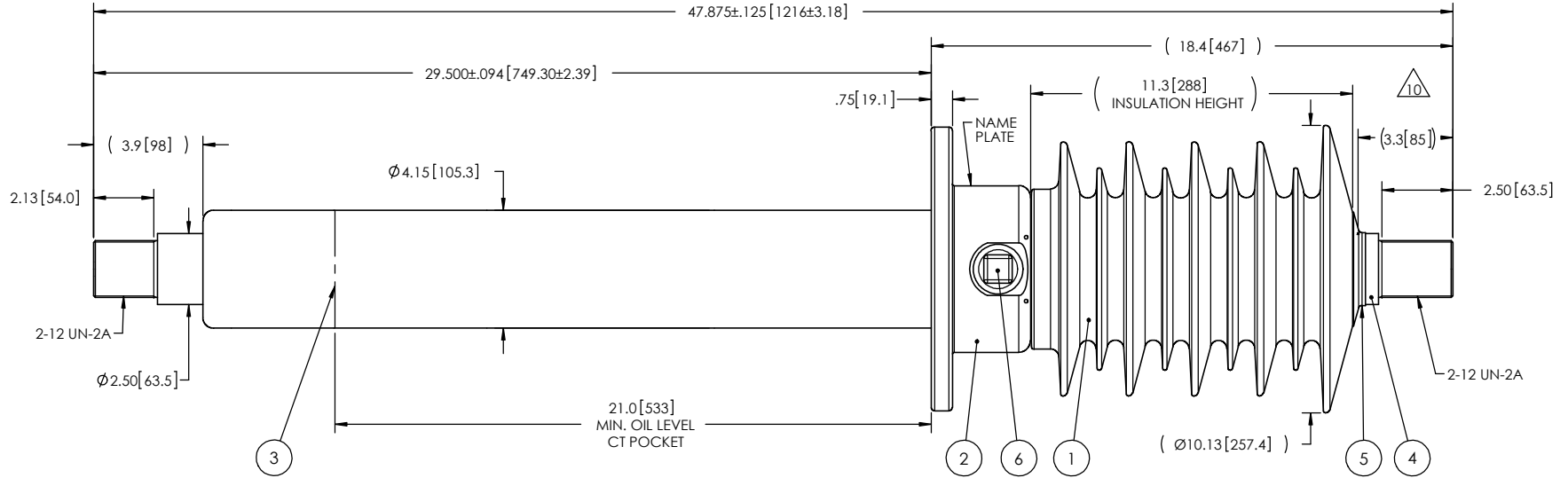
NOTES:

- 1 CREEPAGE DISTANCE: 34.5" / 877mm
- 2 ARC DISTANCE: 14.8" / 376mm
- 3 NOMINAL VOLTAGE: 25kV
- 4 NOMINAL CURRENT: 3000A
- 5 VOLTAGE WITHSTAND, 60 sec.: 60kV
- 6 BIL: 150kV
- 7 ROUTINE TEST ACCORDING TO: IEEE C57.19.01
- 8 MAX. TORQUE APPLIED ON FLANGE BOLTS: 70 lbf·ft / 94.9 N·m
- 9 WEIGHT: 119 lb / 53.9 Kg

△10 SILVER PLATED, AS PER ASTM B700, TYPE 1, GRADE D, CLASS N, NO NICKEL LAYER, FROM 13 TO 20 MICROMETERS THICKNESS

REVISIONS

| ZONE | REV. | DESCRIPTION | DRAWN BY | DATE | APPR. |
|----------|------|---|----------|------------|-------|
| | A | CHANGE DIMENSION FROM 48.0" TO 47.9" | J.N.P. | 2014-10-09 | Y.V. |
| C6 A6 | B | INCREASE THE TOLERANCES ON THE FLANGE OUTSIDE DIAMETER. ADD THE MINIMUM GASKET SEAT DIMENSION. | J.C. | 2017-02-21 | Y.V. |



This drawing is the proprietary property of Electro Composites (2008) ULC, not part of the public domain, and is issued with the express understanding and agreement that it is not to be reproduced or copied in whole or in part or issued for furnishing information to others, or used directly or indirectly, in any way detrimental to the interest of Electro Composites (2008) ULC and is to be returned upon request by Electro Composites (2008) ULC. All Rights Reserved.

| ITEM NO. | QTY | DRAWING NO. | PART NO. | DESCRIPTION | NOTE / MAT'L |
|----------|-----|---------------|----------|-------------------------------|--------------|
| 6 | 1 | S-1001-2022 | | CAPACITANCE TAP ASSEMBLY | ALUMINUM |
| 5 | 1 | S-3692-2417-0 | | CAP | COPPER |
| 4 | 1 | S-8337-7916 | | ROD ASSEMBLY | COPPER |
| 3 | 1 | S-6106-5726 | | SHIELD ASSEMBLY | COPPER |
| 2 | 1 | S-8337-7914 | | FLANGE | ALUMINUM |
| 1 | 1 | S-8337-7913 | -001 | CASTING, CYCLOALIPHATIC RESIN | EC-APG-02 |

PARTS LIST

GENERAL TOLERANCES (UNLESS OTHERWISE SPECIFIED)

| | |
|--------|--------|
| X. | ±0.125 |
| .X | ±0.094 |
| .XX | ±0.063 |
| .XXX | ±0.031 |
| ANGLES | ±0.25° |
| RADIUS | ±0.031 |

REMOVE BURRS AND BREAK SHARP EDGES

DIMENSIONS ARE IN INCHES (UNLESS OTHERWISE SPECIFIED)

Electro Composites
solid HV bushings solution

TITLE:
SDC® BUSHING 25kV, 3000A
MODEL: 150-030-210-00

| | | | | | |
|--------------------------|---------------------|---------------|-----------|----------------------------------|------------------|
| DRAWN BY: J.N.PILOTTE | DATE: 2013/05/03 | FORMAT: A | CAGE CODE | DRAWING NO.: S-8337-7913 | REVISION: B |
| CHECK BY: | | PROJECTING: | | GENERATED BY: SolidWorks 2013 | SHEET: 1 of 1 |
| PROJECT MANAGER: | | SCALE: 1:6 | | | |