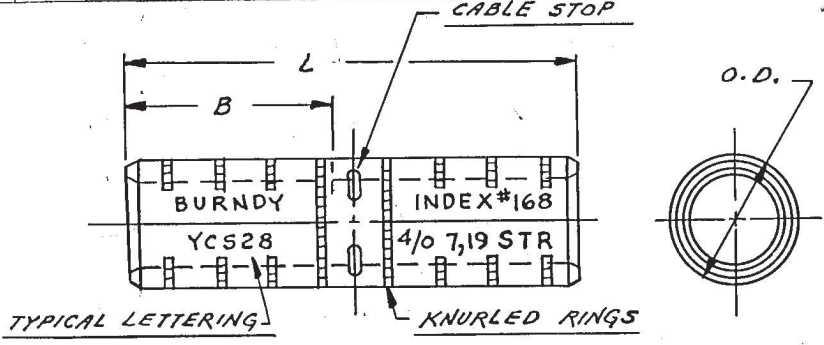
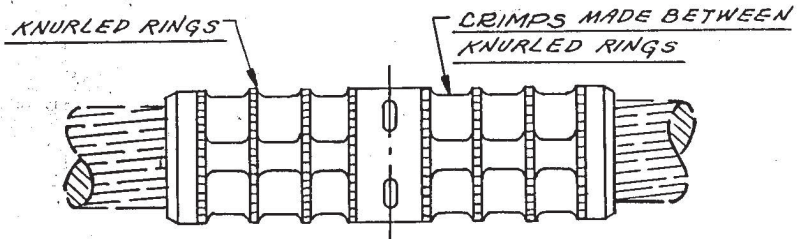


50 6-5-87 ADDED NOTE 3 (ECP 4337) LEB JFM



VIEW BEFORE INSTALLATION

MATERIAL: COPPER



VIEW AFTER INSTALLATION

CONDUCTORS ACCOMMODATED:  
HARD DRAWN  
MEDIUM HARD DRAWN

NOTE:  
 ▷ KEARNEY 5/16 OR MICROPRESS J INSTALLATION TOOLING MAY BE USED.  
 ▷ KEARNEY DIE 781 OR 840 MAY BE USED WITH KEARNEY WHZ TOOL.

# 8 CRIMPS PER END WHEN USING THE MD2-26 HYTOOL

MDG USE DIE 163, W-163 DIE SET. 3 CRIMPS PER END.  
 Δ FOR MD2-TOOLS-USE DIE INDEX NO. 505.

\* FOR ADDITIONAL INSTALLATION DATA SEE SA39020.

CONDUCTOR		CATALOG No.	O.D.	B APPROX.	L APPROX.	INSTALLATION DATA *			REF. DWG. No.	REV.	
CABLE	STR.					INDEX No.	HY3AA HYPRESS	HY488 HYPRESS			CRIMPS PER END
#8 (.129)		YDS8W	.25	.69	1.50	171	ABWYD		2	FC16975	
#8 (.146)	7	YDS8C	.26	.69	1.50	171	ABWYD		2	FC20718	
#6 SOL (.162)		YDS6W	.32	1.25	2.62	161	AGCYD		4	FC16976	45
#6 (.183)	7	YDS6C	.32	1.25	2.62	161	AGCYD		4	FC16964	41
#4 SOL (.204)		YDS4W	.38	1.25	2.62	162	AACYD		4	FC16977	
#4 (.231)	7	YDS4C	.40	1.31	2.75	162	AACYD		4	FC16965	
#2 SOL (.258)		YDS2W	.48	1.94	4.00	163	AACYD		6	FC16978	
#3 (.286)	3	YCS2C	.50	1.19	2.50	163	AACYD		3	FC16913	
#2 (.221)	7	YCS2C	.50	1.19	2.50	163	AACYD		3	FC16913	
#2 (.320)	3	YDS2C3	.53	1.88	3.88	163	AACYD		6 Δ	FC17990	41
#1 SOL (.289)		YCS1W	.55	1.36	4.08	164	AICYD	C164	4 †	FC22652	41
#1 (.330)	7,19	YCS1C	.56	1.50	3.12	164	AICYD	C164	4 †	FC16914 SC15548	
1/0 SOL (.325)		YCS75	.61	1.74	3.63	287	A25YD	C165	3	FC21841	41
1/0 (.373)	7,19	YCS25	.62	1.47	3.09	165	A25YD	C165	3	FC16915 SC15548	42
2/0 (.437)	7,12,19,37	YCS26	.71	1.59	3.34	166	A26YD	C166	3	FC16916 SC15548	42
3/0 (.470)	7,19	YCS27	.79	1.56	3.27	167	A27YD	C167	3	FC16917 SC15548	42
4/0 (.552)	7,12,19	YCS28	.89	1.47	3.09	168	A28YD	C168	3	FC16918 SC15548	42
250 MCM (.575)	7,37,19	YCS29	.95	1.75	3.62	169	A29YD		4	FC16919	38
250 MCM (.600)	12	YCS29-12	.96	1.81	3.85	169	A29YD		4	FC20738	41
300 MCM (.630)	19,37	YCS30	1.05	1.75	3.62	170	A30YD		4	FC16960	
350 MCM (.710)	12,19,37	YCS31	1.17	2.66	5.44	267		C267	2	FC18510	41
400 MCM (.728)	37	YCS32	1.24	2.78	5.72	209		C209	2	FC17447	41
500 MCM (.814)	19,37	YCS34	1.38	2.50	5.12	210		C210	2	FC17515	
600 MCM (.893)	37	YCS36	1.55	2.12	5.06	576		C576	2	FC28726	
1000 MCM (1.152)	37,61	YCS44	2.00	3.17	7.69	345		C345	4	FC21779	40
750 MCM (.998)	37,61	YCS39	1.70	3.00	6.88	627		C627	3	FC46630	43
2/0 SOL (.355)		YCS76	.68	1.73	3.86	208	A26YD	C166	3	FC50281	44
3/0 (.437)		YCS76	.68	1.73	3.86	208	AICYD-2				
4/0 SOL (.460)	1	YCS78	.86	1.46	3.39	208	A28YD	C168	3	FC52274	46

MARK	DATE	REVISION	BY	C'D
4-3	7-22-60	YCS39 ADDED PER G. PETERS	B.W.	9/6
4-2	11-10-58	REV. REF. PRINT (EC 16023)	J.W.B.	9/6
4-1	11-22-57	REV. REF. PRINT (EC'S 12378, 12496 & 13160)	P.J.H.	11-10-58
4-0	4-26-57	YCS44 DIM 769 WAS L.72. (EC 13308)	A.H.A.	9/6
3-9	11-14-56	YCS26 - 37 STR. ADDED (EC 13101)	P.J.H.	1-15-57
3-8	9-29-53	ADDED 7 STR. TO 250 MCM (EC 9032)	R.M.A.	C.S.
3-7	8-17-53	REDRAWN PER C.S.	P.D.	J.W.

**HYSPLICE, LOOP (COPPER)**

CAT. NO: YCS (TABLE) SCALE

DRAWN 8-17-53 P.D. CHECKED 8-19-53 J.W.



DRAWING NO. REV. **SC15042**