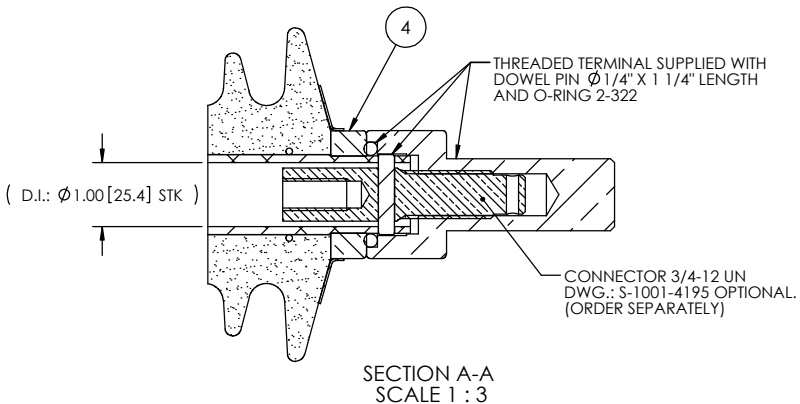
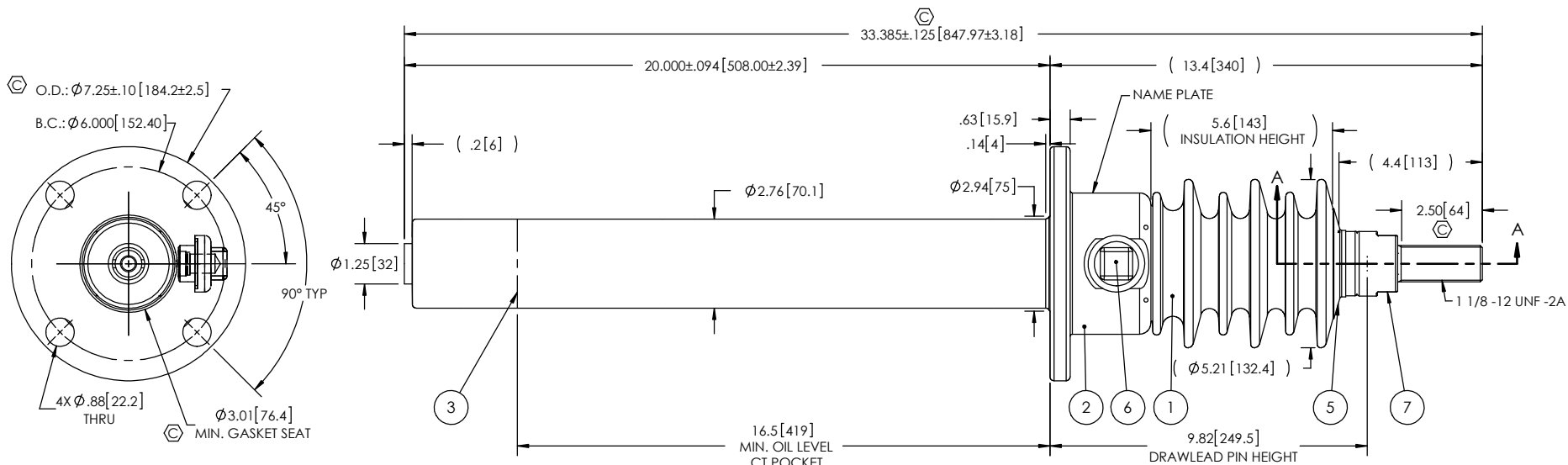


- NOTES:
- 1 CREEPAGE DISTANCE: 13.6" / 345mm
 - 2 ARC DISTANCE: 6.5" / 165mm
 - 3 NOMINAL VOLTAGE: 15kV
 - 4 NOMINAL CURRENT: 600A
 - 5 VOLTAGE WITHSTAND, 60 sec.: 50kV
 - 6 BIL : 110kV
 - 7 ROUTINE TEST ACCORDING TO: IEEE C57.19.01
 - 8 MAX. TORQUE APPLIED ON FLANGE BOLTS: 40 lbf·ft / 54.2 N·m
 - 9 WEIGHT: 19 lb / 8.6 kg

REVISIONS					
ZONE	REV.	DESCRIPTION	DRAWN BY	DATE	APPR.
	A	UPDATE THE DRAWING ACCORDING TO STANDARDS	J. CLICHE	2012/04/04	Y.V.
B4	B	ADD A CAPACITANCE TAP ON THE FLANGE	J. CLICHE	2012/04/12	Y.V.
A2 B4 B4 C6 B4, D1 E3 E6	C	ADD THE "SDC" DESIGNATION TO THE BUSHING NAME. TUBE ASSEMBLY AND CAP MAT'L CHANGE TO ALUMINUM SHIELD ASSEMBLY S-3712-2466 CHANGE TO S-6085-5746 ADD THE MINIMUM GASKET SEAT DIMENSION. THREADED TERMINAL S-3712-7177 CHANGE TO STANDARD S-4904-4657-0 OVERALL DIMENSION 32.5" BECOMES 33.385" INCREASE THE TOLERANCES ON THE FLANGE OUTSIDE DIAMETER.	M. FORGET	2018-10-03	Y.V.



This drawing is the proprietary property of Electro Composites (2008) ULC, not part of the public domain, and is issued with the express understanding and agreement that it is not to be reproduced or copied in whole or in part or issued for furnishing information to others, or used directly or indirectly, in any way detrimental to the interest of Electro Composites (2008) ULC and is to be returned upon request by Electro Composites (2008) ULC. All Rights Reserved.

ITEM NO.	QTY	DRAWING NO.	PART NO.	DESCRIPTION	NOTE / MAT'L
7	1	S-4904-4657-0		THREADED TERMINAL KIT	COPPER
6	1	S-1001-2022		CAPACITANCE TAP ASSEMBLY	ALUMINUM
5	1	S-1344-0162-1		CAP	ALUMINUM
4	1	S-3712-2467		TUBE ASSEMBLY	ALUMINUM
3	1	S-6085-5746		SHIELD ASSEMBLY	COPPER
2	1	S-3712-2464		FLANGE	ALUMINUM
1	1	S-3712-2355	-001	CASTING, CYCLOALIPHATIC RESIN	EC-APG-02

PARTS LIST

GENERAL TOLERANCES (UNLESS OTHERWISE SPECIFIED)

X.	±0.125
.X	±0.094
.XX	±0.063
.XXX	±0.031
ANGLES	±0.25°
RADIUS	±0.031

REMOVE BURRS AND BREAK SHARP EDGES

DIMENSIONS ARE IN INCHES (UNLESS OTHERWISE SPECIFIED)

REPLACE:

DRAWN BY: P. ST-AUBIN DATE: 2004/03/29

CHECK BY:

PROJECT MGR.:

Electro Composites
solid HV bushings solution

TITLE: SDC® BUSHING 15kV, 600A
MODEL: 110-006-T-153-00

FORMAT	CAGE CODE	DRAWING NO.	REVISION
A		S-3712-2355	C
SCALE	GENERATED BY:	SHEET	
1:5	SolidWorks 2013	1 of 1	