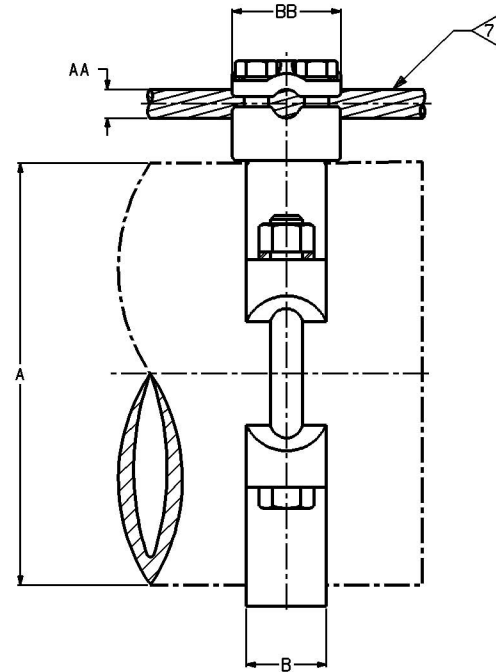
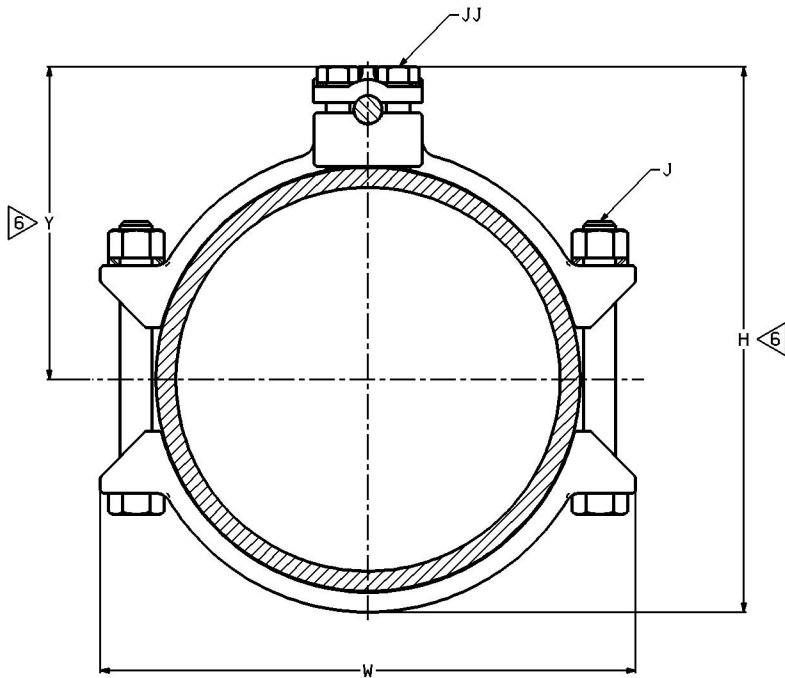


A		AA									CAT NO.	B		BB		H		J		JJ		W		Y		TORQUE	
I.P.S. PIPE ACCOMMODATED		COPPER CONDUCTOR ACCOMMODATED										(in)	[mm]	(in)	[mm]	(in)	[mm]	(in)	[mm]	(in)	[mm]	(in)	[mm]	(in)	[mm]	Lb*in	N*m
NOMINAL DIAMETER	ACTUAL DIAMETER	AWG				METRIC WIRE SIZE																					
(in)	[mm]	SIZE	MIN DIA	MAX DIA	SIZE	MIN DIA	MAX DIA	SIZE	MIN DIA	MAX DIA																	
6	6.625 [162]	4 sol	0.204	2/0 str	0.419	25mm ² str	[6.5]	70mm ² str	[10.9]	GAR8626	1.25 [31.8]	1.69 [42.9]	2.50 [64]	1/2 [12.7]	3/8 [9.5]	8.38 [212.9]	4.88 [124.0]	480	54.1								
6	6.625 [162]	2/0 sol	0.365	250 kcmil	0.575	70mm ² str	[10.9]	120mm ² str	[14.4]	GAR8629	1.25 [31.8]	1.81 [46.0]	8.81 [224]	1/2 [12.7]	3/8 [9.5]	8.38 [212.9]	5.16 [131.1]	480	54.1								
6	6.625 [162]	300 kcmil	0.63	500 kcmil	0.814	150mm ² str	[16]	240mm ² str	[20.3]	GAR8634	1.31 [33.3]	2.06 [52.3]	8.75 [222]	1/2 [12.7]	3/8 [9.5]	8.38 [212.9]	5.12 [130.0]	480	54.1								
8	8.625 [211]	4 sol	0.204	2/0 str	0.419	25mm ² str	[6.48]	70mm ² str	[10.9]	GAR8826	1.25 [31.8]	1.69 [42.9]	10.41 [264]	1/2 [12.7]	3/8 [9.5]	10.38 [263.7]	5.78 [146.8]	480	54.1								
12	12.75 [312]	500 kcmil	0.814	1000 kcmil	1.152	300mm ² str	[22.6]	500mm ² str	[28.3]	GAR12844	1.75 [44.5]	2.62 [66.5]	15.22 [387]	5/8 [15.9]	3/8 [9.5]	14.88 [378.0]	8.44 [214.4]	660	74.4								
6	6.625 [162]	8 sol	0.129	4 str	0.231	10mm ² sol	[3.58]	16mm ² str	[5.1]	GAR864C	1 [25.4]	1.31 [33.3]	8.19 [208]	3/8 [9.5]	5/16 [7.9]	8.03 [204.0]	4.62 [117.3]	240	27.0								
8	8.625 [211]	8 sol	0.129	4 str	0.231	10mm ² sol	[3.58]	6mm ² sol	[2.8]	GAR884C	1 [25.4]	1.31 [33.3]	10.17 [258]	3/8 [9.5]	5/16 [7.9]	10.40 [264.2]	5.62 [142.7]	240	27.0								
7	7.625 [187]	2/0 sol	0.365	250 kcmil	0.575	70mm ² str	[10.9]	120mm ² str	[14.4]	GAR8729	1.25 [31.8]	1.61 [40.9]	9.81 [249]	1/2 [12.7]	3/8 [9.5]	9.56 [242.8]	5.66 [143.8]	480	54.1								



NOTES:

1. MATERIAL: CAST COPPER ALLOY
2. FINISH: BRIGHT DIPPED.
- 3 NOT UL LISTED.
4. DIMENSIONS IN BRACKETS [] ARE IN MILLIMETERS ROUNDED OFF TO THE NEAREST MILLIMETER, UNLESS OTHERWISE NOTED, AND ARE FOR REFERENCE ONLY.
- 5 SILICON BRONZE STUD.
- 6 MAX. WITH MAX. CABLE IN PLACE BEFORE COMPRESSION.
- 7 CABLE IN OPTIONAL POSITION CAN BE ROTATED 90° FROM POSITION SHOWN.

GROUND CLAMP			
CAT NO: GAR-(TABLE)	SCALE: NONE		
DRAWN: R. PERREAU	7/25/94	CHECKED: K. NELLO	7/25/94
DESIGN: APP'L. G. DI TROIA	11/11/93	APP'L. N/A	
D.L. APP'L. A. LLOYD	12/3/93	APP'L. K. WOOD	11/11/93
CAD FILE: SD15789-SHT03		PT. REF: N/A	
PROJECT: .		REV: .	
DRAWING NO. SD15789		REV. 0	
SHEET 3 OF 3			

0	7/25/94	ISSUED SHEET PER (FORM 1330)	RDP	KFM
REV.	DATE	DESCRIPTION	BY	C.K'D.

