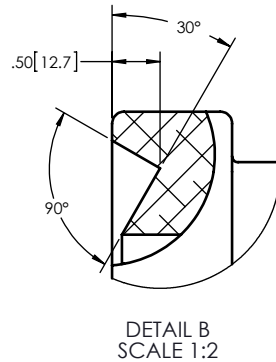
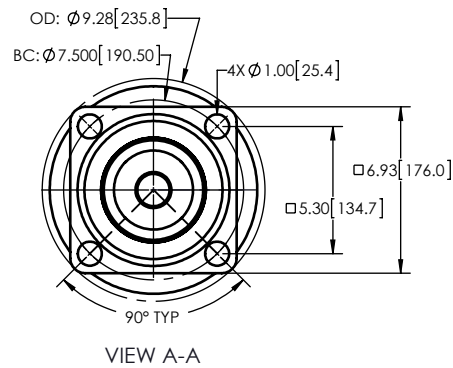
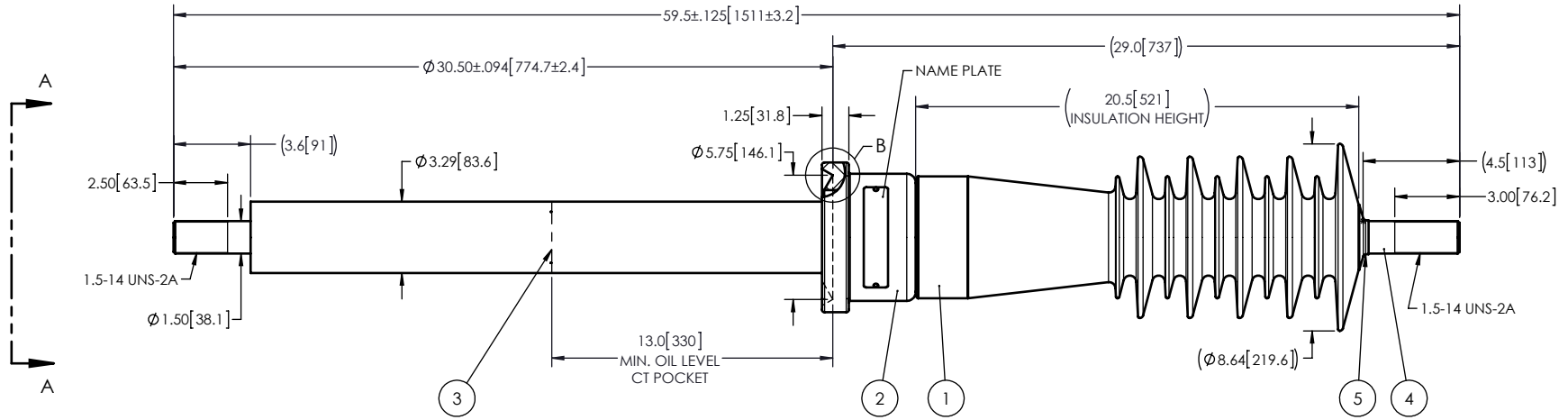


NOTES:

- 1 CREEPAGE DISTANCE: 45.1" / 1146mm
- 2 ARC DISTANCE: 22.7" / 578mm
- 3 NOMINAL VOLTAGE: 34.5kV
- 4 NOMINAL CURRENT: 1200A
- 5 WITHSTAND VOLTAGE AT 60 sec.: 80kV
- 6 B.I.L. : 200kV
- 7 ROUTINE TEST ACCORDING TO: IEEE C57.19.01
- 8 MAX. TORQUE APPLIED ON FLANGE BOLTS: 40 lbf·ft / 54.2 N·m
- 9 WEIGHT: 81 lb / 36.7 Kg



ITEM NO.	QTY	DRAWING NO.	PART NO.	DESCRIPTION	NOTE / MAT'L
5	1	S-1001-0007		CAP	COPPER
4	1	S-5388-5083		ROD ASSEMBLY	COPPER
3	1	S-4129-2852		SHIELD ASSEMBLY	COPPER
2	1	S-8397-7836		FLANGE	ALUMINUM
1	1	S-8397-7835	-001	CASTING, CYCLOALIPHATIC RESIN	EC-APG-02

PARTS LIST

GENERAL TOLERANCES (UNLESS OTHERWISE SPECIFIED)		Electro Composites solid HV bushings solution	
X.	±0.125		
.X	±0.094	TITLE: SDC® BUSHING 34.5kV, 1200A MODEL: 200-012-B-168-02	
.XX	±0.063	DRAWN BY: J.N.PILOTTE	DATE: 2013/03/12
.XXX	±0.031	CHECK BY:	
ANGLES	±0.25°	PROJECT ENG.:	
RADIUS	±0.031	PROJECT MANAGER:	
REMOVE BURRS AND BREAK SHARP EDGES		FORMAT: A	CAGE CODE:
DIMENSIONS ARE IN INCHES (UNLESS OTHERWISE SPECIFIED)		DRAWING NO.: S-8397-7835	REVISION: NR
		SCALE: 1:8	GENERATED BY: SolidWorks 2012
		SHEET: 1 of 1	

This drawing is the proprietary property of Electro Composites (2008) ULC, not part of the public domain, and is issued with the express understanding and agreement that it is not to be reproduced or copied in whole or in part or issued for furnishing information to others, or used directly or indirectly, in any way detrimental to the interest of Electro Composites (2008) ULC and is to be returned upon request by Electro Composites (2008) ULC. All Rights Reserved.