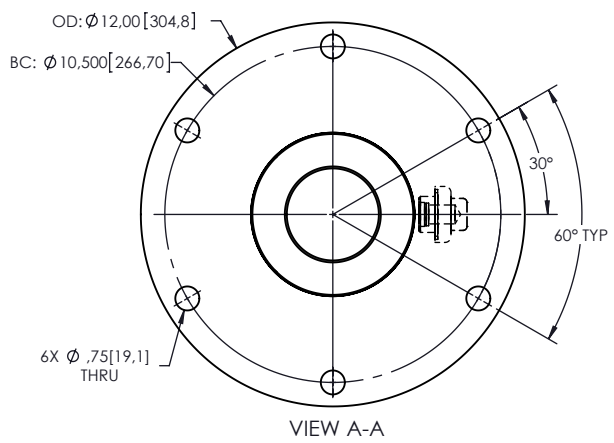
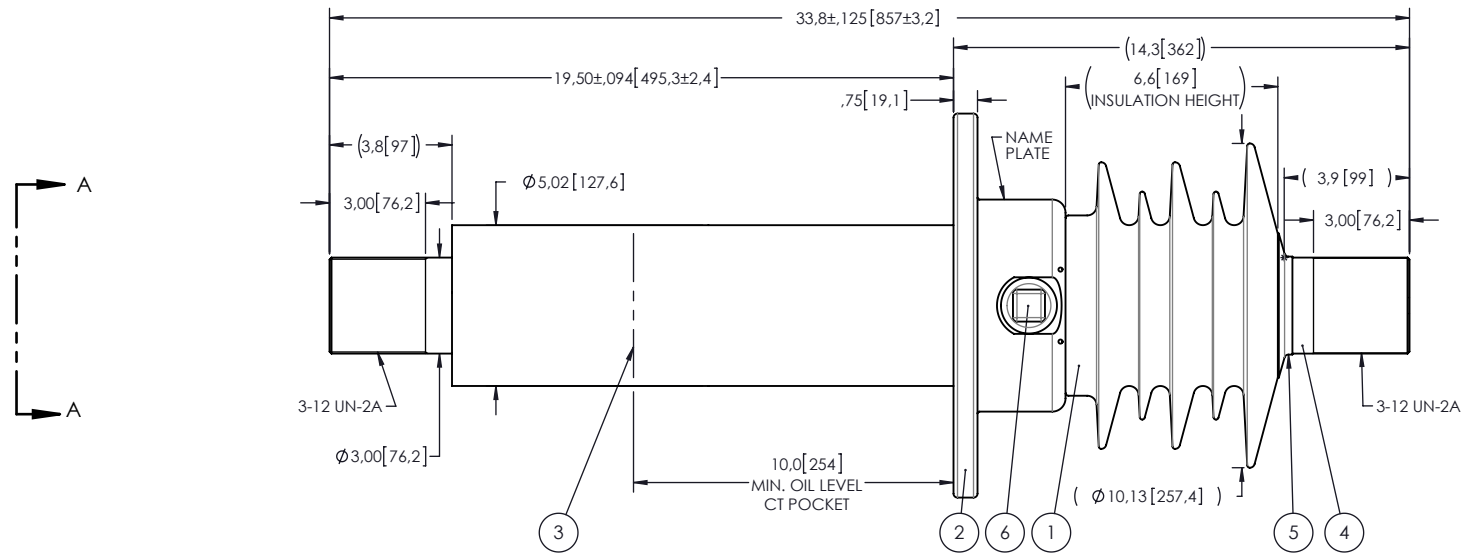


NOTES:

- | | | |
|---|--------------------------------------|------------------------|
| 1 | CREEPAGE DISTANCE: | 20.2' / 513mm |
| 2 | ARC DISTANCE: | 9.4' / 239mm |
| 3 | NOMINAL VOLTAGE: | 8.7kV |
| 4 | NOMINAL CURRENT: | 3000A |
| 5 | WITHSTAND VOLTAGE AT 60 sec.: | 35kV |
| 6 | B.I.L.: | 95kV |
| 7 | ROUTINE TEST ACCORDING TO: | IEEE C57.19.01 |
| 8 | MAX. TORQUE APPLIED ON FLANGE BOLTS: | 70 lbf X ft / 94.9 N·m |
| 9 | WEIGHT: | 115 lb / 52.2 Kg |

REVISIONS					
ZONE	REV.	DESCRIPTION	DRAWN BY	DATE	APPR.



ITEM NO.	QTY	DRAWING NO.	PART NO.	DESCRIPTION	NOTE / MAT'L
6	1	S-1001-2022		CAPACITANCE TAP ASSEMBLY	ALUMINUM
5	1	S-3529-2532		CAP	COPPER
4	1	S-8142-7557		ROD ASSEMBLY	COPPER
3	1	S-8142-7556		SHIELD ASSEMBLY	COPPER
2	1	S-8142-7555		FLANGE	ALUMINUM
1	1	S-8142-7554	-001	CASTING, CYCLOALIPHATIC RESIN	EC-APG-02

PARTS LIST					
GENERAL TOLERANCES (UNLESS OTHERWISE SPECIFIED) X. ±0.125 .X ±0.094 .XX ±0.063 .XXX ±0.010 ANGLES ±0.25° RADIUS 0.031			Electro Composites™ solid HV bushings solution		
REMOVE BURRS AND BREAK SHARP EDGES DIMENSIONS ARE IN INCHES (UNLESS OTHERWISE SPECIFIED)			TITLE: SDC® BUSHING 8.7kV 3000A MODEL: 095-030-T-188-01		
DRAWN BY: J. CLICHE	DATE: 2012/10/10	PROJECT ENG.:	PROJECT MANAGER:	SCALE: 1 : 10	DRAWING NO.: S-8142-7554
CHECK BY:	PROJECT NO.:	CAGE CODE:	REVISION: NR	GENERATED BY: SolidWorks 2012	SHEET: 1 of 1

This drawing is the proprietary property of Electro Composites (2008) ULC, not part of the public domain, and is issued with the express understanding and agreement that it is not to be reproduced or copied in whole or in part or issued for furnishing information to others, or used directly or indirectly, in any way detrimental to the interest of Electro Composites (2008) ULC and is to be returned upon request by Electro Composites (2008) ULC. All Rights Reserved.