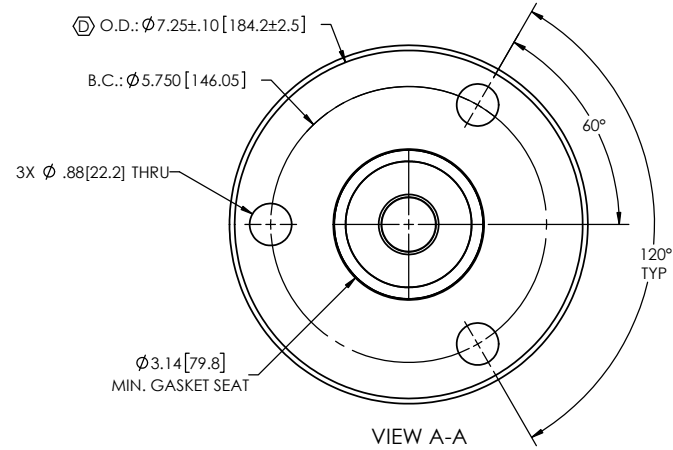
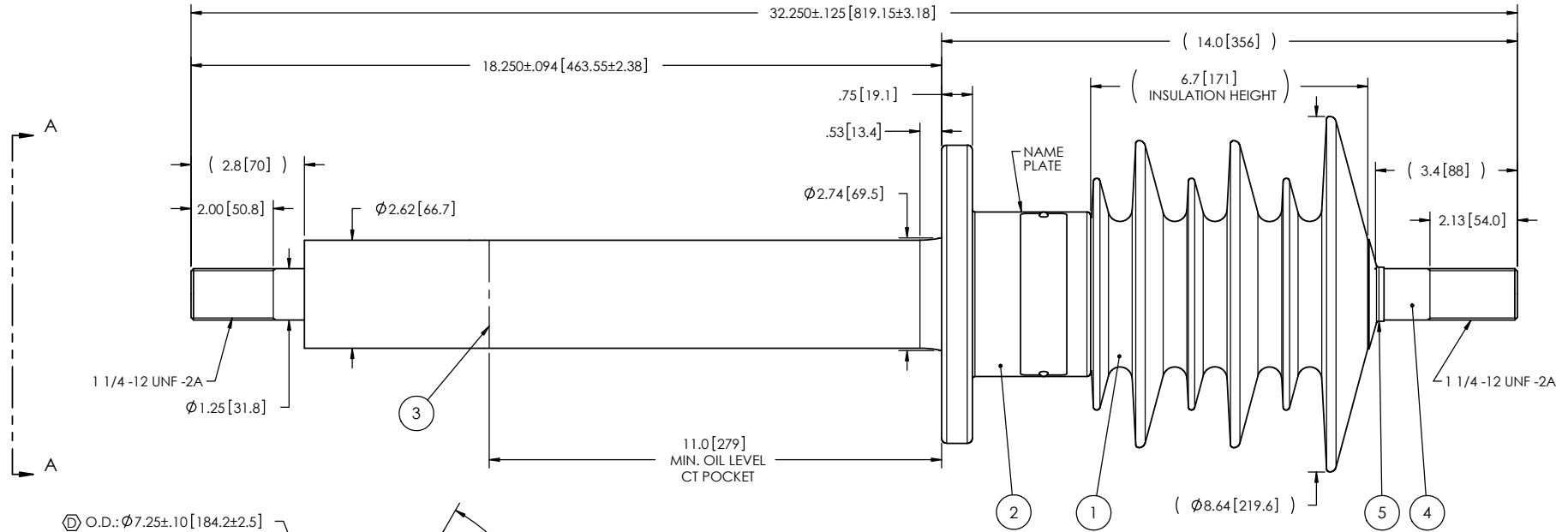


NOTES:

- 1 CREEPAGE DISTANCE: 22.2" / 564mm
- 2 ARC DISTANCE: 10.1" / 257mm
- 3 NOMINAL VOLTAGE: 25kV
- 4 NOMINAL CURRENT: 1200A
- 5 VOLTAGE WITHSTAND, 60 sec.: 60kV
- 6 BIL: 150kV
- 7 ROUTINE TEST ACCORDING TO: IEEE C57.19.01
- 8 MAX. TORQUE APPLIED ON FLANGE BOLTS: 40 lbf·ft / 54.2 N·m
- 9 WEIGHT: 31 lb / 14.1 kg

REVISIONS					
ZONE	REV.	DESCRIPTION	DRAWN BY	DATE	APPR.
E1, E5, D6	B	THE LOWER THREADED LENGTH BECOMES 2.0" LONG & THE LENGTH OF THE EXTERNAL ROD BECOMES 2.8"	J. CLICHE	2011/08/25	Y.V.
A2 B6	C	ADD THE "SDC" DESIGNATION TO THE BUSHING NAME ADD THE "MINIMUM GASKET SEAT" DIMENSION	J. CLICHE	2014-10-07	Y.V.
C6	D	INCREASE THE TOLERANCES ON THE FLANGE OUTSIDE DIAMETER.	M. FORGET	2023-03-08	Y.V.



ITEM NO.	QTY	DRAWING NO.	PART NO.	DESCRIPTION	NOTE / MAT'L
5	1	S-1016-0008		CAP	COPPER
4	1	S-4262-2969		ROD ASSEMBLY	COPPER
3	1	S-4262-2968		SHIELD ASSEMBLY	COPPER
2	1	S-4262-2967		FLANGE	ALUMINUM
1	1	S-4262-2964	-001	CASTING, CYCLOALIPHATIC RESIN	EC-APG-02

PARTS LIST					
GENERAL TOLERANCES (UNLESS OTHERWISE SPECIFIED)			<b>Electro Composites</b> solid HV bushings solution		
X.	±0.125				
.X	±0.094		TITLE: SDC® BUSHING 25kV, 1200A MODEL: 150-012-B-199-00		
.XX	±0.063		DRAWN BY: P. ST-AUBIN	DATE: 2005/05/13	
.XXX	±0.031		CHECK BY:		
ANGLES	±0.25°		PROJECT ENG.:		
RADIUS	±0.031		PROJECT MANAGER:		
REMOVE BURRS AND BREAK SHARP EDGES			FORMAT: A	CAGE CODE:	DRAWING NO.: S-4262-2964
DIMENSIONS ARE IN INCHES (UNLESS OTHERWISE SPECIFIED)			SCALE: 1:4	GENERATED BY: SolidWorks 2022	SHEET: 1 de 1

This drawing is the proprietary property of Electro Composites (2008) ULC, not part of the public domain, and is issued with the express understanding and agreement that it is not to be reproduced or copied in whole or in part or issued for furnishing information to others, or used directly or indirectly, in any way detrimental to the interest of Electro Composites (2008) ULC and is to be returned upon request by Electro Composites (2008) ULC. All Rights Reserved.