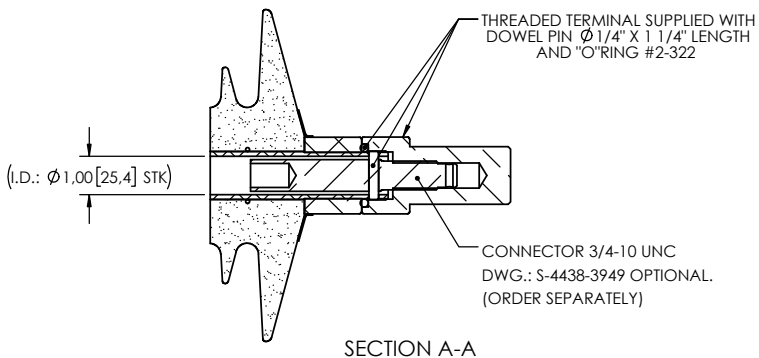
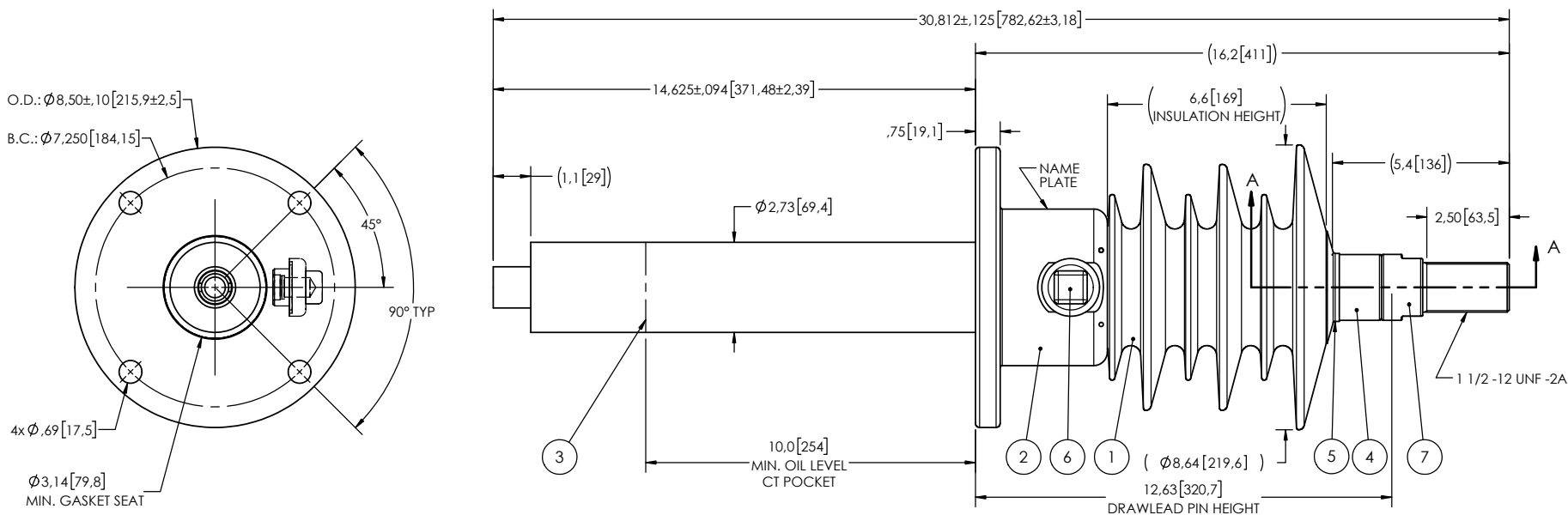


- NOTES:
- 1 CREEPAGE DISTANCE: 21.0" / 534mm
 - 2 ARC DISTANCE: 9.1" / 231mm
 - 3 NOMINAL VOLTAGE: 15kV
 - 4 NOMINAL CURRENT: 400A
 - 5 VOLTAGE WITHSTAND, 60 sec.: 50kV
 - 6 BIL: 110kV
 - 7 APPLICATION STANDARD: CSA C88.1-96
 - 8 MAX. TORQUE APPLIED ON FLANGE BOLTS: 40 lbf·ft / 54.2 N·m
 - 9 WEIGHT: 26 lb / 11.8 kg

REVISIONS					
ZONE	REV.	DESCRIPTION	DRAWN BY	DATE	APPR.
A1	A	ADD THE "SDC" DESIGNATION TO THE BUSHING NAME ADD THE "MINIMUM GASKET SEAT" DIMENSION.	J. CLICHE	2014-09-16	Y.V.
	B	DESIGN OPTIMISATION	J.N.PILOTTE	2014-09-26	Y.V.
A1	C	MODEL 110-004-T-434-04 BECOMES 110-004-T-205-06	M. FORGET	2020-10-13	Y.V.



ITEM NO.	QTY	DRAWING NO.	PART NO.	DESCRIPTION	NOTE / MAT'L
7	1	S-4831-4209-0		THREADED TERMINAL KIT	COPPER
6	1	S-1001-2022		CAPACITANCE TAP ASSEMBLY	ALUMINUM
5	1	S-1344-0162-1		CAP	ALUMINUM
4	1	S-8680-8035		TUBE ASSEMBLY	ALUMINUM
3	1	S-8680-8034		SHIELD ASSEMBLY	COPPER
2	1	S-8680-8033		FLANGE	ALUMINUM
1	1	S-8680-8032	-001	CASTING, CYCLOALIPHATIC RESIN	EC-APG-02

PARTS LIST					
GENERAL TOLERANCES (UNLESS OTHERWISE SPECIFIED)		REPLACE:		Electro Composites™ solid HV bushings solution	
X.	±0.125				
.X	±0.094			TITLE: SDC® BUSHING 15kV, 400A MODEL: 110-004-T-205-06	
.XX	±0.063			DRAWN BY: J.N.PILOTTE DATE: 2013/09/06	
.XXX	±0.031			CHECK BY:	
ANGLES	±0.25°			PROJECT NO.:	
RADIUS	±0.031			PROJECT MANAGER:	
REMOVE BURRS AND BREAK SHARP EDGES				SCALE: 1:5	
DIMENSIONS ARE IN INCHES (UNLESS OTHERWISE SPECIFIED)				GENERATED BY: SolidWorks 2013 SHEET: 1 of 1	

This drawing is the proprietary property of Electro Composites (2008) ULC, not part of the public domain, and is issued with the express understanding and agreement that it is not to be reproduced or copied in whole or in part or issued for furnishing information to others, or used directly or indirectly, in any way detrimental to the interest of Electro Composites (2008) ULC and is to be returned upon request by Electro Composites (2008) ULC. All Rights Reserved.