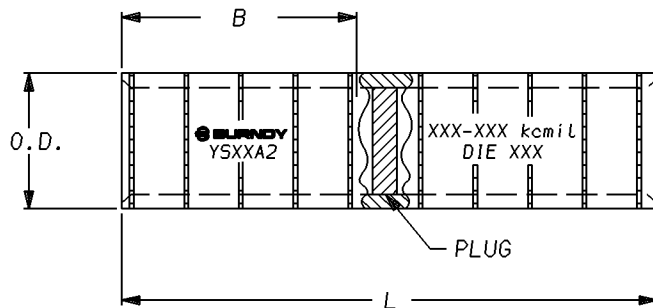


CATALOG NO.	O.D.	B MIN	L MAX	CONDUCTOR SIZE	DIE INDEX NO.	TOOLS, DIESET, CAT NO. & #CRIMPS PER END						REV.	DATE	DESCRIPTION	BY	C'K'D.
						Y35	Y39	*Y45	**Y46	Y48B	Y60BHU	1	2/13/91	SEE REV. REF. PRINT PER (PCN 309).	MP	KH
												2	11/21/91	SEE REV REF PRINT (PCN 621)	JG	RGL
YS32A2	1.19	1.84	3.92	400 kcmil	472	U32ART (4)	U32ART (4)	U32ART (4)	U32ART (4)	C32AR (2)	L32ART (2)					
YS39A2	1.60	2.45	5.20	700-750 kcmil	301	---	---	S39ART (4)	P39ART (4)	C39AR (2)	L39ART (2)					
YS44A2	1.84	2.35	5.00	1000 kcmil	302	---	---	S44ART (4)	P44ART (4)	C44AR (2)	L44ART (2)					
YS45A2	1.84	2.21	4.67	1250 kcmil AAC	302	---	---	S44ART (4)	P44ART (4)	C44AR (2)	L44ART (2)					
YS46A2	2.26	3.16	6.57	1500 kcmil AAC	478	---	---	---	---	C46AR (2)	L46ART (2)					



NOTES:

1. MATERIAL: ALUMINUM
2. FINISH: TIN PLATE
3. BARRELS PARTIALLY FILLED WITH PENETROX AND SEALED.

\* CAT #PT6515 ADAPTER IS REQUIRED TO USE "U" DIES IN Y45 TOOL  
 \*\* CAT #P-UADP ADAPTER IS REQUIRED TO USE "U" DIES IN Y46 TOOL

REFERENCE: FC200954, FD73279  
 FOR PHILADELPHIA ELECTRIC CO.

<b>HYLINK (ALUMINUM)</b>			
CAT NO. YS--A2 TABLE			SCALE
DRAWN ATM 5/20/90		CHECKED K. HENRY 6/26/90	
DES APPROV. G.Z./R.M. 6/27/90		MFG APPROV. _____	
<b>BURNDY</b>		G.C. APPROV. A. LLOYD 6/27/90	
		DRAWING NO.	REV
		SC206139	2
		SHT 1 OF 1	

CAD FILE: SC206139-SHT01