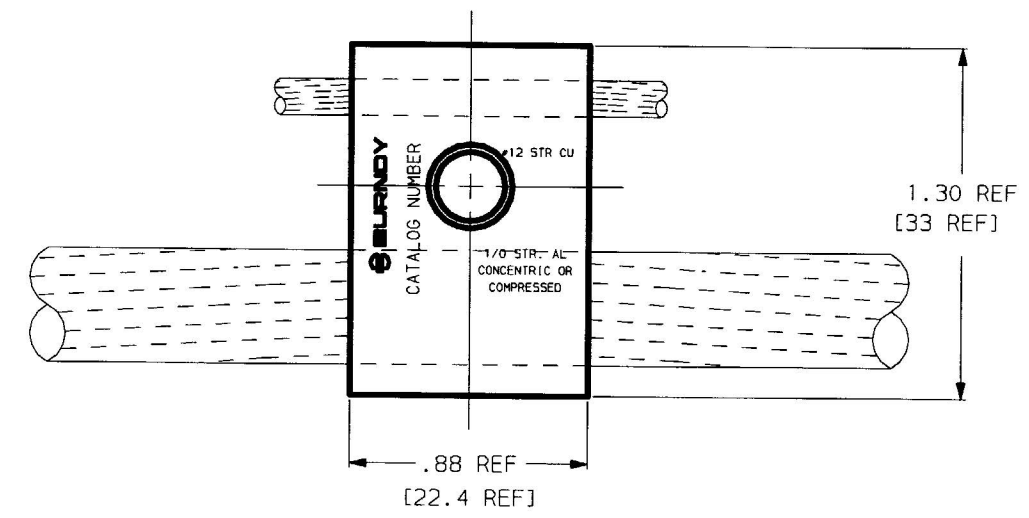
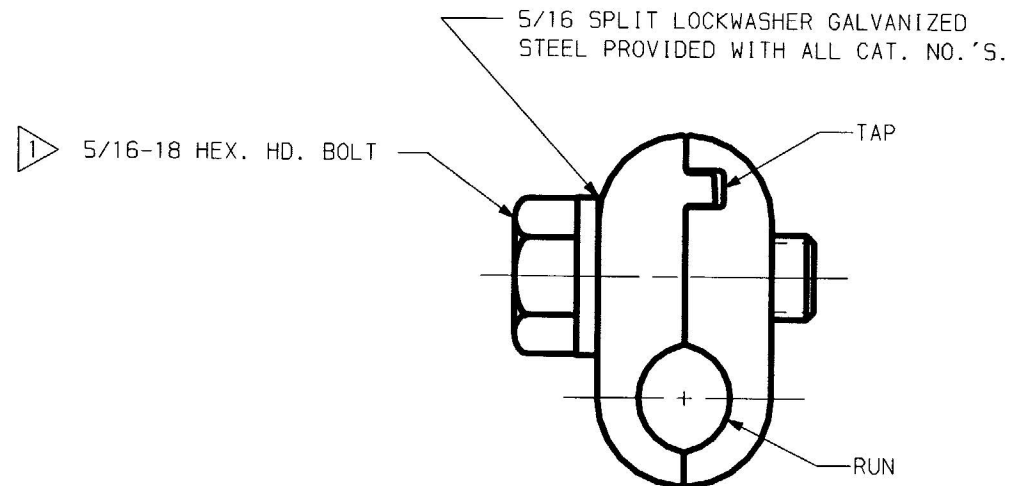


TABLE

CATALOG NO.	BODY MATERIAL DESCRIPTION	HARDWARE DESCRIPTION
UC25A12SLS	ALUMINUM	5/16-18 GALVANIZED STEEL BOLT, 1/2 INCH ACROSS HEAD FLATS
UC25A12SLTNS	ALUMINUM, TIN PLATED	5/16-18 GALVANIZED STEEL BOLT, 1/2 INCH ACROSS HEAD FLATS
UC25A12SLS-1	ALUMINUM	5/16-18 ANODIZED ALUMINUM BOLT, 9/16 INCH ACROSS HEAD FLATS
UC25A12SLTNS-1	ALUMINUM, TIN PLATED	5/16-18 ANODIZED ALUMINUM BOLT, 9/16 INCH ACROSS HEAD FLATS

REV.	DATE	DESCRIPTION	BY	C'K'D.
1	6/28/91	ADDED 5/16-18 ANODIZED AL BOLT, CAT. #'S UC25A12SLS-1 AND UC25A12SLTNS-1 PER PCN (458)	JG	KH
2	12/21/99	CHNG'D NOTE 3 FROM VACUUM PACKED TO INDIVIDUALLY SEALED IN A POLYBAG. (PER ECO 5321)	PL	BM



NOTES:

- 1 SEE TABLE FOR CATALOG DESCRIPTION.
- 2. ALL CATALOG NUMBERS INCLUDE PETROLEUM BASED PENETROX<sup>®</sup> APPLIED ON RUN AND TAP CONDUCTOR GROOVE.
- 3. CATALOG NUMBERS ARE INDIVIDUALLY SEALED IN A POLYBAG.
- 4 RECOMMENDED TIGHTENING TORQUE 180 IN-LBS FOR GALVANIZED STEEL BOLT. FOR ANODIZED ALUMINUM BOLT 140 IN-LBS.
- 5. DIMENSION IN BRACKETS [ ] ARE IN MILLIMETER ROUNDED OFF TO THE NEAREST MILLIMETER, UNLESS OTHERWISE NOTED, AND ARE FOR REFERENCE ONLY.

REF: FD206754

ACCOMMODATES:  
1/0 STR. AL. (.362/.398) - #12 STR. CU.

CLAMP, PARALLEL TAP			
CAT NO. UC25A12SLS, UC25A12SLS-1 UC25A12SLTNS, UC25A12SLTNS-1		SCALE NONE	
DRAWN M PACKER 2/26/91	CHECKED KH 3/4/91		
DES APPROV. J LEFAVOUR 3/5/91	MFG APPROV BK 3/5/91		
Q.C. APPROV. FR 3/5/91		DRAWING NO.	REV
		SC206755	2
		SHT 1	OF 1

CADD FILE: SC206755-01\_2