

DRAWING NO.  
SD210505

4

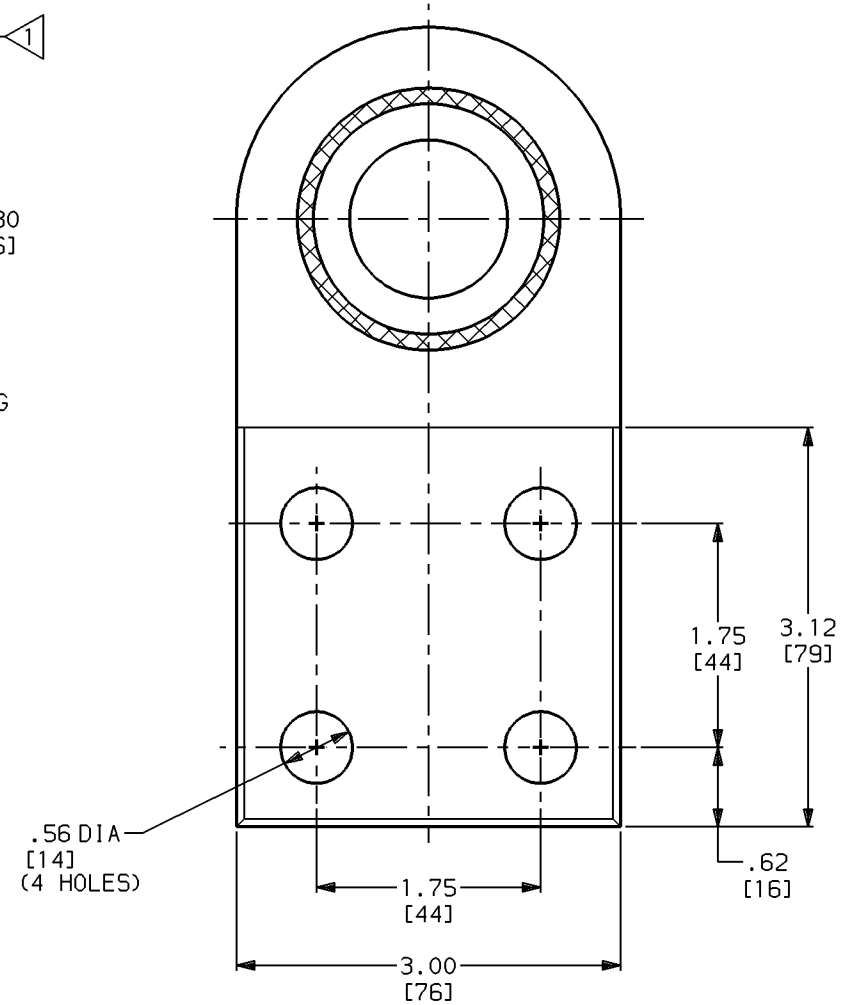
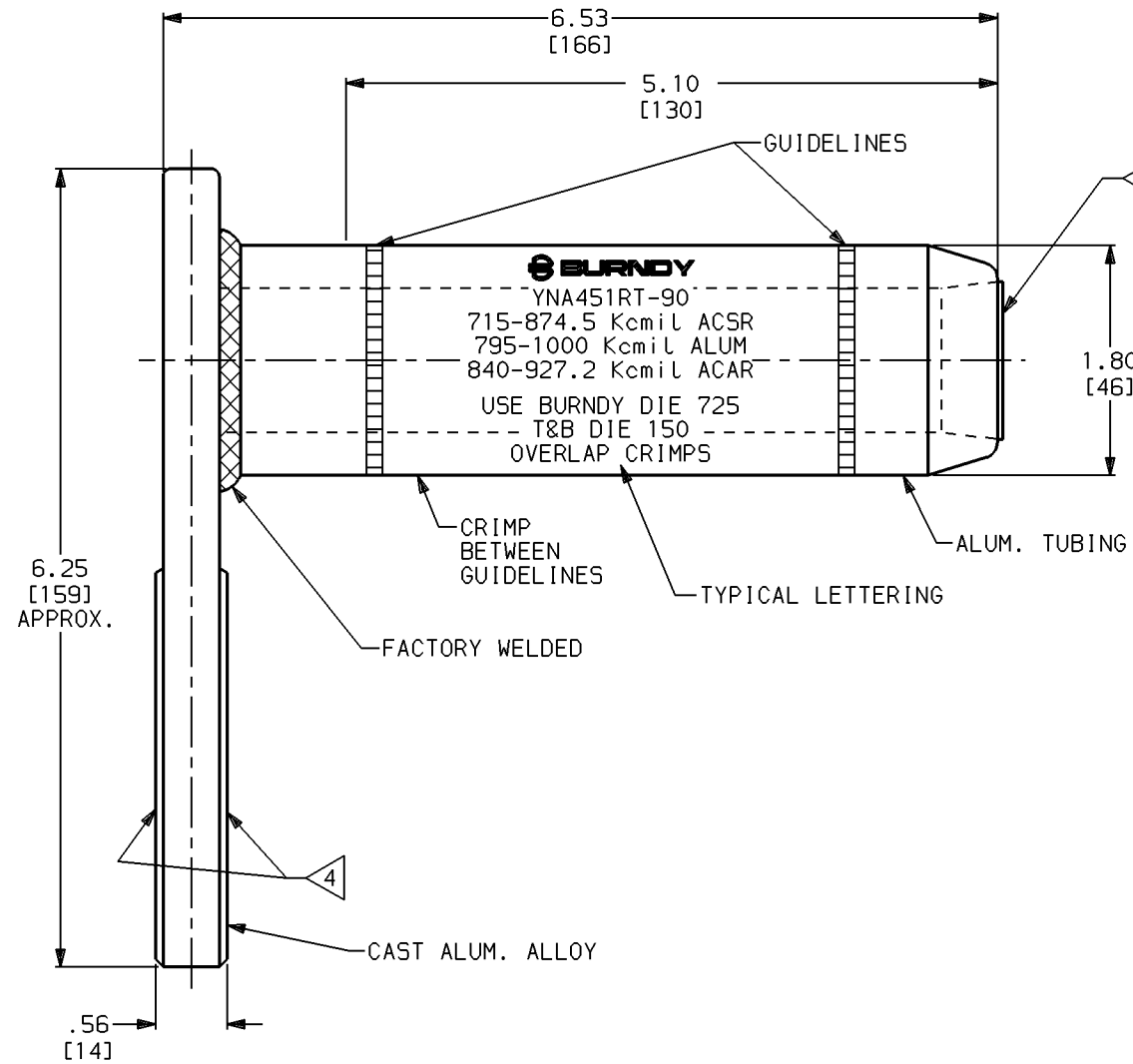
3

2

1

CONDUCTOR	CAT. NO.	INSTALLATION DATA (OVERLAP CRIMPS)						
		BURNDY DIE SET				T&B DIE SET		
		TOOL INDEX NO.	Y35	Y45	Y48	Y60	T&B 21940 TYPE PRESS	
715.5-874.5 Kcmil ACSR. 795-1000 Kcmil ALUM. 840-927.2 Kcmil ACAR.	YNA451RT-90	725	--	S725	C725	L725	150	

REV.	DATE	DESCRIPTION	BY	C'K'D.
0	4/2/96	DRAWING RELEASED	RDP	NSP



NOTES:

- 1 BARREL PARTIALLY FILLED WITH PENETROX™ AND SEALED.
2. DIMENSIONS IN [ ] BRACKETS ARE IN MILLEMMETERS, ROUNDED OFF TO THE NEAREST MILLIMETER, UNLESS OTHERWISE NOTED. METRIC DIMENSIONS ARE FOR REFERENCE ONLY.
- 3 THE EQUIVALENT T&B DIE INDEXES ARE LISTED FOR YOUR CONVENIENCE.
- 4 TONGUE COATED WITH AN OXIDE RETARDANT.
- 5 TO SPECIFY HYLUG INCLUDING HARDWARE ADD SUFFIX 'H' TO CAT. NO. E.G. YNA451RT-90H.
6. EHV CONNECTOR DESIGNED FOR VOLTAGE GREATER THAN 250 KV. FLASH FORMED DURING CRIMPING SHOULD BE REMOVED BY FILING AND SHARP EDGES ROUNDED OFF. THE BARREL PORTION OF THIS CONNECTOR WILL OPERATE QUIETER THAN THE CONDUCTOR AT EXTRA HIGH VOLTAGES.

90° HYLUG			
CAT NO. YNA451RT-90, YNA451RT-90H	SCALE	FULL SIZE	
DRAWN: R PERREAULT	4/1/96	CHECKED: N PRESSMAN	4/2/96
DSGN APPVL: A BRAZEAU	4/2/96	MFG APPVL: N/A	
Q.A. APPVL: D VARIO	4/2/96	MKTG APPVL: R PELLETIER	4/2/96
CAD FILE: SD210505-SHT01	PM REF: N/A	MDL REF: N/A	
PROJECT: D.O. 53605			
DRAWING NO.		REV	
SD210505		0	
SHEET 1 OF 1			

4

3

2

1

REV: 061995