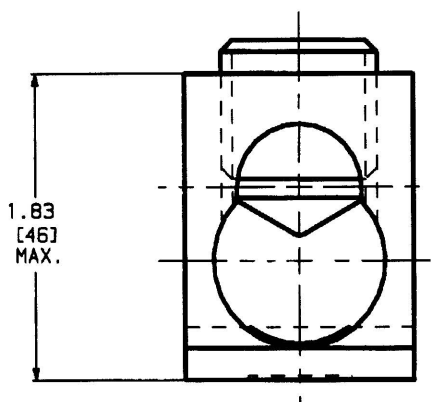
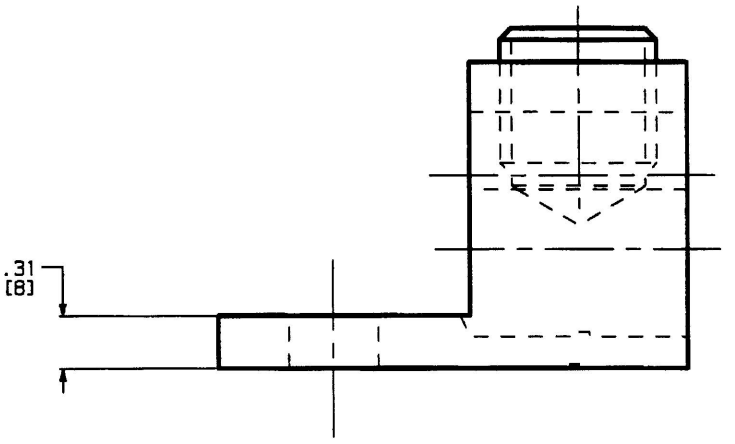
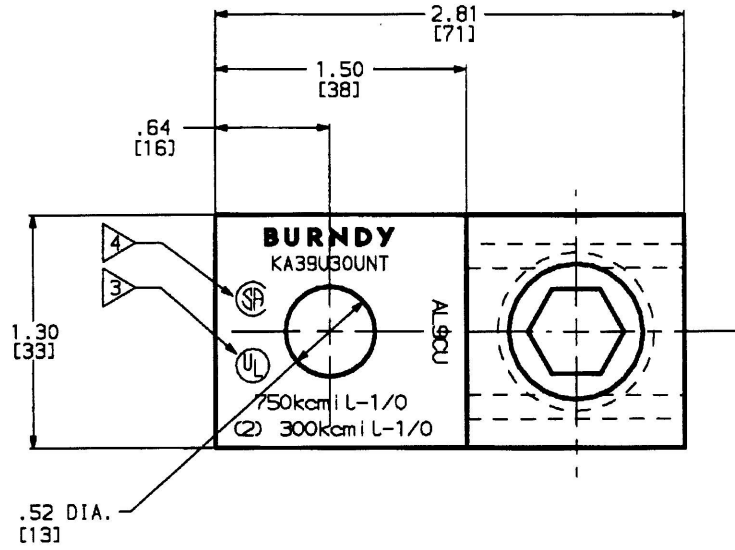


DRAWING NO.
SD212032

REV.	DATE	DESCRIPTION	BY	C.K'D.
0	3/8/99	RELEASE FOR PRODUCTION	BM	JLM
1	3/26/99	CHANGED CORPORATE IDENTIFIER FROM BUE TO BURNDY AND CHANGED TO ALUM PER ECO 486B.	BM	JLM
2	11/3/99	ADDED NEW CAT. # KA39U30UNT & TABLE PER ECO 5249.	BM	PL
3	3/21/00	ADD NEW FORMAT, UPDATE NOTE 5 & ADD NOTE 7, REMOVE TABLE AND MAKE CHANGES ON VIEWS PER ECO 5478.	DB	PL



NOTES:

1. MATERIAL-BODY: ALUMINUM
SCREW: ALUMINUM
2. FINISH-BODY: TIN PLATED
SCREW: TIN PLATED
- 3 CONNECTORS AR UL LISTED TO UL486B FOR INDICATED CONDUCTOR RANGE.
- 4 CONNECTORS ARE CSA CERTIFIED TO C22.2, NO. 65 FOR INDICATED CONDUCTOR RANGE.
5. RECOMMENDED TIGHTENING TORQUE=500 IN. LBS. [57N.M.].
LISTED TORQUE VALUES ARE FOR MAXIMUM CONDUCTOR SIZES ACCOMMODATED.
CONSULT UL486 TABLES 7-4, 7-5, & 7-6 FOR SMALLER CONDUCTOR SIZES.
6. DIMENSIONS IN BRACKETS [] ARE IN MILLIMETERS ROUNDED OFF TO THE NEAREST MILLIMETER, UNLESS OTHERWISE NOTED, AND ARE FOR REFERENCE ONLY.
7. ACCOMMODATES: (1) 1/0 STR - 750 kcmil ALUMINUM OR COPPER OR
(2) 1/0 STR - 300 kcmil ALUMINUM OR COPPER.

TO ORDER BURNDY PRODUCTS CALL 1-800-346-4175
MANCHESTER, NH 03109, USA
FOR PRODUCT INFO = <http://www.fciconnect.com>

UNIVERSAL TERMINAL

CAT NO: KA39U30UNT SCALE: NTS

DRAWN: B.MICHAUD 3/8/99 CHECKED: J.MICHAUD 3/8/99
DSGN APPVL: K.MELLO 3/10/99 MFG APPVL: N/A

G.A. APPVL: J.BRODEUR 3/12/99
MKTG APPVL: R.POIRIER 3/9/99
CAD FILE: SD212032-01_3
MDL REF: N/A

FCI BURNDY PRODUCTS

DRAWING NO. SD212032 REV 3
SHEET 1 OF 1