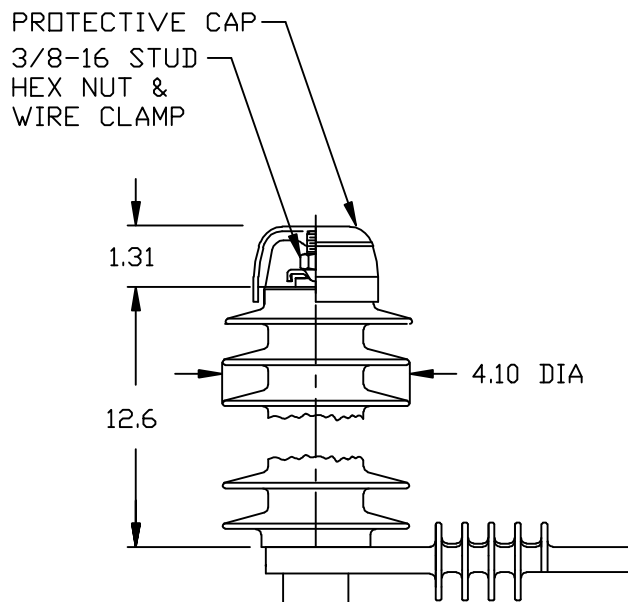



NOTES:

1. DIMENSIONS SUBJECT TO +/- 3% TOLERANCE
2. LEAKAGE DISTANCE (Inches) - 39.6
3. ALTITUDE 0-12000 FT. ABOVE SEA LEVEL
4. WEIGHT OF UNIT INCLUDING HARDWARE - 9.1 LB.
5. MAXIMUM CONTINUOUS LINE-TO-GROUND OPERATING VOLTAGE 22.0 kV MCOV
6. VOLTAGE RATING 27 kV RMS.



.5 μ SEC 10kA IR kV	500 A SWITCHING SURGE IR kV	MAXIMUM 8/20 DISCHARGE VOLTAGE - kV AT				
		1.5 kA	3.0 kA	5 kA	10 kA	20 kA
95.1	63.3	69.2	74	78.4	85.5	97.1

IEEE DISTRIBUTION HEAVY DUTY IEC DISTRIBUTION DH		 POWER SYSTEMS		HUBBELL® POWER SYSTEMS			
		TITLE PDV-100 OPTIMA 22.0 KV MCOV					
	CONFIDENTIAL: THIS DRAWING AND ITS CONTENTS ARE CONFIDENTIAL AND THE EXCLUSIVE PROPERTY OF HUBBELL POWER SYSTEMS. NO PUBLICATION, DISTRIBUTION OR COPIES MAY BE MADE WITHOUT THE WRITTEN CONSENT OF HUBBELL POWER SYSTEMS. HUBBELL POWER SYSTEMS UNPUBLISHED ALL RIGHTS RESERVED UNDER THE COPYRIGHT LAWS.	SIZE	DWG NO.	CAT / PART / ASSY NO.			REV
		S	ALES7XXX	213722-7324			32
REV DATE 07/03/18		DO NOT SCALE THIS DRAWING		DRN BY NON		DATE 06/17/00	SHEET 1 OF 1

REV DATE 07/03/18