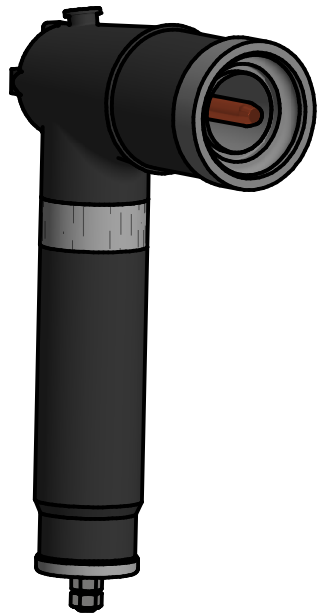


# 25KV CLASS ELBOW ARRESTER

1850 Richmond Ave East  
Aiken, SC 29801  
Phone: 803-648-8386  
[www.Hubbellpowersystems.com](http://www.Hubbellpowersystems.com)



**Insulation Withstand Voltages**

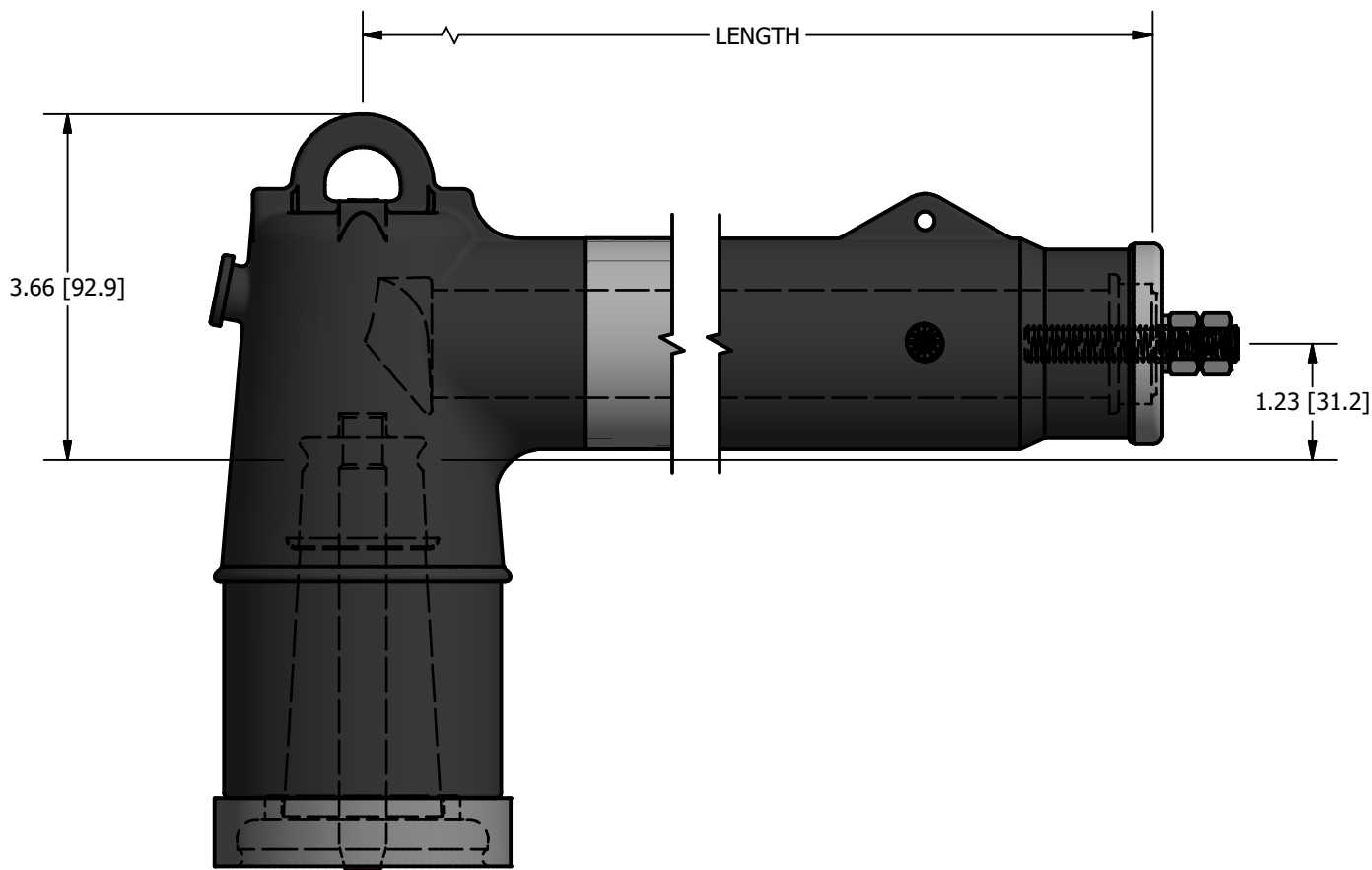
Basic Impulse Level.....125 kV Crest (1.2 x 50  $\mu$ Sec. wave)  
60 Hz (60 Sec.).....45 kV rms  
Partial Discharge Extinction Voltage (5 pC).....21.5 kV rms

**Deadfront Arrester Failure Mode Test**

Hubbell Elbow Arresters meet the requirements of IEEE Std. C62.11 Clause 8.17

**Production Tests**

100% factory tested for Partial Discharge



Catalog #	Duty Cycle (kV)	MCOV (kV)	0.5 $\mu$ sec. 5kA Max IR-kV	Maximum Discharge Voltage (kV Crest) 8x20 $\mu$ sec. Current Wave						Length (In)
				@ 1.5 kA	@ 3 kA	@ 5 kA	@ 10 kA	@ 20 kA	@ 40 kA	
225ELA09	9	7.7	30.0	23.6	25.1	26.8	30.2	34.9	43.6	6.6
225ELA10	10	8.4	33.3	26.3	28	29.8	33.6	38.8	48.5	6.6
225ELA12	12	10.2	39.8	31.5	33.5	35.7	40.2	46.5	58.1	6.6
225ELA15	15	12.7	50.6	39.9	42.5	45.3	51	58.9	73.7	10.2
225ELA18	18	15.3	59.7	47.2	50.3	53.6	60.3	69.7	87.1	10.2
225ELA21	21	17.0	67.2	53.2	56.6	60.3	67.9	78.5	98.1	10.2

<p>CONTENTS ARE CONFIDENTIAL AND THE EXCLUSIVE PROPERTY OF HUBBELL POWER SYSTEMS. NO PUBLICATION, DISTRIBUTION OR COPIES MAY BE MADE WITHOUT THE WRITTEN CONSENT OF HUBBELL POWER SYSTEMS. HUBBELL POWER SYSTEMS UNPUBLISHED ALL RIGHTS RESERVED UNDER THE COPYRIGHT LAWS.</p>				<p>HUBBELL POWER SYSTEMS, Inc.</p>	
		<p>TITLE</p> <p><b>25KV CLASS ELBOW ARRESTER</b></p>			
REV DATE	8/19/2021	SIZE	DWG NO.	CAT / PART / ASSY NO.	REV
		SB	030845-00	228ELA	1
		DO NOT SCALE THIS DRAWING	DRN BY BVB	DATE 4/13/2021	SHEET 1 OF 1