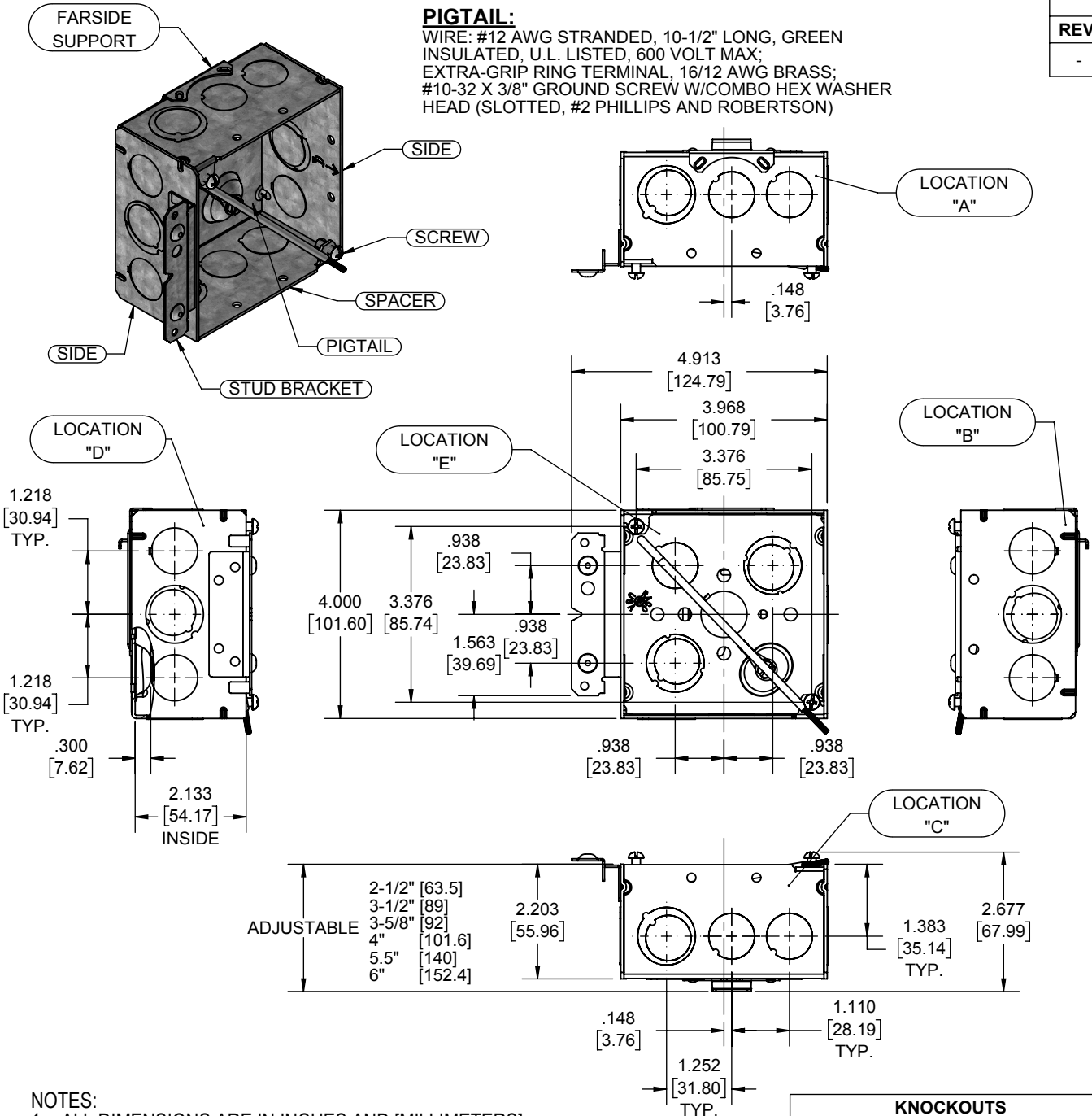


REVISIONS

REV.	DATE	DESCRIPTION	BY:
-	08/08/18	INITIAL RELEASE OF DRAWING	RMV

**PIGTAIL:**

WIRE: #12 AWG STRANDED, 10-1/2" LONG, GREEN INSULATED, U.L. LISTED, 600 VOLT MAX;  
EXTRA-GRIP RING TERMINAL, 16/12 AWG BRASS;  
#10-32 X 3/8" GROUND SCREW W/COMBO HEX WASHER HEAD (SLOTTED, #2 PHILLIPS AND ROBERTSON)



DESCRIPTION	MATERIAL	FINISH
STUD BRACKET	STEEL	GALVANIZED
PIGTAIL	INSULATED STRANDED COPPER	N/A
FARSIDE SUPPORT	STEEL	GALVANIZED
FASTENERS	STEEL	GALVANIZED
SIDE	STEEL	GALVANIZED
SPACER	STEEL	GALVANIZED

LIST OF PARTS

THE DESIGN AND DIMENSIONS OF THE PRODUCT SHOWN ON THIS DRAWING ARE SUBJECT TO CHANGE WITHOUT NOTICE

TITLE:  
**ASSEMBLY 4" SQ x 2-1/8" DEEP BOX WITH FAR SIDE SUPPORT AND FACE MOUNT BRACKET**

KNOCKOUTS		
TRADE SIZE	LOCATION	QTY.
(1/2"-3/4") TKO*	A, B, C, D	1
1/2" KO	A, B, C, D, E	2
(1/2"-3/4") TKO*	E	2

TOLERANCE UNLESS OTHERWISE SPECIFIED  
.XX DECIMAL ± .015  
.XXX DECIMAL ± .005  
ANGLE ± 2°



DRAWN BY:	RMV	SCALE:	SIZE:
APP. BY:	N.S.		
DATE:	08-08-18	1:3	<b>A</b>

- NOTES:
- ALL DIMENSIONS ARE IN INCHES AND [MILLIMETERS]
  - BOX VOLUME: 30.3 IN<sup>3</sup> [496.5 CM<sup>3</sup>]
  - UL LISTED