

LEG DIA) TWO CLAMPING ELEMENTS  
 FOUR-DUPLEX HEX NUTS &  
 BRONZE SHP LW.

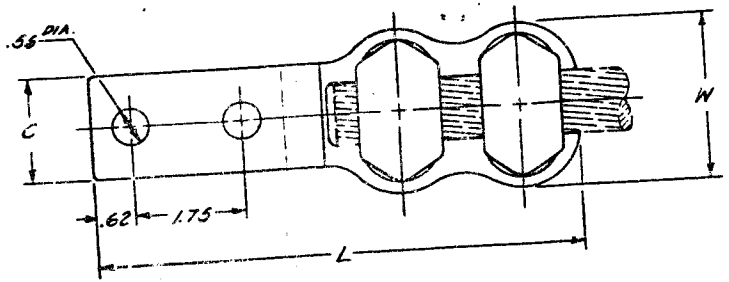
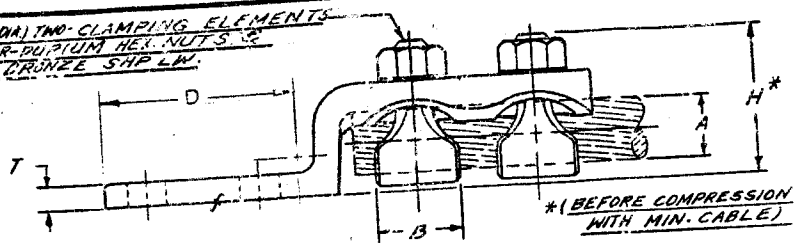


FIG. 1

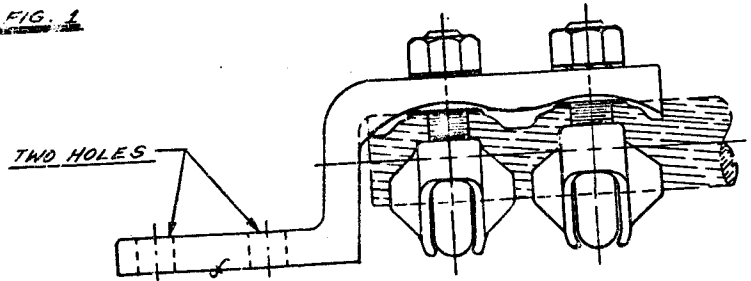


FIG. 2

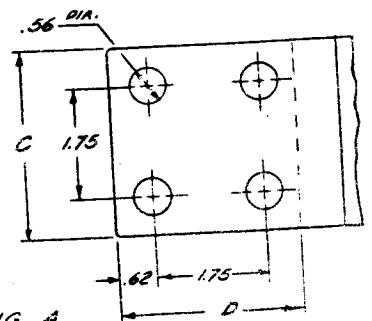
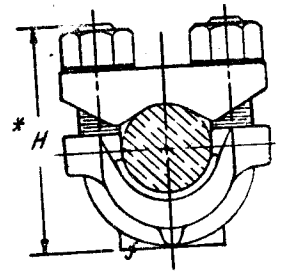


FIG. A

COPPER CONDUCTOR RANGE (A)	CAT. NO.	FIG. NO.	B	C	D	#	H	J	L	T	W	REV. NO.
1/0 STR. (.373) - 4/0 STR. (.528)	VVA28-2N	1	1.09	1.06	3.06	1.88	.375	6.19	.31	1.69	0	
1/0 STR. (.373) - 300 MCM (.630)	VVA30-2N	1	1.09	1.12	3.06	2.19	.438	6.56	.31	1.91	0	
300 MCM (.630) - 500 MCM (.814)	VVA34-2N	1	1.31	1.38	3.06	2.56	.500	6.88	.38	2.22	0	
500 MCM (.814) - 800 MCM (1.031)	VVA40-2N	1	1.34	1.62	3.00	2.88	.562	7.69	.38	2.62	0	
500 MCM (.814) - 800 MCM (1.031)	VVA40-4N	1A	1.34	3.00	3.00	2.88	.562	7.69	.38	2.62	0	
750 MCM (.998) - 1000 MCM (1.152)	VVA44-2N	1	1.41	1.88	3.06	3.06	.625	8.12	.50	2.88	0	
750 MCM (.998) - 1000 MCM (1.152)	VVA44-4N	1A	1.41	3.00	3.00	3.06	.625	8.06	.50	2.88	0	
1000 MCM (1.152) - 1500 MCM (1.412)	VVA46-2N	2	2.00	2.25	3.00	4.00	.625	8.75	.56	3.25	0	
1000 MCM (1.152) - 1500 MCM (1.412)	VVA46-4N	2A	2.00	3.00	3.06	4.00	.625	8.75	.56	3.25	0	
1500 MCM (1.412) - 2000 MCM (1.631)	VVA48-2N	2	2.25	2.62	3.00	4.50	.750	9.25	.62	3.75	0	
1500 MCM (1.412) - 2000 MCM (1.631)	VVA48-4N	2A	2.25	3.00	3.00	4.50	.750	9.25	.62	3.75	0	
1/0 STR. (.373) - 300 MCM (.630)	VVA30-4N	1A	1.09	3.00	3.00	2.19	.438	6.75	.38	1.91	2	



MATERIAL :-  
 CAST COPPER ALLOY 113L

FINISH :-  
 BRIGHT DIPPED

REFERENCE :-  
 FOR VVA - GEN'L DWG. SEE SDB#53

VARI LUGS (NEMA TONGUES)				SCALE	
TYPE VVA-2N & VVA-4N (TABLE)				SCALE	
DRAWN B.K. 12-22-50				CHECKED E.H. 2-51	
DRAWING NO.				REV.	
3	1/22/56	VVA30-4N FIG. 1A WAS FIG. 2A	DC20070	JM	JM
2	1-13-56	VVA 20-4N ADDED	(DD 37040)	CMH	CMH
1	5/17/50	SEE REV. 218 FOR FIG. 1 & 2		NT	
MARK	DATE	REVISION	BY	CHKD	APP'D

**BURNDY**

SC23494 3