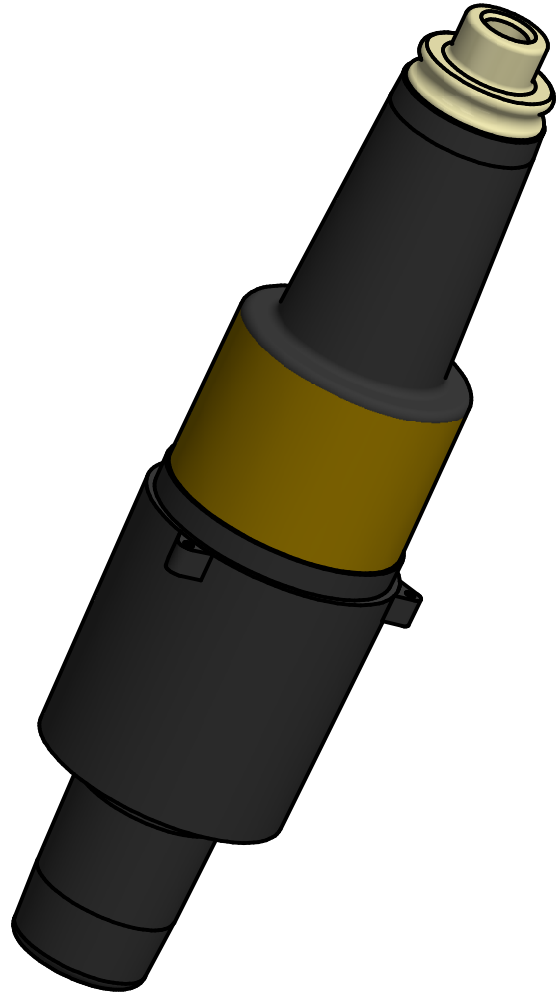


35 kV BUSHING INSERT SMALL INTERFACE



Ratings

Maximum Continuous Voltage.....21.1 kV Phase-to-Ground
36.6 kV Phase-to-Phase
Continuous Current.....200 A

Short-Time Current Ratings

0.17 Sec. Duration.....10,000 A rms Symmetrical
3.00 Sec. Duration.....3,500 A rms Symmetrical

Insulation Withstand Voltages

Basic Impulse Level.....150 kV Crest (1.2 x 50 μ Sec. wave)
60 Hz (60 Sec.).....50 kV rms
Partial Discharge Extinction Voltage (3 pC).....26 kV rms

Switching

1-Phase & 3-Phase Circuits 21.1 kV Phase-to-Ground, 36.6 kV maximum across the open contacts. 10 make/break operations at 200 A with 0.70-0.80 lagging power factor.

Fault Closure

One Fault-Close Operation at max 21.1 kV Phase-to-Ground, or max 36.6 kV Phase-to-Phase; max 10,000 A rms Symmetrical, 10 Cycles (0.17 Sec.).

Production Tests

100% factory tested for Partial Discharge and either AC 60 Hz (50 kV for 60 Sec.) or Impulse (BIL) (150 kV 1.2 x 50 μ Sec. wave).




INTERFACE COMPLIES WITH
IEEE Std. 386 INTERFACE 7B

INTERFACE MATES WITH
IEEE Std. 386 INTERFACE 3

NOTES:

1. DIM: IN(MM)

<p>REV DATE 5/4/2020</p>		<p>CONTENTS ARE CONFIDENTIAL AND THE EXCLUSIVE PROPERTY OF HUBBELL POWER SYSTEMS. NO PUBLICATION, DISTRIBUTION OR COPIES MAY BE MADE WITHOUT THE WRITTEN CONSENT OF HUBBELL POWER SYSTEMS. HUBBELL POWER SYSTEMS UNPUBLISHED ALL RIGHTS RESERVED UNDER THE COPYRIGHT LAWS.</p>		<p> HUBBELL POWER SYSTEMS, Inc.</p>		
				<p>TITLE 200A 35kV BUSHING INSERT SMALL INTERFACE</p>		
<p>SIZE SB</p>		<p>DWG NO.</p>		<p>CAT / PART / ASSY NO. 235BI</p>		<p>REV 0</p>
<p>DO NOT SCALE THIS DRAWING</p>		<p>DRN BY BvB</p>		<p>DATE 5/4/2020</p>		<p>SHEET 1 OF 1</p>