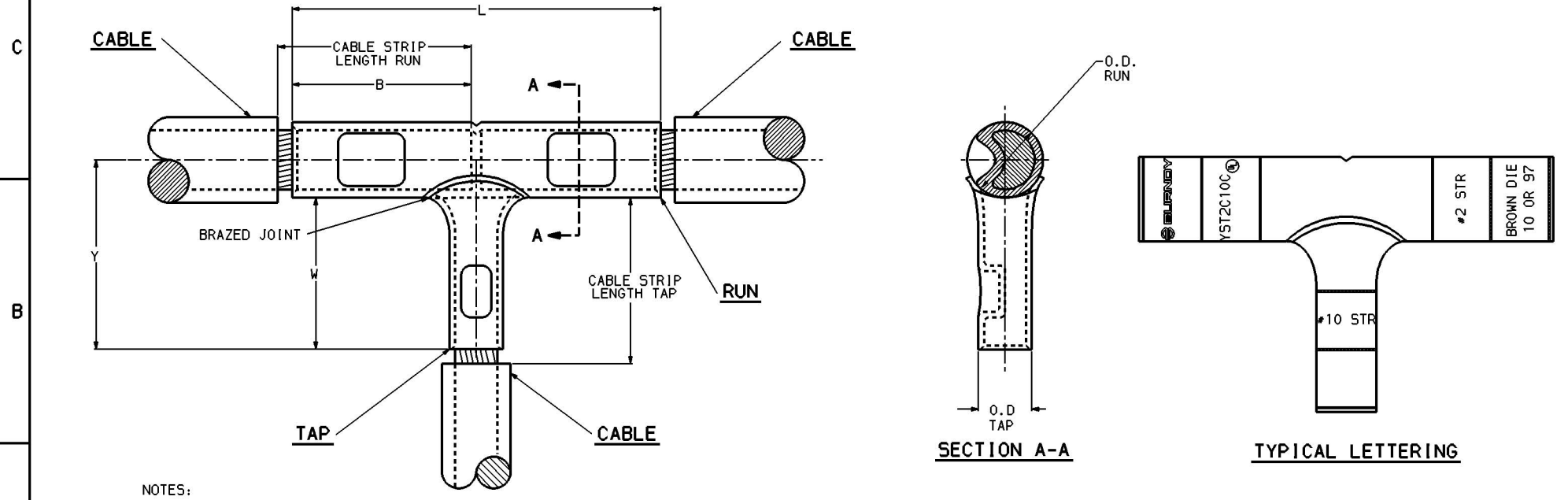


ACCOMMODATES		CATALOG NUMBER	DIMENSIONS						CABLE STRIP LENGTH		INSTALLATION TOOLING						REV.	DATE	DESCRIPTION	BY	C.K'D.
RUN	TAP		B [mm]	L [mm]	W MIN [mm]	Y [mm]	O.D. RUN [mm]	O.D. TAP [mm]	MECHANICAL RUN (mm)	TAP (mm)	DIELESS TOOLS RUN & TAP		RUN Y35 < 4 Y39, Y750, Y46 < 5		TAP Y35 < 4 Y39, Y750, Y46 < 5						
								HYTOOL (CRIMPS)	HYTOOL (CRIMPS)	DIE INDEX	COLOR	DIE NUMBER (# OF CRIMPS)	DIE INDEX	COLOR	DIE NUMBER (# OF CRIMPS)						
#2 STR. (.291 DIA.) [7.4 DIA.]	#10 STR. (.116 DIA.) [2.9 DIA.]	YST2C10C	1.25 [32]	3.38 [86]	1.38 [35]	1.75 [44]	.42 [10.5]	.21 [5.3]	1-5/16 [33]	1-7/16 [36]	MY29-3 (2) MY29-11 (2)	Y644H (1 CRIMP)	10	BROWN	U2CRT (2)	----	----	----			
#2 STR. (.291 DIA.) [7.4 DIA.]	#8 STR. (.146 DIA.) [3.7 DIA.]	YST2C8C	1.25 [32]	3.44 [87]	1.38 [35]	1.60 [41]	.42 [10.5]	.26 [6.6]	1-5/16 [33]	1-7/16 [36]	MY29-3 (2) MY29-11 (2)	Y644H (1 CRIMP)	10	BROWN	U2CRT (2)	49	RED	U8CRT (2)			
#2 STR. (.291 DIA.) [7.4 DIA.]	#6 STR. (.184 DIA.) [4.7 DIA.]	YST2C6C	1.25 [32]	3.44 [87]	1.38 [35]	1.70 [43]	.42 [10.5]	.29 [7.4]	1-5/16 [33]	1-7/16 [36]	MY29-3 (2) MY29-11 (2)	Y644H (1 CRIMP)	10	BROWN	U2CRT (2)	7	BLUE	U5CRT (2)			
#2 STR. (.291 DIA.) [7.4 DIA.]	#4 STR. (.232 DIA.) [5.9 DIA.]	YST2C4C	1.25 [32]	3.50 [89]	1.38 [35]	1.66 [42]	.42 [10.5]	.34 [8.6]	1-5/16 [33]	1-7/16 [36]	MY29-3 (2) MY29-11 (2)	Y644H (1 CRIMP)	10	BROWN	U2CRT (2)	8	GRAY	U4CRT (2)			
#2 STR. (.291 DIA.) [7.4 DIA.]	#2 STR. (.291 DIA.) [7.4 DIA.]	YST2C2C	1.25 [32]	3.56 [90]	1.50 [38]	1.78 [45]	.42 [10.5]	.42 [10.5]	1-5/16 [33]	1-9/16 [40]	MY29-3 (2) MY29-11 (2)	Y644H (1 CRIMP)	10	BROWN	U2CRT (2)	10	BROWN	U2CRT (2)			
#2 STR. (.291 DIA.) [7.4 DIA.]	2/0 STR. (.416 DIA.) [10.6 DIA.]	YST2C26	1.25 [32]	3.71 [94]	1.62 [41]	1.90 [48]	.42 [10.5]	.56 [14]	1-5/16 [33]	1-11/16 [43]	MY29-3 (2) MY29-11 (2)	Y644H (1 CRIMP)	10	BROWN	U2CRT (2)	13	BLACK	U26RT (2)			



- NOTES:
1. MATERIAL: COPPER
  2. FINISH: TIN PLATE
  3. DIMENSIONS IN BRACKETS [ ] ARE IN MILLIMETERS.
  4. THE MAXIMUM CABLE SIZE CRIMPED BY THE Y35 IS 400 Kcmil COPPER.
  5. USE ADAPTOR (CAT NO. P-UADP) WITH "U" DIES IN Y46 HYPRESS.
  6. FOR ADDITIONAL TOOLING, REFERENCE BURNDY CATALOG INSTALLATION TOOL INDEX.
  7. SHOWN INSTALLED WITH NEST AND INDENTOR.

**COUPLER TEE CONNECTOR**

CAT NO. **YST2C - (TABLE)** SCALE: N/A

DRW: J. GARRET 9/22/92 RECD: D. FILLION 9/29/92

DESIGN APPR: C. PALAGI 12/9/92 APPR: N/A

D.A. APPR: A. LLOYD 5/12/93 APPR: D. HAMILTON 4/26/93

CAD FILE: SE23886-SHT05 PH. REF: N/A

**BURNDY** PH. REF: N/A

PROJECT: O. O. 52396

DRAWING NO. **SE23886** REV: 0

SHEET 5 OF 21

REV. 111991