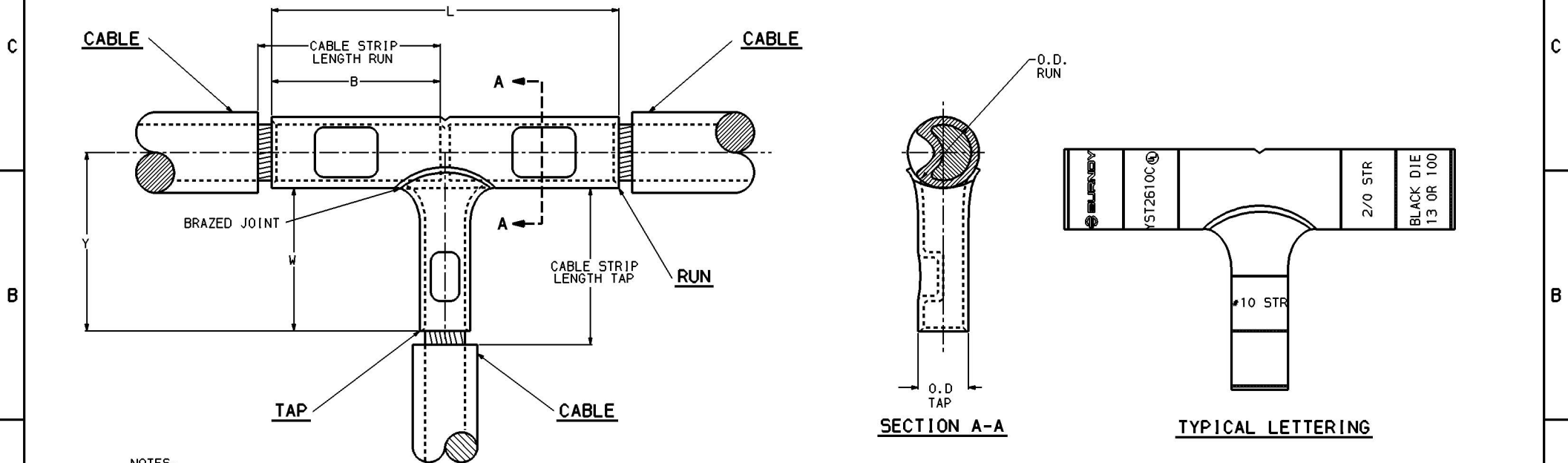


ACCOMMODATES		CATALOG NUMBER	DIMENSIONS						CABLE STRIP LENGTH		INSTALLATION TOOLING						REV.		DATE		DESCRIPTION		BY		C'K'D.					
RUN	TAP		B [mm]	L [mm]	W MIN [mm]	Y [mm]	O.D. RUN [mm]	O.D. TAP [mm]	DIELESS TOOLS RUN & TAP		RUN			TAP			REV.	DATE	DESCRIPTION	BY	C'K'D.									
									MECHANICAL HYTOOL (CRIMPS)	HYDRAULIC HYPRESS	DIE INDEX	COLOR CODE	DIE NUMBER (# OF CRIMPS)	DIE INDEX	COLOR CODE	DIE NUMBER (# OF CRIMPS)														
2/0 STR. (.419 DIA.) [10.6 DIA.]	#10 STR. (.116 DIA.) [2.9 DIA.]	YST2610C	1.50 [38]	3.62 [92]	1.38 [35]	1.94 [49]	.56 [14]	.21 [5.3]	1-9/16 [40]	1-7/16 [36]	MY29-3 (2) HY29-11 (2)	Y644M (1 CRIMP)	13	BLACK	U26RT (2)	----	----	----												
2/0 STR. (.419 DIA.) [10.6 DIA.]	#8 STR. (.146 DIA.) [3.7 DIA.]	YST268C	1.50 [38]	3.69 [94]	1.38 [35]	1.91 [48]	.56 [14]	.26 [6.6]	1-9/16 [40]	1-7/16 [36]	MY29-3 (2) HY29-11 (2)	Y644M (1 CRIMP)	13	BLACK	U26RT (2)	49	RED	U6CRT (2)												
2/0 STR. (.419 DIA.) [10.6 DIA.]	#6 STR. (.184 DIA.) [4.7 DIA.]	YST266C	1.50 [38]	3.69 [94]	1.38 [35]	1.89 [46]	.56 [14]	.29 [7.4]	1-9/16 [40]	1-7/16 [36]	MY29-3 (2) HY29-11 (2)	Y644M (1 CRIMP)	13	BLACK	U26RT (2)	7	BLUE	U5CRT (2)												
2/0 STR. (.419 DIA.) [10.6 DIA.]	#4 STR. (.232 DIA.) [5.9 DIA.]	YST264C	1.50 [38]	3.75 [95]	1.38 [35]	1.86 [47]	.56 [14]	.34 [8.6]	1-9/16 [40]	1-7/16 [36]	MY29-3 (2) HY29-11 (2)	Y644M (1 CRIMP)	13	BLACK	U26RT (2)	8	GRAY	U4CRT (2)												
2/0 STR. (.419 DIA.) [10.6 DIA.]	#2 STR. (.291 DIA.) [7.4 DIA.]	YST262C	1.50 [38]	3.81 [97]	1.50 [38]	1.91 [48]	.56 [14]	.42 [10.5]	1-9/16 [40]	1-9/16 [40]	MY29-3 (2) HY29-11 (2)	Y644M (1 CRIMP)	13	BLACK	U26RT (2)	10	BROWN	U2CRT (2)												
2/0 STR. (.419 DIA.) [10.6 DIA.]	#1 STR. (.330 DIA.) [8.4 DIA.]	YST261C	1.50 [38]	3.88 [98]	1.56 [40]	1.91 [48]	.56 [14]	.46 [11.7]	1-9/16 [40]	1-5/8 [41]	MY29-3 (2) HY29-11 (2)	Y644M (1 CRIMP)	13	BLACK	U26RT (2)	11	GREEN	U1CRT (2)												
2/0 STR. (.419 DIA.) [10.6 DIA.]	1/0 STR. (.373 DIA.) [9.5 DIA.]	YST2625	1.50 [38]	3.94 [100]	1.56 [40]	1.91 [48]	.56 [14]	.51 [13]	1-9/16 [40]	1-5/8 [41]	MY29-3 (2) HY29-11 (2)	Y644M (1 CRIMP)	13	BLACK	U26RT (2)	12	PINK	U25RT (2)												
2/0 STR. (.419 DIA.) [10.6 DIA.]	2/0 STR. (.419 DIA.) [10.6 DIA.]	YST2626	1.50 [38]	3.94 [100]	1.62 [41]	1.97 [50]	.56 [14]	.56 [14]	1-9/16 [40]	1-11/16 [43]	MY29-3 (2) HY29-11 (2)	Y644M (1 CRIMP)	13	BLACK	U26RT (2)	13	BLACK	U26RT (2)												



- NOTES:
1. MATERIAL: COPPER
  2. FINISH: TIN PLATE
  3. DIMENSIONS IN BRACKETS [ ] ARE IN MILLIMETERS.
  4. THE MAXIMUM CABLE SIZE CRIMPED BY THE Y35 IS 400 Kcmil COPPER.
  5. USE ADAPTOR (CAT NO. P-UADP) WITH "U" DIES IN Y46 HYPRESS.
  6. FOR ADDITIONAL TOOLING, REFERENCE BURNDY CATALOG INSTALLATION TOOL INDEX.
  7. SHOWN INSTALLED WITH NEST AND INDENTOR.

COUPLER TEE CONNECTOR			
DWG NO. YST26-(TABLE)	SCALE N/A	DATE 9/22/92	CHECKED BY D FILLION
DESIGNED BY J GAUDET	DATE 12/9/92	APP'D BY N/A	DATE 4/26/93
DRAWN BY C PALMISTO	DATE 5/12/93	APP'D BY D HAMILTON	DATE 4/26/93
CAD FILE: SE23886-SHT08	PH REF: N/A	REL REF: N/A	PROJECT: D. O. 52386
		DRAWING NO. <b>SE23886</b>	REV. <b>0</b>
		SHEET 8 of 21	

REV. 111931