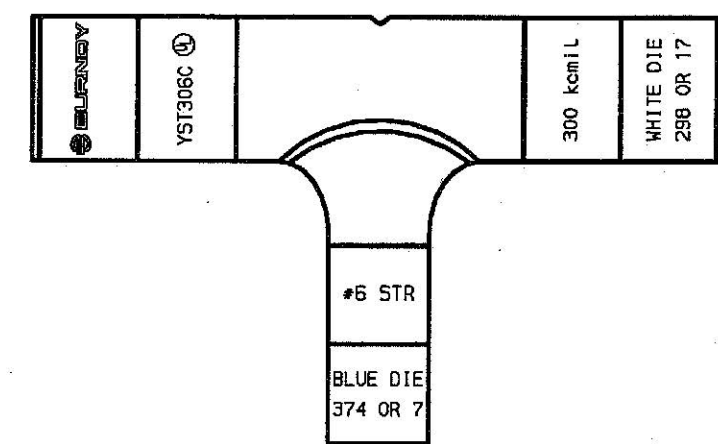
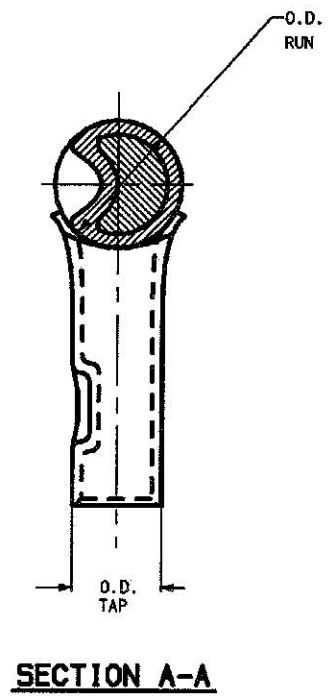
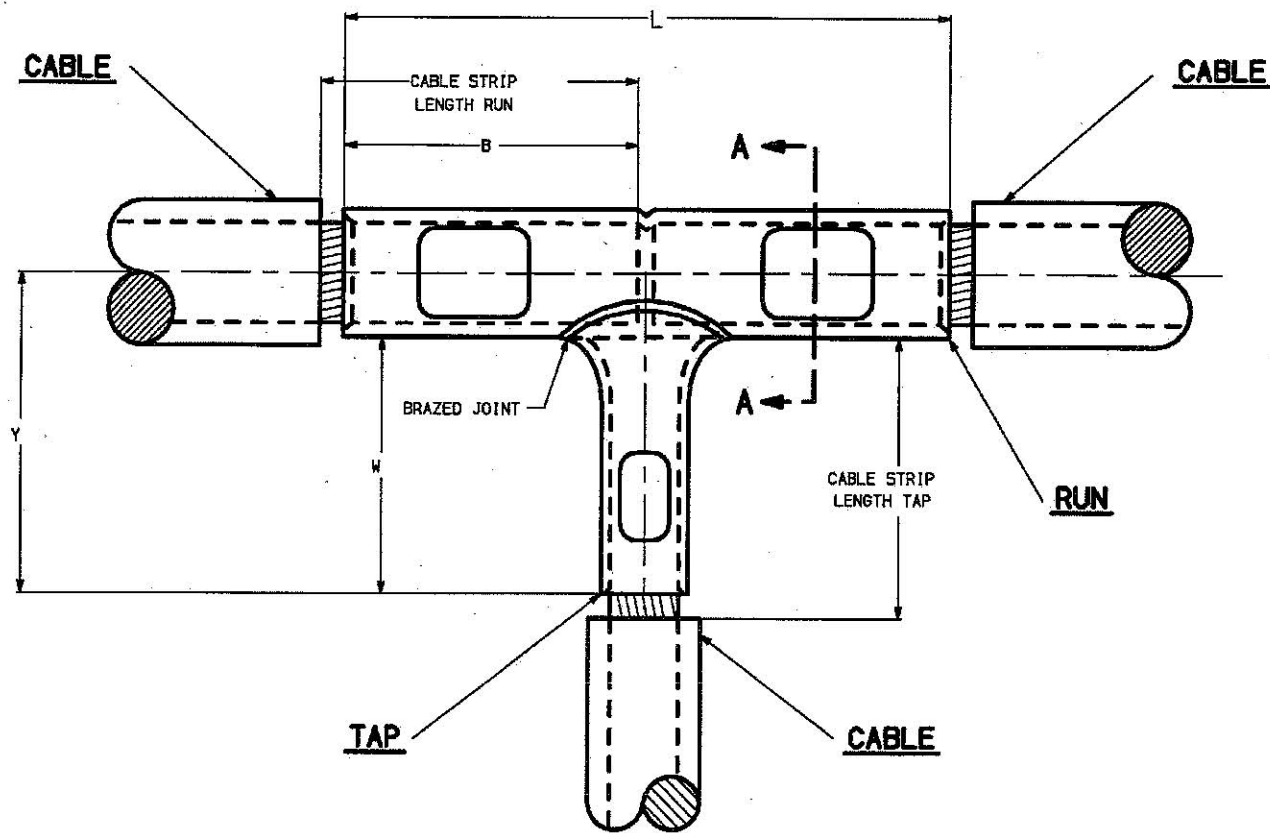


DRAWING NO.  
SE23886

CATALOG NUMBER	ACCOMMODATES		DIMENSIONS						CABLE STRIP LENGTH		INSTALLATION TOOLING						REV.	DATE	DESCRIPTION	ECO	BY	C'K'D.		
	RUN	TAP	B [mm]	L [mm]	W MIN [mm]	Y [mm]	O.D. RUN [mm]	O.D. TAP [mm]	RUN RUN [mm]	TAP TAP [mm]	DIELESS TOOLS RUN & TAP		RUN		TAP									
											MECHANICAL HYTOOL (CRIMPS)	HYDRAULIC HYPRESS	DIE INDEX	COLOR CODE	DIE NUMBER (# OF CRIMPS)	DIE INDEX							COLOR CODE	DIE NUMBER (# OF CRIMPS)
YST306C	300 kcmil (.630 DIA.) [16 DIA.]	#6 STR. (.184 DIA.) [4.7 DIA.]	2.00 [51]	4.94 [125]	1.38 [35]	2.14 [54]	.81 [20]	.29 [7.4]	2-1/16 [52]	1-7/16 [36]	MY29-3 (2) MY29-11 (2)	Y644M (1 CRIMP)	17	WHITE	U30RT (4)	7	BLUE	U5CRT (2)	A	9/28/01	ADDED CAT. # YST3031 TO TABLE	6868	PL	DB
YST304C	300 kcmil (.630 DIA.) [16 DIA.]	#4 STR. (.232 DIA.) [5.9 DIA.]	2.00 [51]	5.00 [127]	1.38 [35]	2.11 [54]	.81 [20]	.34 [8.6]	2-1/16 [52]	1-7/16 [36]	MY29-3 (2) MY29-11 (2)	Y644M (1 CRIMP)	17	WHITE	U30RT (4)	8	GRAY	U4CRT (2)						
YST302C	300 kcmil (.630 DIA.) [16 DIA.]	#2 STR. (.291 DIA.) [7.4 DIA.]	2.00 [51]	5.06 [128]	1.50 [38]	2.22 [56]	.81 [20]	.42 [10.5]	2-1/16 [52]	1-9/16 [40]	MY29-3 (2) MY29-11 (2)	Y644M (1 CRIMP)	17	WHITE	U30RT (4)	10	BROWN	U2CRT (2)						
YST301C	300 kcmil (.630 DIA.) [16 DIA.]	#1 STR. (.330 DIA.) [8.4 DIA.]	2.00 [51]	5.88 [149]	1.55 [40]	2.25 [57]	.81 [20]	.46 [12]	2-1/16 [52]	1-5/8 [41]	MY29-3 (2) MY29-11 (2)	Y644M (1 CRIMP)	17	WHITE	U30RT (4)	11	GREEN	U1CRT (2)						
YST3025	300 kcmil (.630 DIA.) [16 DIA.]	1/0 STR. (.373 DIA.) [9.5 DIA.]	2.00 [51]	5.19 [132]	1.56 [40]	2.22 [56]	.81 [20]	.51 [13]	2-1/16 [52]	1-5/8 [41]	MY29-3 (2) MY29-11 (2)	Y644M (1 CRIMP)	17	WHITE	U30RT (4)	12	PINK	U25RT (2)						
YST3026	300 kcmil (.630 DIA.) [16 DIA.]	2/0 STR. (.419 DIA.) [10.6 DIA.]	2.00 [51]	5.19 [132]	1.62 [41]	2.25 [57]	.81 [20]	.56 [14]	2-1/16 [52]	1-11/16 [49]	MY29-3 (2) MY29-11 (2)	Y644M (1 CRIMP)	17	WHITE	U30RT (4)	13	BLACK	U26RT (2)						
YST3028	300 kcmil (.630 DIA.) [16 DIA.]	4/0 STR. (.528 DIA.) [13 DIA.]	2.00 [51]	5.31 [135]	1.75 [44]	2.22 [56]	.81 [20]	.69 [18]	2-1/16 [52]	1-13/16 [46]	MY29-3 (2) MY29-11 (2)	Y644M (1 CRIMP)	17	WHITE	U30RT (4)	15	PURPLE	U28RT (2)						
YST3029	300 kcmil (.630 DIA.) [16 DIA.]	250 kcmil (.575 DIA.) [15 DIA.]	2.00 [51]	5.38 [137]	1.78 [45]	2.25 [57]	.81 [20]	.75 [19]	2-1/16 [52]	1-7/8 [48]	MY29-3 (2) MY29-11 (2)	Y644M (1 CRIMP)	17	WHITE	U30RT (4)	16	YELLOW	U29RT (2)						
YST3030	300 kcmil (.630 DIA.) [16 DIA.]	300 kcmil (.630 DIA.) [16 DIA.]	2.00 [51]	5.44 [138]	2.25 [57]	2.72 [69]	.81 [20]	.81 [20]	2-1/16 [52]	2-5/16 [59]	-----	Y644M (1 CRIMP)	17	WHITE	U30RT (4)	17	WHITE	U30RT (4)						
YST3031	300 kcmil (.630 DIA.) [16 DIA.]	350 kcmil (.681 DIA.) [17 DIA.]	2.00 [51]	5.50 [140]	2.25 [57]	2.72 [69]	.81 [20]	.88 [22]	2-1/16 [52]	2-5/16 [59]	-----	Y644M (1 CRIMP)	17	WHITE	U30RT (4)	18	RED	U31RT (4)						



- NOTES:
1. MATERIAL: COPPER
  2. FINISH: TIN PLATE
  3. DIMENSIONS IN BRACKETS [ ] ARE IN MILLIMETERS.
  4. THE MAXIMUM CABLE SIZE CRIMPED BY THE Y35 IS 400 kcmil COPPER.
  5. USE ADAPTOR (CAT NO. P-UADP) WITH "U" DIES IN Y45 HYPRESS™
  6. FOR ADDITIONAL TOOLING, REFERENCE BURNDY CATALOG INSTALLATION TOOL INDEX.
  7. SHOWN INSTALLED WITH NEST AND INDENTOR.

TO ORDER BURNDY PRODUCTS CALL 1-800-346-4175  
MANCHESTER, NH 03109, USA  
FOR PRODUCT INFO = <http://www.fciconnect.com>

**COUPLER TEE CONNECTOR**

CAT NO: YST30- (TABLE) SCALE: NTS

DRAWN: J GAUDET 9/22/92 CHECKED: D FILLIGN 9/12/92

DSGN APPVL: C PALAGI 12/9/92 MFG APPVL: N/A

G.A. APPVL: A LLOYD 5/12/93  
MKTG APPVL: D HAMILTON 4/26/93  
CAD FILE: SE23886-12\_A  
MDL REF: N/A

**BURNDY**

DRAWING NO. SE23886 REV A

SHEET 12 OF 21

REV. 012000