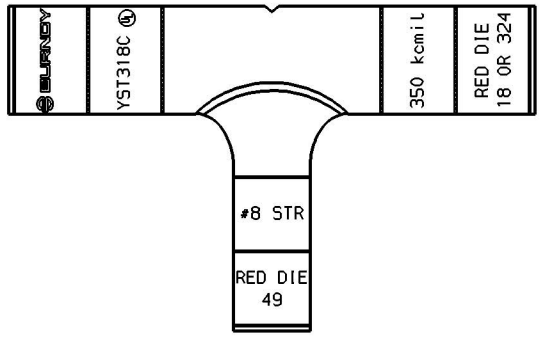
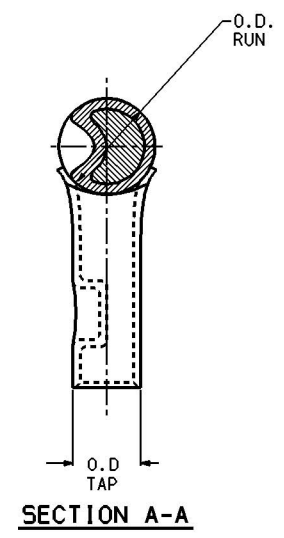
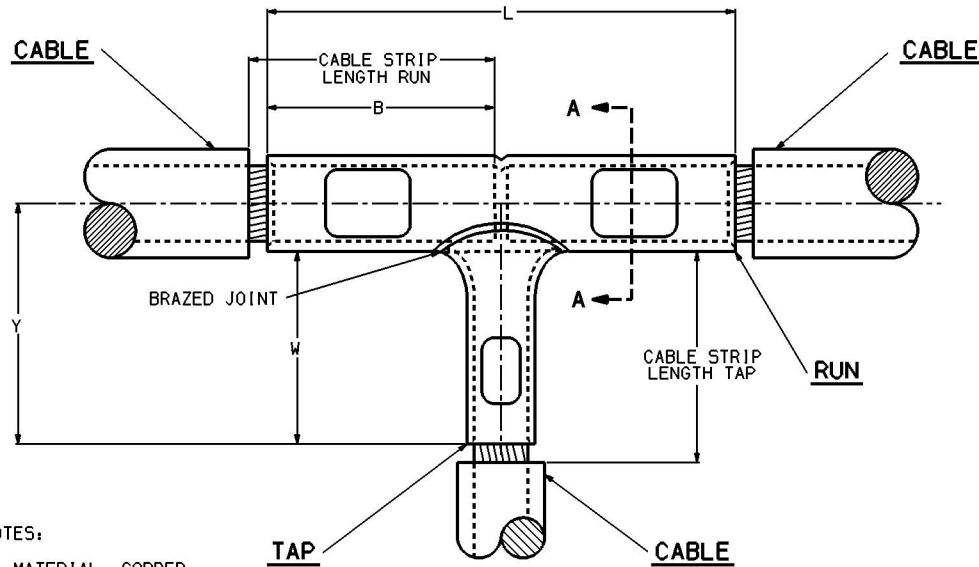


ACCOMMODATES		CATALOG NUMBER	DIMENSIONS					CABLE STRIP LENGTH		INSTALLATION TOOLING						REV.	DATE	DESCRIPTION	BY	C'K'D.				
RUN	TAP		DIELESS TOOLS RUN & TAP		RUN		TAP		MECHANICAL HYTOOL (CRIMP)		HYDRAULIC HYPRESS		DIE INDEX		COLOR CODE		DIE NUMBER (# OF CRIMPS)		DIE INDEX		COLOR CODE		DIE NUMBER (# OF CRIMPS)	
			B [mm]	L [mm]	W MIN [mm]	Y [mm]	O.D. RUN	O.D. TAP	RUN RUN [mm]	TAP TAP [mm]	Y35 <4	Y39, Y750, Y46 <5	Y35 <4	Y39, Y750, Y46 <5	DIE INDEX	COLOR CODE	DIE NUMBER (# OF CRIMPS)	DIE INDEX	COLOR CODE	DIE NUMBER (# OF CRIMPS)	DIE INDEX	COLOR CODE	DIE NUMBER (# OF CRIMPS)	DIE INDEX
350 Kcmil (.681 DIA.) [17 DIA.]	#8 STR. (.146 DIA.) [5.7 DIA.]	YST318C	2.00 [51]	4.94 [125]	1.38 [35]	? [?]	.88 [22]	.26 [6.6]	2-1/16 [52]	1-7/16 [36]	MY29-3 (2) MY29-11 (2)	Y644M (1 CRIMP)	18	RED	U31RT (4)	49	RED	UBCRT (2)						
350 Kcmil (.681 DIA.) [17 DIA.]	#6 STR. (.184 DIA.) [4.7 DIA.]	YST316C	2.00 [51]	4.94 [125]	1.38 [35]	2.20 [56]	.88 [22]	.29 [7.4]	2-1/16 [52]	1-7/16 [36]	MY29-3 (2) MY29-11 (2)	Y644M (1 CRIMP)	18	RED	U31RT (4)	7	BLUE	USCRT (2)						
350 Kcmil (.681 DIA.) [17 DIA.]	#5 STR. (.206 DIA.) [5.2 DIA.]	YST315C	2.00 [51]	5.00 [127]	1.38 [35]	? [?]	.88 [22]	.30 [7.6]	2-1/16 [52]	1-7/16 [36]	MY29-3 (2) MY29-11 (2)	Y644M (1 CRIMP)	18	RED	U31RT (4)	7	BLUE	USCRT (2)						
350 Kcmil (.681 DIA.) [17 DIA.]	#4 STR. (.232 DIA.) [5.9 DIA.]	YST314C	2.00 [51]	5.00 [127]	1.38 [35]	2.19 [56]	.88 [22]	.34 [8.6]	2-1/16 [52]	1-7/16 [36]	MY29-3 (2) MY29-11 (2)	Y644M (1 CRIMP)	18	RED	U31RT (4)	8	GRAY	U4CRT (2)						
350 Kcmil (.681 DIA.) [17 DIA.]	#3 STR. (.261 DIA.) [6.6 DIA.]	YST313C	2.00 [51]	5.06 [129]	1.50 [38]	? [?]	.88 [22]	.38 [9.5]	2-1/16 [52]	1-9/16 [40]	MY29-3 (2) MY29-11 (2)	Y644M (1 CRIMP)	18	RED	U31RT (4)	9	WHITE	U3CRT (2)						
350 Kcmil (.681 DIA.) [17 DIA.]	#2 STR. (.291 DIA.) [7.4 DIA.]	YST312C	2.00 [51]	5.06 [129]	1.50 [38]	2.30 [58]	.88 [22]	.42 [10.5]	2-1/16 [52]	1-3/16 [38]	MY29-3 (2) MY29-11 (2)	Y644M (1 CRIMP)	18	RED	U31RT (4)	10	BROWN	U2CRT (2)						
350 Kcmil (.681 DIA.) [17 DIA.]	#1 STR. (.330 DIA.) [8.4 DIA.]	YST311C	2.00 [51]	5.12 [130]	1.56 [40]	2.33 [59]	.88 [22]	.46 [11.7]	2-1/16 [52]	1-5/8 [41]	MY29-3 (2) MY29-11 (2)	Y644M (1 CRIMP)	18	RED	U31RT (4)	11	GREEN	U1CRT (2)						
350 Kcmil (.681 DIA.) [17 DIA.]	1/0 STR. (.373 DIA.) [9.5 DIA.]	YST3125	2.00 [51]	5.19 [132]	1.56 [40]	2.31 [59]	.88 [22]	.51 [13]	2-1/16 [52]	1-5/8 [41]	MY29-3 (2) MY29-11 (2)	Y644M (1 CRIMP)	18	RED	U31RT (4)	12	PINK	U25RT (2)						
350 Kcmil (.681 DIA.) [17 DIA.]	2/0 STR. (.419 DIA.) [10.6 DIA.]	YST3126	2.00 [51]	5.19 [132]	1.62 [41]	2.34 [59]	.88 [22]	.56 [14]	2-1/16 [52]	1-11/16 [43]	MY29-3 (2) MY29-11 (2)	Y644M (1 CRIMP)	18	RED	U31RT (4)	13	BLACK	U26RT (2)						
350 Kcmil (.681 DIA.) [17 DIA.]	3/0 STR. (.470 DIA.) [12 DIA.]	YST3127	2.00 [51]	5.31 [135]	1.69 [42]	? [?]	.88 [22]	.62 [15.5]	2-1/16 [52]	1-3/4 [44]	MY29-3 (2) MY29-11 (2)	Y644M (1 CRIMP)	18	RED	U31RT (4)	14	ORANGE	U27RT (2)						
350 Kcmil (.681 DIA.) [17 DIA.]	4/0 STR. (.528 DIA.) [13 DIA.]	YST3128	2.00 [51]	5.31 [135]	1.75 [44]	2.34 [59]	.88 [22]	.69 [17.5]	2-1/16 [52]	1-13/16 [46]	MY29-3 (2) MY29-11 (2)	Y644M (1 CRIMP)	18	RED	U31RT (4)	15	PURPLE	U28RT (2)						
350 Kcmil (.681 DIA.) [17 DIA.]	250 Kcmil (.575 DIA.) [15 DIA.]	YST3129	1.63 [41]	5.38 [137]	1.78 [45]	2.28 [58]	.88 [22]	.75 [19]	2-1/16 [52]	1-11/16 [43]	MY29-3 (2) MY29-11 (2)	Y644M (1 CRIMP)	18	RED	U31RT (4)	16	YELLOW	U29RT (2)						
350 Kcmil (.681 DIA.) [17 DIA.]	300 Kcmil (.630 DIA.) [16 DIA.]	YST3130	2.00 [51]	5.44 [138]	2.25 [57]	2.75 [70]	.88 [22]	.81 [20]	2-1/16 [52]	2-5/16 [59]	-----	Y644M (1 CRIMP)	18	RED	U31RT (4)	17	WHITE	U30RT (4)						
350 Kcmil (.681 DIA.) [17 DIA.]	350 Kcmil (.681 DIA.) [17 DIA.]	YST3131	2.00 [51]	5.50 [140]	2.25 [57]	2.75 [70]	.88 [22]	.88 [22]	2-1/16 [52]	2-5/16 [59]	-----	Y644M (1 CRIMP)	18	RED	U31RT (4)	18	RED	U31RT (4)						



- NOTES:
1. MATERIAL: COPPER
  2. FINISH: TIN PLATE
  3. DIMENSIONS IN BRACKETS [ ] ARE IN MILLIMETERS.
  4. THE MAXIMUM CABLE SIZE CRIMPED BY THE Y35 IS 400 Kcmil COPPER.
  5. USE ADAPTOR (CAT NO. P-UADP) WITH "U" DIES IN Y46 HYPRESS.
  6. FOR ADDITIONAL TOOLING, REFERENCE BURNDY CATALOG INSTALLATION TOOL INDEX.
  7. SHOWN INSTALLED WITH NEST AND INDENTOR.

**COUPLER TEE CONNECTOR**

CAT NO: **YST31 - (TABLE)** SCALE: N/A

DRAWN: J GAUDET 9/22/92 CHECKED: D FILLION 9/29/92

DESIGN APPR.: C PALAGI 12/9/92 MFG APPR.: N/A

D.A. APPR.: A LLOYD 5/12/93 MFG APPR.: D HAMILTON 4/26/93

CAD FILE: SE23886-SHT13 P1 REF: N/A

PROJECT: D. OS2396

REV: 0

**BURNDY PRODUCTS**

SE23886

SHEET 13 of 21

REV. 11/1991