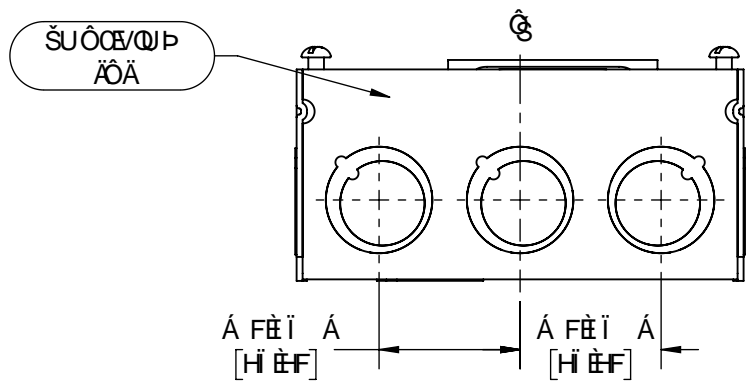
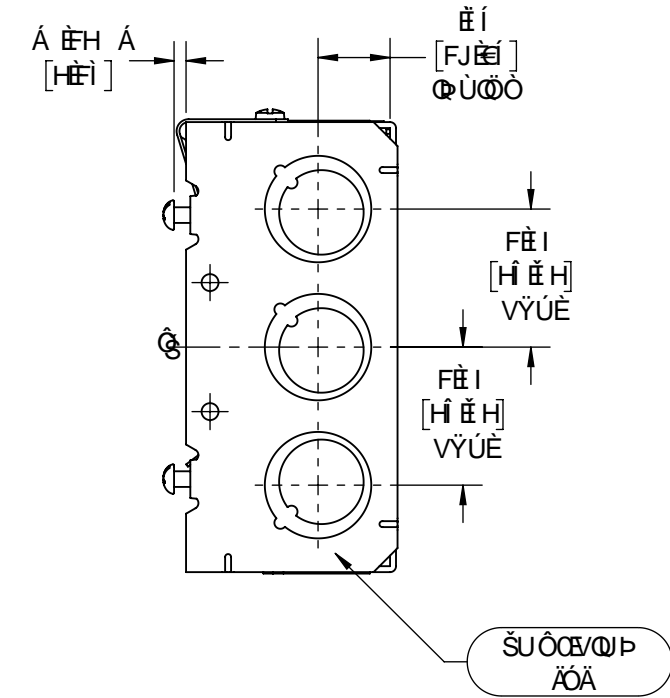
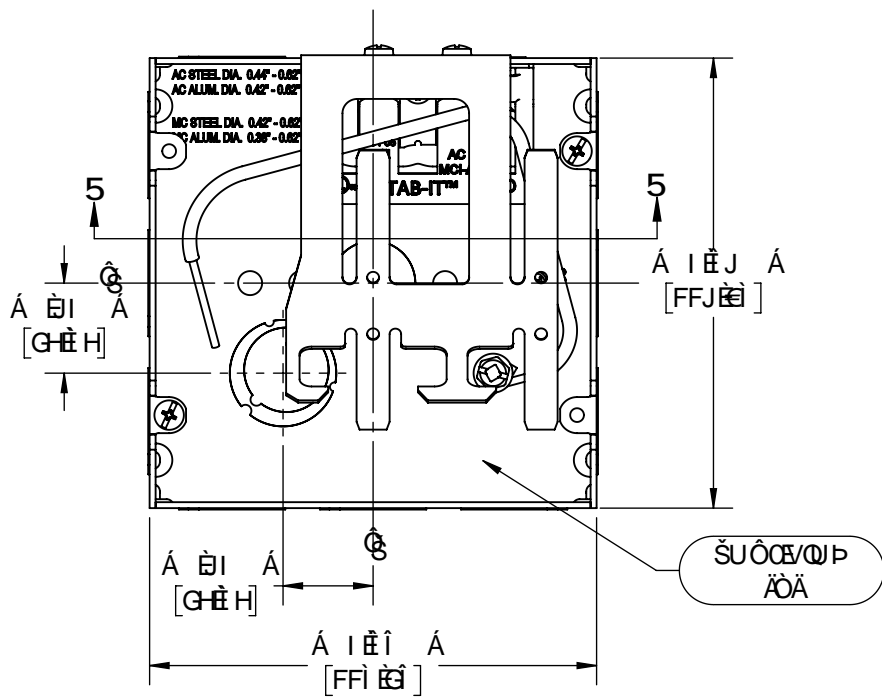
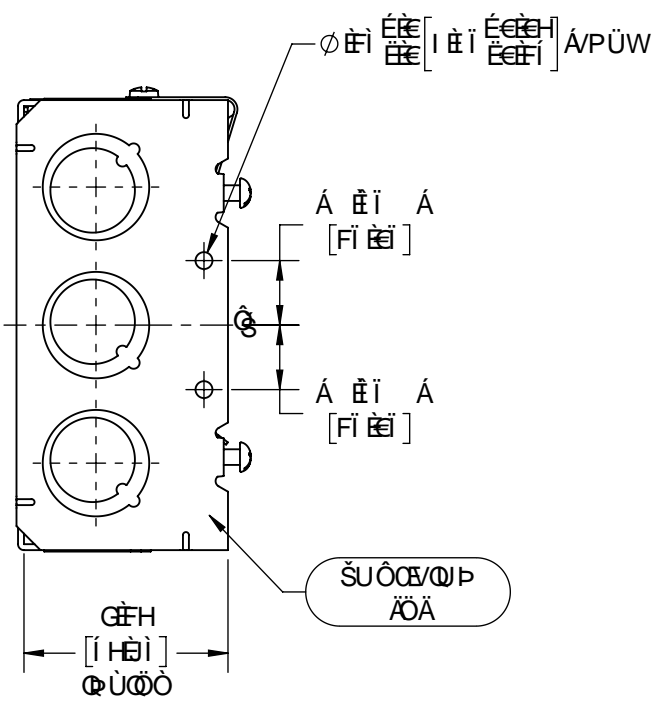


GDÄ ÈGÄ FBAVÜŠUÓÄÜÖÜY Á



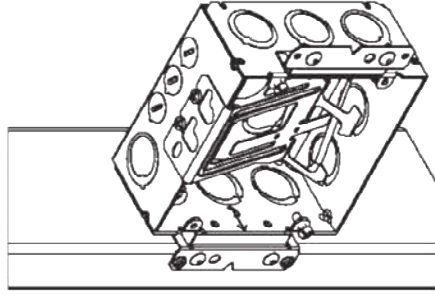
H:989G; B:5B8:8A:9BG€BGC: 'H:9'  
 DFC:81:7HG<CK B'CB'K:€8F5K B; '5F9'  
 G:6>97 HHC:7<5B; 9K #C I HBC:H7 9

(!%#% "GE "L'&!%# "8 D"K #GH56 !+!  
 => / '756 @'A5B5; 9A9BH'6F57?9H

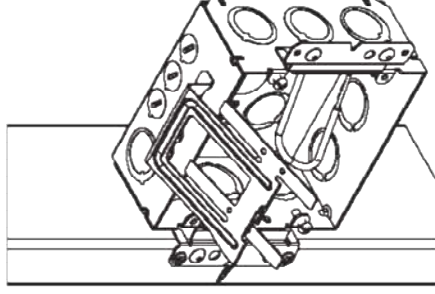
HC @F5B7 9I B @GG C H: 9FK €9 GD97 ÷ 98	<b>RACO</b>			
"LL'897 A 5@±"\$% "LLL'897 A 5@±"\$% 5B; @±&°	8F5K B'6M 5DD"6M 85H9.	ÖŠ PÈÈÈ È ÈÈ ÈJ	G7 5 @. FIG	GA9. 6

# Instructions for using RACO® cable support bracket with STAB-IT® II boxes

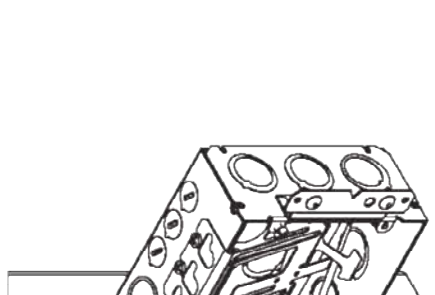
**STEP 1.** Install box to stud



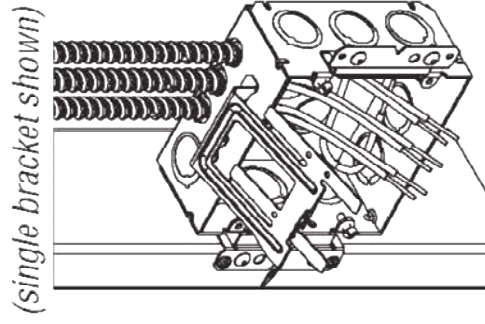
**STEP 2.** Pre-bend cable support bracket as shown



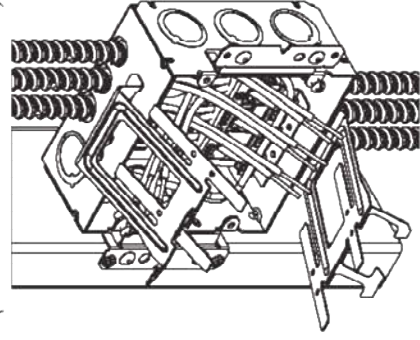
**STEP 3.** Remove pry-out(s) and install cable(s)



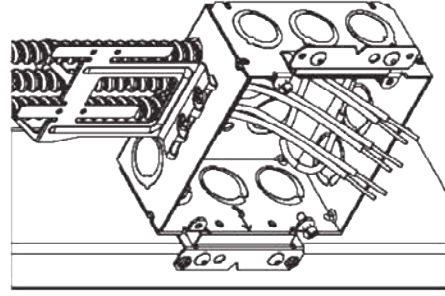
**STEP 4.** Position cable support bracket as shown



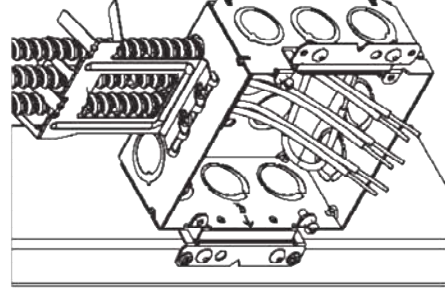
**STEP 5.** Bend down center tabs to lock cables as shown



**STEP 6.** Bend down center tabs to lock cables as shown



**STEP 7.** Bend down center tabs to lock cables as shown



Hubbell Commercial Construction  
Hubbell Incorporated (Delaware)

RACO INC.

28902 W. Sample St., P.O. Box 4002, South Bend, IN 46634  
Phone: (574) 234-7151 FAX: (574) 283-4244

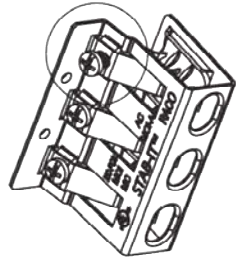
MADE IN CHINA

RA-Inst 347

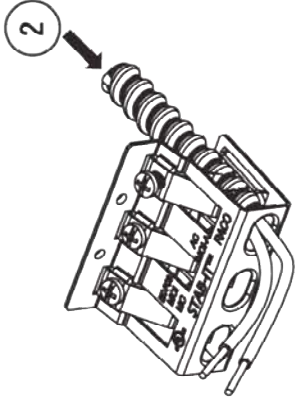
119082 rev 1

## Alternate instructions for installing larger diameter cables in RACO® STAB-IT® II boxes (if needed)

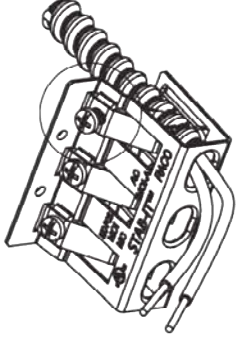
1. Loosen up screw



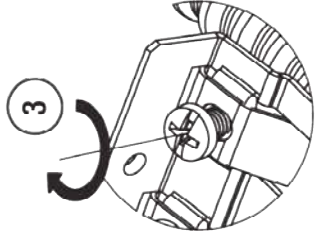
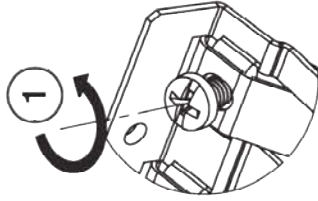
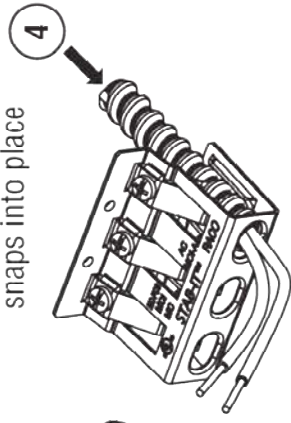
2. Push in cable



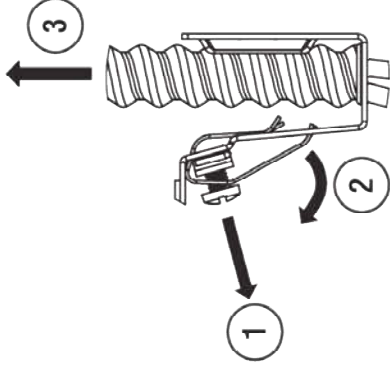
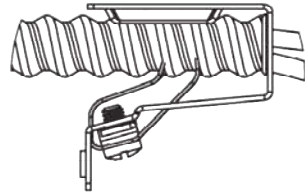
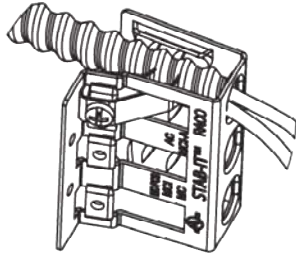
3. Tighten up screw



4. Push in cable until it  
snaps into place



## Instructions for removing cables from RACO® STAB-IT® II boxes



1. Loosen screw

2. Pull the spring clip away from cable as shown

3. Pull cable out