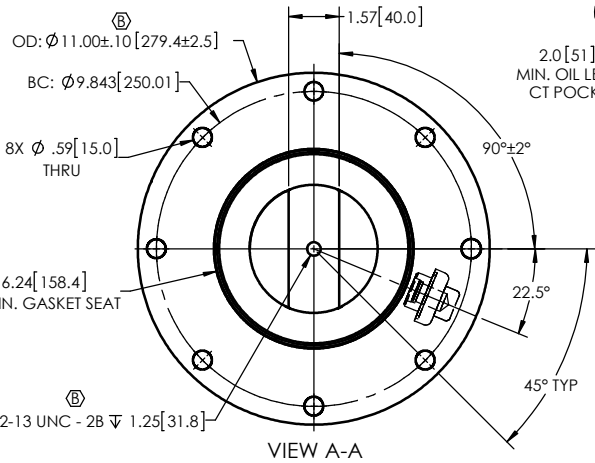
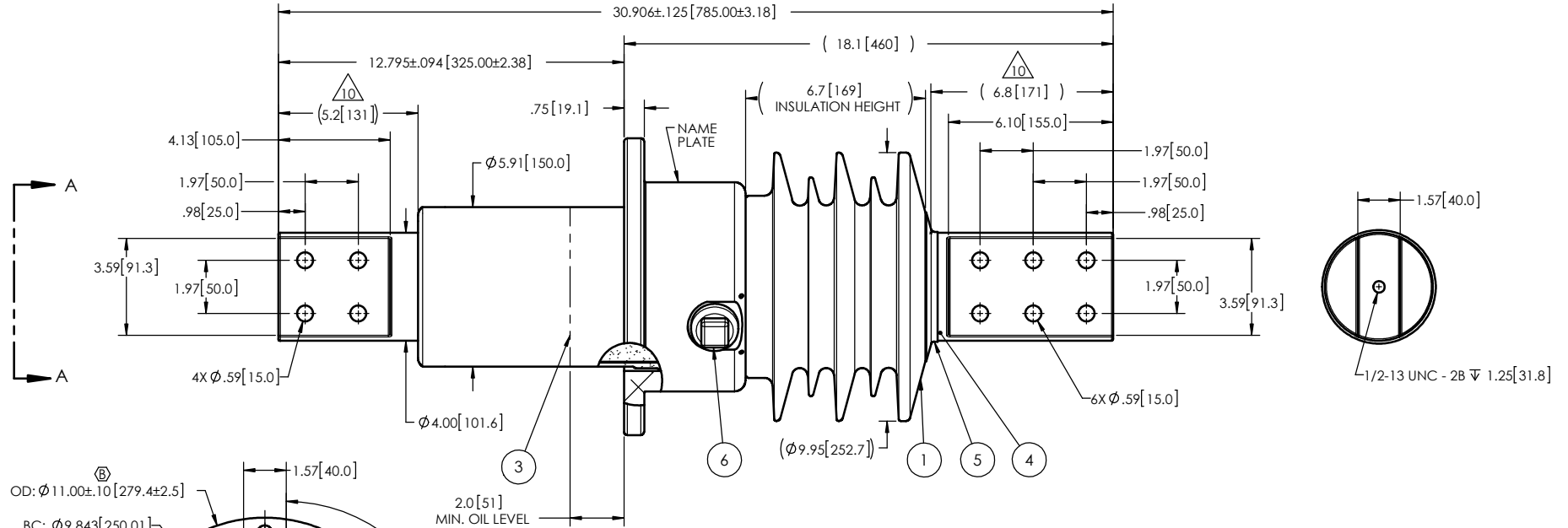


NOTES:

- 1 CREEPAGE DISTANCE: 19.2" / 488mm
- 2 ARC DISTANCE: 8.8" / 224mm
- 3 NOMINAL VOLTAGE: 12kV
- 4 NOMINAL CURRENT: 4000A
- 5 VOLTAGE WITHSTAND, 60 sec.: 30kV
- 6 BIL: 75kV
- 7 ROUTINE TEST ACCORDING TO: CEI 60137
- 8 MAX. TORQUE APPLIED ON FLANGE BOLTS: 70 lbf · ft / 94.9 N · m
- 9 WEIGHT: 139 lb / 63.0 Kg
- 10 SILVER PLATED, AS PER ASTM B700, TYPE 1, GRADE D, CLASS N, NO NICKEL LAYER, FROM 13 TO 20 MICROMETERS THICKNESS

REVISIONS					
ZONE	REV.	DESCRIPTION	DRAWN BY	DATE	APPR.
GENERAL UPDATES			A.SAVARD	2012-11-23	J.V.
C6 A6	B	INCREASE THE TOLERANCE ON THE O.D. OF THE FLANGE ADD A 1/2-13 X 1.25" THREADED HOLE ON THE BOTTOM OF THE ROD	J. CLICHE	2015-09-01	Y.V.



This drawing is the proprietary property of Electro Composites (2008) ULC, not part of the public domain, and is issued with the express understanding and agreement that it is not to be reproduced or copied in whole or in part or issued for furnishing information to others, or used directly or indirectly, in any way detrimental to the interest of Electro Composites (2008) ULC and is to be returned upon request by Electro Composites (2008) ULC. All Rights Reserved.

ITEM NO.	QTY	DRAWING NO.	PART NO.	DESCRIPTION	NOTE / MAT'L
6	1	S-1001-2022		CAPACITANCE TAP ASSEMBLY	ALUMINUM
5	1	S-3974-3543		CAP	COPPER
4	1	S-7838-7433		ROD ASSEMBLY	COPPER
3	1	S-7838-7432		SHIELD ASSEMBLY	COPPER
2	1	S-7838-7431		FLANGE	ALUMINUM
1	1	S-7838-7430	-001	CASTING, CYCLOALIPHATIC RESIN	EC-APG-15 NA

PARTS LIST						
GENERAL TOLERANCES (UNLESS OTHERWISE SPECIFIED)			<p>Electro Composites solid HV bushings solution</p> <p>TITLE: SDC® BUSHING 12kV 4000A MODEL: 075-040-G-255-01</p>			
X.	±0.125	DRAWN BY: J.N.PILOTE DATE: 2012/09/27 CHECK BY: PROJECTING: PROJECT MANAGER:				SCALE: 1:6 SHEET: 1 of 1
.X	±0.094					
.XX	±0.063					
.XXX	±0.010					
REMOVE BURRS AND BREAK SHARP EDGES			DRAWING NO.: S-7838-7430 REVISION: B			
DIMENSIONS ARE IN INCHES (UNLESS OTHERWISE SPECIFIED)						