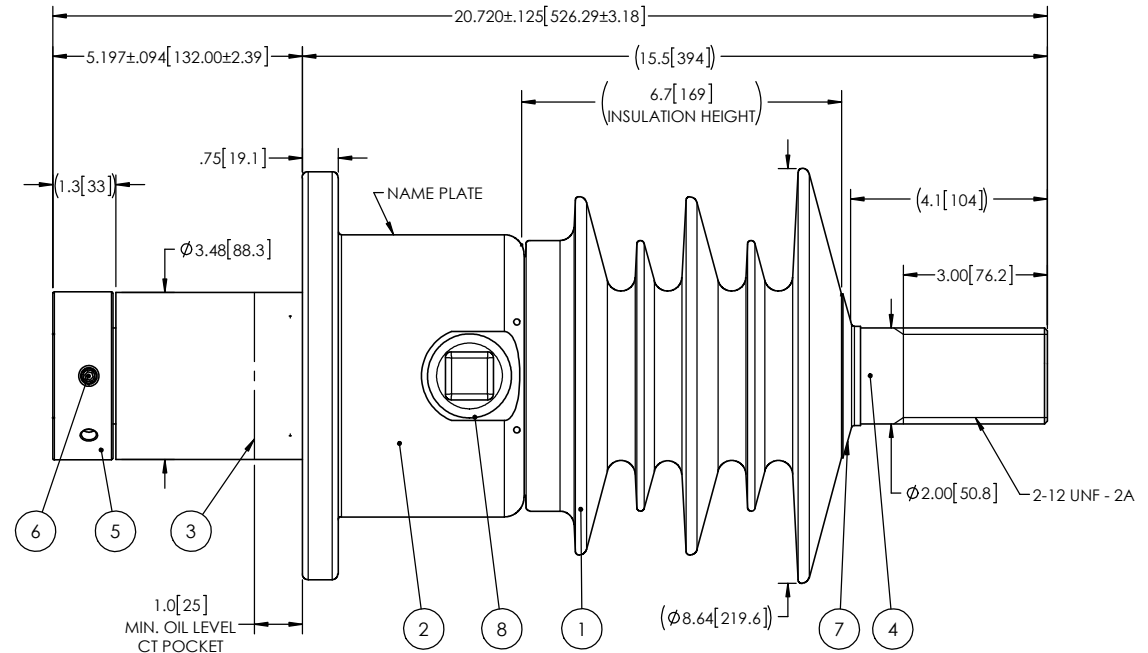
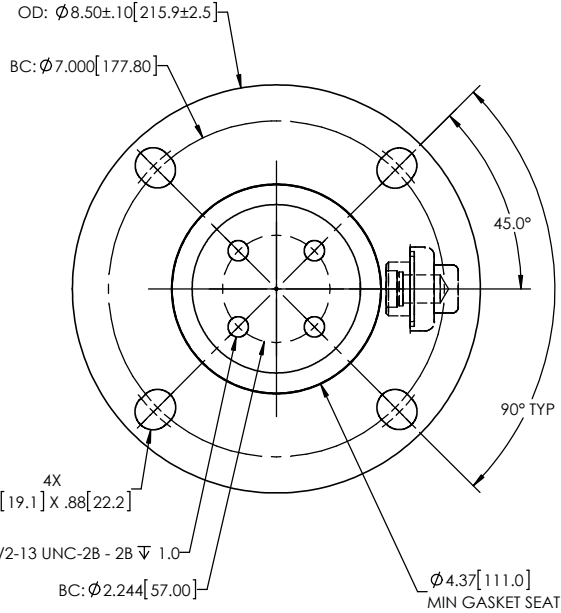


NOTES:

- 1 CREEPAGE DISTANCE: 19.6" / 497mm
- 2 ARC DISTANCE: 9.2" / 234mm
- 3 NOMINAL VOLTAGE: 15kV
- 4 NOMINAL CURRENT: 3000A
- 5 WITHSTAND VOLTAGE, 60 sec.: 50kV
- 6 BIL: 110kV
- 7 ROUTINE TEST ACCORDING TO: IEEE C57.19.01
- 8 MAX. TORQUE APPLIED ON FLANGE BOLTS: 40 lbf · ft/ 54.2 N · m
- 9 WEIGHT: 44 lbs / 20 Kg

REVISIONS					
ZONE	REV.	DESCRIPTION	DRAWN BY	DATE	APPR.



ITEM NO.	QTY	DRAWING NO.	PART NO.	DESCRIPTION	NOTE / MAT'L
8	1	S-1001-2022		CAPACITANCE TAP ASSEMBLY	ALUMINUM
7	1	S-1344-0162-0		CAP	COPPER
6	1		S-1001-2465-210	SET SCREW 5/16-18 -0.5	STEEL
5	1	S-7370-9615		TERMINAL	COPPER
4	1	S-7370-9626		ROD ASSEMBLY	COPPER
3	1	S-7370-9625		SHIELD ASSEMBLY	COPPER
2	1	S-7370-9624		FLANGE	ALUMINUM
1	1	S-7370-9623	-001	CASTING, CYCLOALIPHATIC RESIN	EC-APG-02

PARTS LIST

GENERAL TOLERANCES (UNLESS OTHERWISE SPECIFIED)

X.	±0.125
.X	±0.094
.XX	±0.063
.XXX	±0.031
ANGLES	±0.25°
RADIUS	±0.031

REMOVE BURRS AND BREAK SHARP EDGES

DIMENSIONS ARE IN INCHES (UNLESS OTHERWISE SPECIFIED)

REPLACE:

DRAWN BY: M. FORGET DATE: 2018/02/26

CHECK BY:

PROJECTING:

PROJECT MANAGER:

**ElectroComposites™**  
solid HV bushings solution

TITLE: SDC® BUSHING 15kV, 3000A  
MODEL: 110-030-T-291-01

FORMAT: A	CAGE CODE	DRAWING NO.: S-7370-9623	REVISION: NR
-----------	-----------	--------------------------	--------------

SCALE: 1:4	GENERATED BY: SolidWorks 2013	SHEET: 1 of 1
------------	-------------------------------	---------------

This drawing is the proprietary property of Electro Composites (2008) ULC, not part of the public domain, and is issued with the express understanding and agreement that it is not to be reproduced or copied in whole or in part or issued for furnishing information to others, or used directly or indirectly, in any way detrimental to the interest of Electro Composites (2008) ULC and is to be returned upon request by Electro Composites (2008) ULC. All Rights Reserved.