

CAT. #	SIZE	A	B	C	D	E	F	G	H	J	K	UNS THREAD	DIMPLE
2922RT	1/2" EMT	1.05 [26.7]	2.08 [52.8]	1.12 [28.5]	0.72 [18.4]	0.71 [18]	0.95 [24.2]	0.66 [16.8]	1.03 [26.2]	0.55 [14.1]	1.14 [29]	1/2-14	3
2923RT	3/4" EMT	1.26 [31.9]	2.31 [58.6]	1.35 [34.3]	0.87 [22.2]	0.92 [23.4]	1.15 [29.1]	0.86 [21.7]	1.22 [31]	0.65 [16.5]	1.25 [31.8]	3/4-14	3
2924RT	1" EMT	1.56 [39.6]	2.24 [56.8]	1.65 [41.8]	1.18 [30]	1.18 [30]	1.45 [36.8]	1.16 [29.4]	1.55 [39.4]	0.65 [16.5]	1.33 [33.9]	1" - 14	3
2925RT	1-1/4" EMT	1.91 [48.5]	2.82 [71.7]	2.04 [51.8]	1.38 [35]	1.54 [39]	1.83 [46.6]	1.35 [34.4]	1.96 [49.7]	0.81 [20.6]	1.70 [43.2]	1-1/4" - 14	2
2926RT	1-1/2" EMT	2.14 [54.4]	2.85 [72.4]	2.31 [58.7]	1.74 [44.2]	1.76 [44.7]	2.08 [52.7]	1.60 [40.5]	2.24 [56.9]	0.83 [21.1]	1.69 [42.9]	1-1/2" - 14	2
2928RT	2" EMT	2.61 [66.2]	2.96 [75.2]	2.78 [70.6]	2.20 [55.9]	2.20 [55.9]	2.56 [65]	2.17 [55.1]	2.72 [69.1]	0.83 [21.1]	1.825 [46.4]	2" - 14	2
2950RT	2-1/2" EMT	3.44 [87.4]	4.75 [120.7]	3.62 [92]	2.75 [69.8]	2.91 [73.9]	3.20 [81.3]	2.69 [68.3]	3.33 [84.5]	1.03 [26.1]	3.20 [81.3]	2-1/2" - 11-1/2	2
2952RT	3" EMT	4.07 [103.3]	5.34 [135.5]	4.27 [108.5]	3.57 [90.8]	3.59 [91.1]	3.82 [97]	3.31 [84.1]	4.01 [101.9]	1.14 [28.8]	3.60 [91.3]	3" - 11-1/2	2
2954RT	3-1/2" EMT	4.80 [121.9]	5.46 [138.6]	4.80 [121.9]	4.04 [102.6]	4.01 [101.9]	4.35 [110.6]	3.90 [99.1]	4.47 [113.6]	1.14 [29.1]	3.90 [99]	3-1/2" - 11-1/2	2
2956RT	4" EMT	5.07 [128.8]	5.83 [148.1]	5.30 [134.6]	4.59 [116.7]	4.52 [114.8]	4.80 [121.9]	4.48 [113.7]	5.06 [128.5]	1.18 [29.9]	3.93 [99.8]	4" - 11-1/2	2

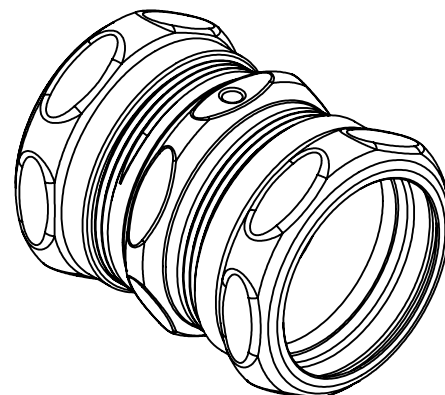
TIGHTENING TORQUE			
(SEE CLAUSES 6.2.1, 8.17.2.1, 8.27.2.1, 8.28.2.2, and 8.28.2.5.)			
TRADE SIZE OF FITTING	METRIC DESIGNATOR	TIGHTENING TORQUE	
		N-m	(lbf-in)
1/4a	10	19.8	175
3/8	12	22.6b	200
1/2	16	33.9	300
3/4	21	56.5	500
1	27	79.1	700
1-1/4	35	113	1000
1-1/2	41	136	1200
2	53	181	1600
2-1/2	63	181	1600
3	78	181	1600
3-1/2	91	181	1600
4	103	181	1600

a APPLIES TO FLEXIBLE CORD FITTINGS ONLY
b A 3/8 (12) TRADE-SIZE FITTING FOR USE WITH LIQUID-TIGHT FLEXIBLE METAL CONDUIT SHALL BE TIGHTENED WITH A TORQUE OF 26.5 N-M (235 LBF-IN).

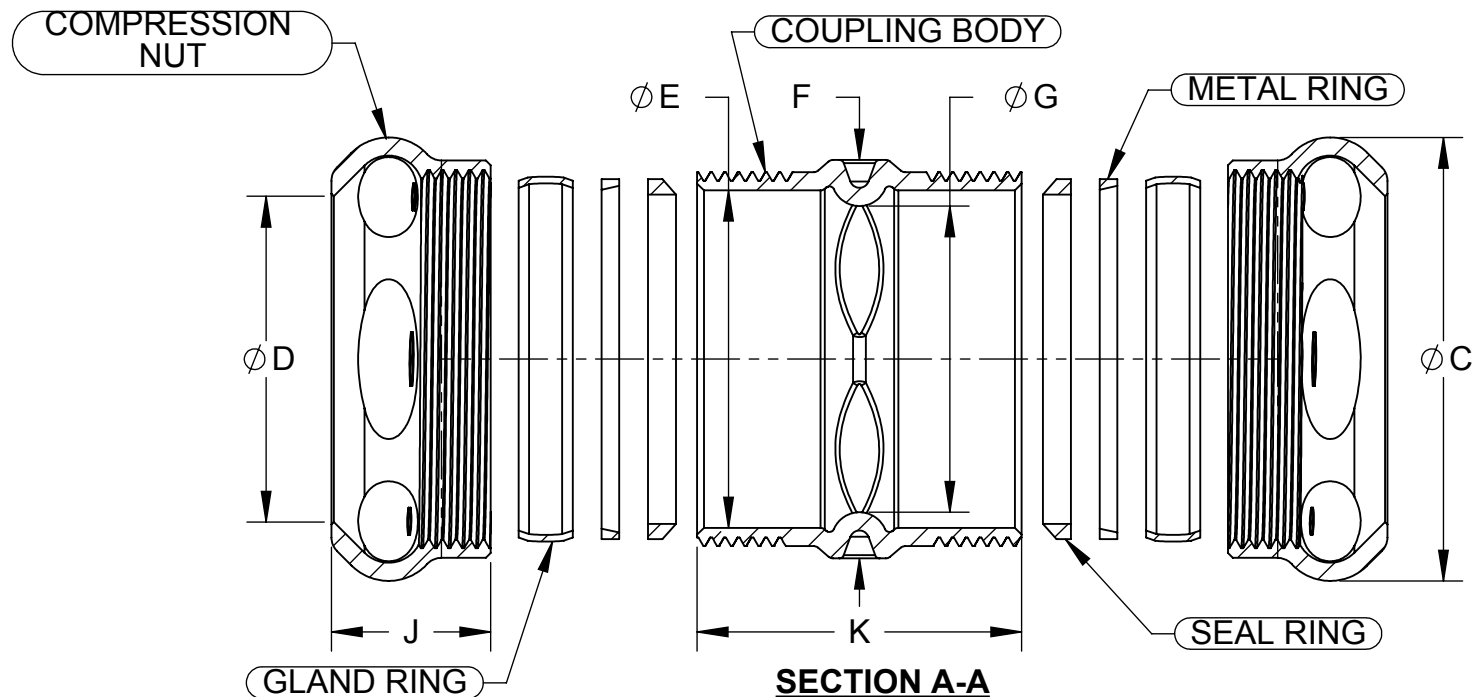
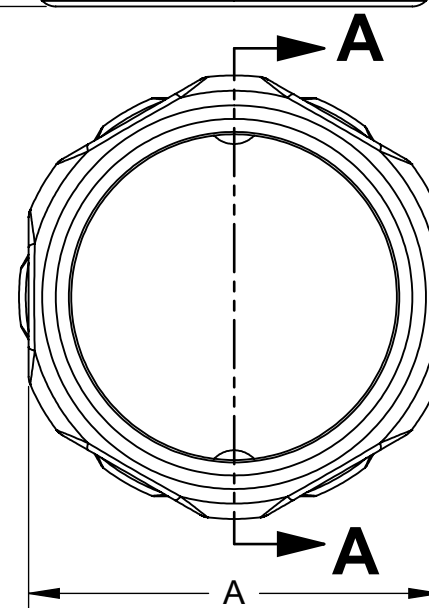
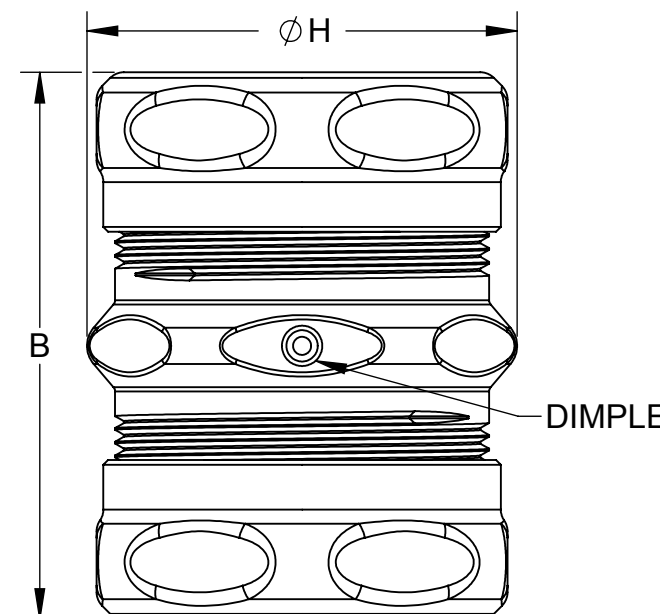
LIST OF PARTS		
DESCRIPTION	MATERIAL	FINISH
COUPLING BODY	STEEL	.0005 ZINC MIN.
COMPRESSION NUT	STEEL	.0005 ZINC MIN.
GLAND RING	STEEL	.0005 ZINC MIN.
METAL RING	STEEL	.0005 ZINC MIN.
SEAL RING	POLYPROPYLENE	CLEAR

NOTES:

1. ALL DIMENSIONS ARE IN INCHES AND [MILLIMETERS].
2. LOCKNUT SHALL BE HAND-TIGHTENED AND THEN FURTHER TIGHTENED 1/4 TURN WITH A HAMMER AND A FLAT BLADED SCREWDRIVER OR BY AN EQUIVALENT METHOD.
3. RAIN TIGHT.
4. cULus LISTED.



**ISOMETRIC VIEW
SCALE 2 : 3**



INITIAL RELEASE	S.J.	
SYM. REVISION DESCRIPTION	APP	DATE
THE DESIGN AND DIMENSIONS OF THE PRODUCT SHOWN ON THIS DRAWING ARE SUBJECT TO CHANGE WITHOUT NOTICE		
TITLE: COMPRESSION COUPLING-STEEL CUS		
TOLERANCE UNLESS OTHERWISE SPECIFIED		SCALE: 1:1
.XX DECIMAL ±.015	RACO South Bend, Indiana DRAWN BY: M.M. APP. BY: S.J. DATE: 09/23/2016	SIZE: B
.XXX DECIMAL ±.005		
ANGLE ±2°		