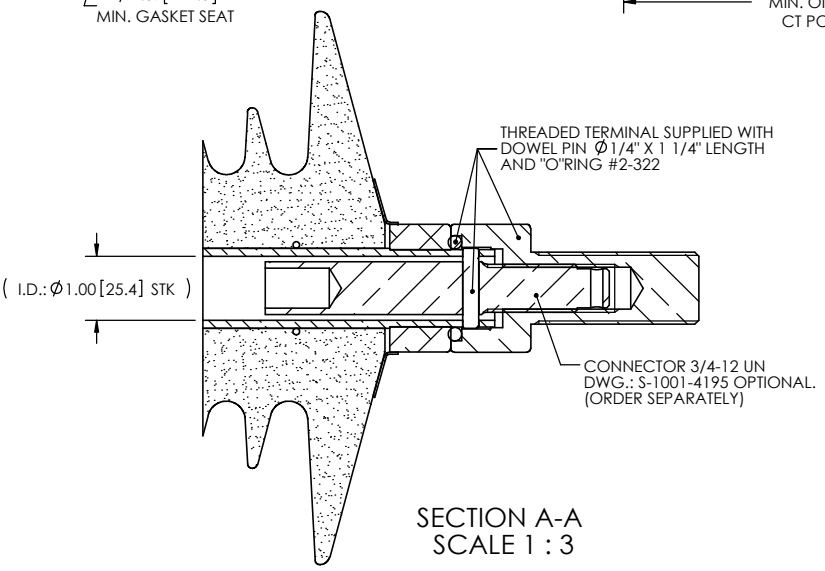
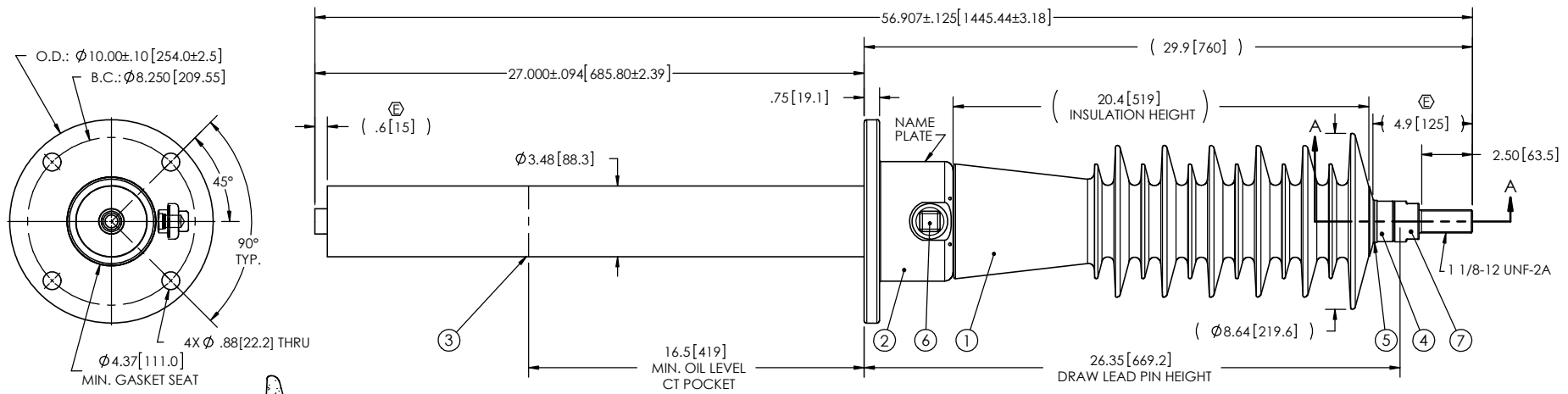


- NOTES:
- 1 CREEPAGE DISTANCE: 49.6" / 1260mm
  - 2 ARC DISTANCE: 22.6" / 573mm
  - 3 NOMINAL VOLTAGE: 46kV
  - 4 NOMINAL CURRENT: 400A
  - 5 VOLTAGE WITHSTAND, 60 sec.: 105kV
  - 6 BIL : 250kV
  - 7 ROUTINE TEST ACCORDING TO: IEEE C57.19.01
  - 8 MAX. TORQUE APPLIED ON FLANGE BOLTS: 40 lbf·ft / 54.2 N·m
  - 9 WEIGHT: 57 lb / 25.4 Kg

REVISIONS					
ZONE	REV.	DESCRIPTION	DRAWN BY	DATE	APPR.
	A	DRAWING UPDATED AS PER STANDARD + CONNECTOR CHANGED: S-1001-4195 REPLACES S-4904-4645 + FLANGED O.D. WAS Ø10.25"	A.SAVARD	2011/11/28	J.V.
	B	FLANGE HOLE Ø WAS 0.75. IT WAS A TYPING ERROR	A.SAVARD	2011/11/28	J.V.
	C	MATERIAL OF TUBE ASSEMBLY AND CAP HAS BEEN CHANGED	A.SAVARD	2012-11-27	J.V.
E3 E4	D	TOLERANCE CHANGE FROM ±.094 TO ±.125 ADD THE MINIMUM GASKET SEAT DIMENSION TOLERANCE CHANGE FROM ±.125 TO ±.094	J. CLICHE	2014-03-12	J.V.
E1,E5	E	DRAWING ADJUSTMENTS OF ITEMS #2(FLANGE), #3(SHIELD) & #4(TUBE)	M. FORGET	2018-04-18	J.V.



ITEM NO.	QTY	DRAWING NO.	PART NO.	DESCRIPTION	NOTE / MAT'L
7	1	S-4904-4657-0		THREADED TERMINAL KIT	COPPER
6	1	S-1001-2022		CAPACITANCE TAP ASSEMBLY	ALUMINUM
5	1	S-1344-0162-1		CAP	ALUMINUM
4	1	S-4904-4644		TUBE ASSEMBLY	ALUMINUM
3	1	S-4904-4643		SHIELD ASSEMBLY	COPPER
2	1	S-4904-4642		FLANGE	ALUMINUM
1	1	S-4904-4641	-001	CASTING, CYCLOALIPHATIC RESIN	EC-APG-02

**PARTS LIST**

GENERAL TOLERANCES (UNLESS OTHERWISE SPECIFIED)		<b>Electro Composites</b> <b>solid HV bushings solution</b>	
X.	±0.125		
.X	±0.094	<b>TITLE:</b> <b>SDC® BUSHING 46kV, 400A</b> <b>MODEL: 250-004-T-296-01</b>	
.XX	±0.063		
.XXX	±0.031	<b>DRAWN BY:</b> I. LÉVEILLÉ <b>DATE:</b> 2008/01/28	
ANGLES	±0.25°	<b>PROJECTING:</b>	
RADIUS	±0.031	<b>PROJECT MANAGER:</b>	
REMOVE BURRS AND BREAK SHARP EDGES		<b>SCALE:</b> 1:8	
DIMENSIONS ARE IN INCHES (UNLESS OTHERWISE SPECIFIED)		<b>GENERATED BY:</b> SolidWorks 2013	

This drawing is the proprietary property of Electro Composites (2008) ULC, not part of the public domain, and is issued with the express understanding and agreement that it is not to be reproduced or copied in whole or in part or issued for furnishing information to others, or used directly or indirectly, in any way detrimental to the interest of Electro Composites (2008) ULC and is to be returned upon request by Electro Composites (2008) ULC. All Rights Reserved.

F  
E  
D  
C  
B  
A

F  
E  
D  
C  
B  
A

6 5 4 3 2 1

6 5 4 3 2 1