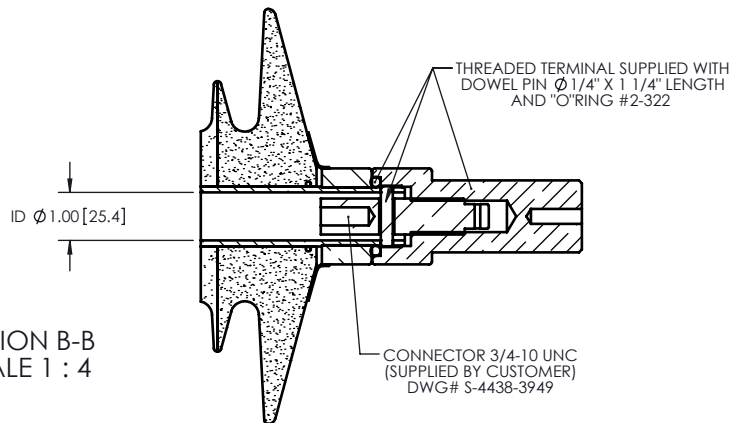
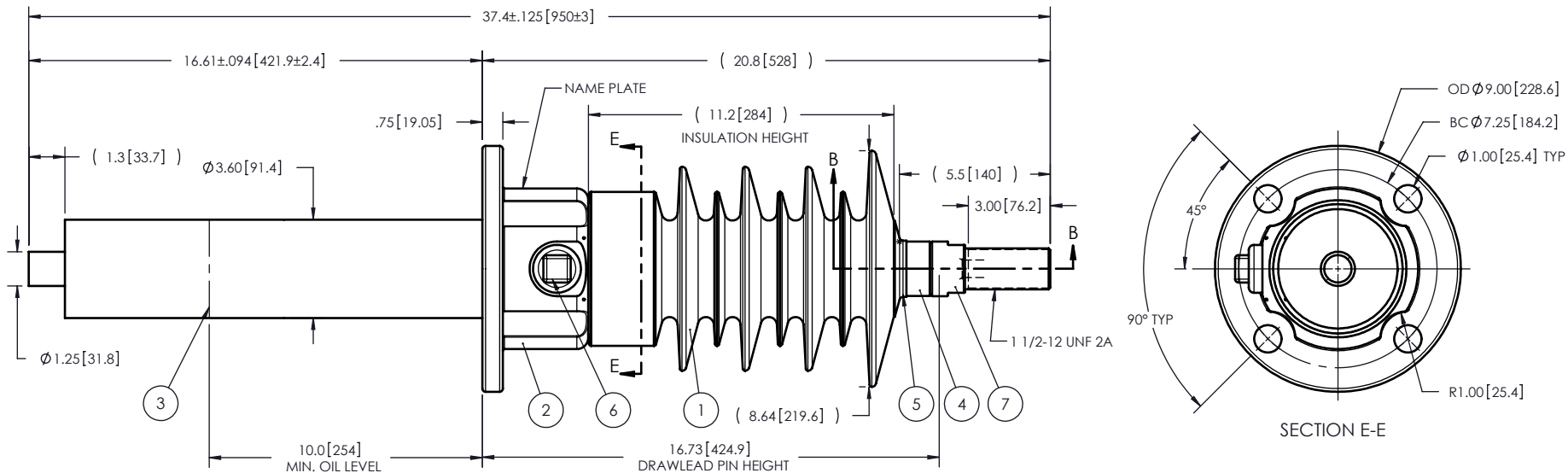


NOTES:

- 1 CREEPAGE DISTANCE: 30.6" / 776mm
- 2 ARC DISTANCE: 13.4" / 340mm
- 3 NOMINAL VOLTAGE: 27.5kV
- 4 NOMINAL CURRENT: 400A
- 5 WITHSTAND VOLTAGE AT 60 sec.: 70kV
- 6 B.I.L. : 150kV
- 7 ROUTINE TEST ACCORDING TO CSA-C88,1-96
- 8 MAX. TORQUE APPLIED ON FLANGE BOLTS: 40 lbf.ft/ 52.4 N.m
- 9 WEIGHT: 44 lbs / 20.0 Kg



ITEM NO.	QTY	DRAWING NO.	PART NO.	DESCRIPTION	NOTE / MAT'L
7	1	S-4772-4106		THREADED TERMINAL KIT	COPPER
6	1	S-1001-2022		CAPACITANCE TAP ASSEMBLY	ALUMINUM
5	1	S-1344-0162		CAP	COPPER
4	1	S-4772-4105		ROD ASSEMBLY	BRASS
3	1	S-4772-4104		SHIELD ASSEMBLY	COPPER
2	1	S-6525-6129		FLANGE	ALUMINUM
1	1	S-6525-6128	-001	CASTING, CYCLOALIPHATIC RESIN	EC-APG-02

PARTS LIST

<p>GENERAL TOLERANCES (UNLESS OTHERWISE SPECIFIED)</p> <p>X. ±0.125 .X ±0.094 .XX ±0.063 .XXX ±0.010 ANGLES ±0.25° RADIUS ±0.031</p> <p>REMOVE BURRS AND BREAK SHARP EDGES</p> <p>DIMENSIONS ARE IN INCHES (UNLESS OTHERWISE SPECIFIED)</p>		<p>REPLACE:</p> <p>DRAWN BY: J.N.PILOTTE DATE: 2010/10/05</p> <p>CHECK BY:</p> <p>PROJECT ENG.:</p> <p>PROJECT MANAGER:</p>	<p>ElectroComposites™ solid HV bushings solution</p> <p>TITLE: BUSHING 27.5kV, 400A MODEL: 150-004-T-300-01</p> <p>FORMAT: A CAGE CODE: S6525-6128 DRAWING NO.: NR REVISION:</p> <p>SCALE: 1:6 GENERATED BY: SolidWorks 2009 SHEET: 1 of 1</p>
---	--	---	--

This drawing is the proprietary property of Electro Composites (2008) ULC, not part of the public domain, and is issued with the express understanding and agreement that it is not to be reproduced or copied in whole or in part or issued for furnishing information to others, or used directly or indirectly, in any way detrimental to the interest of Electro Composites (2008) ULC and is to be returned upon request by Electro Composites (2008) ULC. All Rights Reserved.