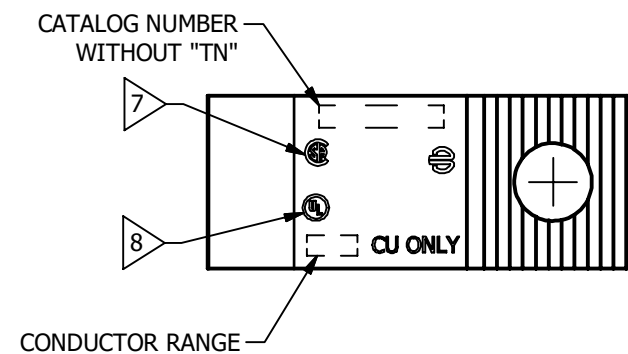
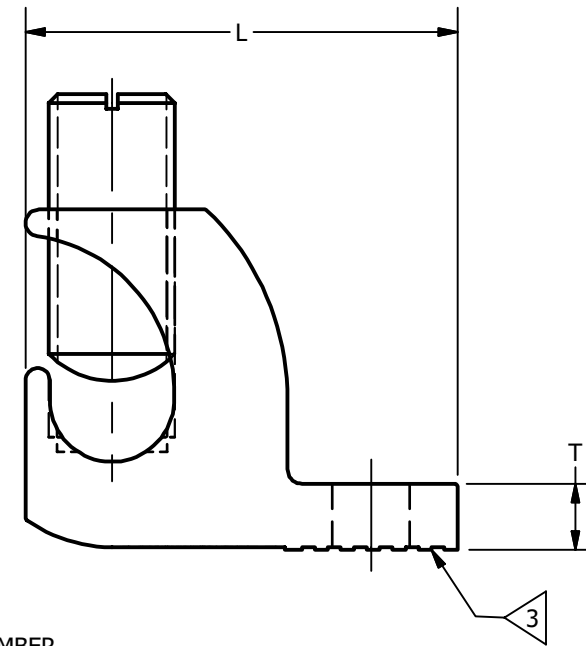
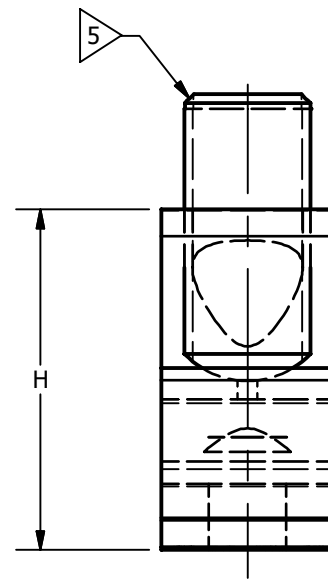
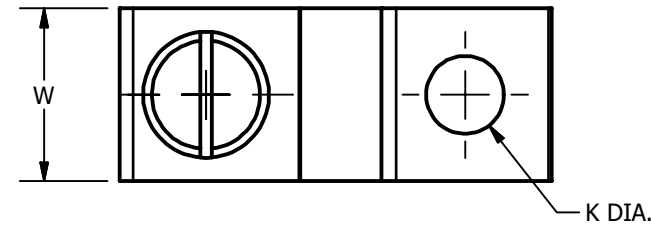


CATALOG NUMBER	DIMENSION					CONDUCTOR RANGE	STUD SIZE
	H	W	L	T	K DIA.		
CL1/0-14TN	1.17 [30]	.60 [15]	1.50 [38]	.22 [6]	.27 [7]	1/0-14	7/16-20, (SLOTTED)
CL3/0-516TN	1.56 [40]	.80 [20]	2.00 [51]	.30 [8]	.33 [8]	3/0-6	9/16-18, (.25 HEX)
CL250-516TN	1.79 [46]	.80 [20]	2.20 [56]	.30 [8]	.33 [8]	250-6	9/16-18, (.25 HEX)

REV	DATE	DESCRIPTION	ECO	BY	C'H'K.
C	11/24/2020	REDRAWN IN INVENTOR AND MARKING POSITION CHANGED	54561	PB	RG



NOTES:

1. MATERIAL : BODY - COPPER  
SCREW - STEEL

2. ACCOMMODATES : SEE TABLE

3 MAY BE PROVIDED WITH OR WITHOUT SERRATIONS ON UNDERSIDE OF TONGUE.

4. TIN PLATED BODY.

5 SEE TABLE FOR SET SCREW TYPE.

6. DIMENSIONS IN BRACKETS [ ] ARE IN MILLIMETERS ROUNDED OFF TO THE NEAREST MILLIMETER, UNLESS OTHERWISE NOTED, AND ARE FOR REFERENCE ONLY.

7 CSA LISTED.

8 UL LISTED.

TO ORDER BURNDY® PRODUCTS CALL

UNITED STATES  
1-800-346-4175 (LONDONDERRY, NH)

CANADA:  
1-800-387-6487

FOR PRODUCT INFO: <http://www.burndy.com>

LAY-IN LUG, COPPER (TIN PLATED)

ITEM NO: --	
CAT. NO: SEE TABLE	
DRAWN BY: AUGUSTIN 04/06/2010	
CHECKER: J.PARKER 07/29/2010	
DSN APRVL: J.PARKER 07/29/2010	
MFG APRVL: P.KEENAN 08/09/2010	
QA APRVL: J.BRODEUR 07/29/2010	
MKT APRVL: P.THERRIEN 08/11/2010	
PROD FAM: CM&R MECHANICAL	DRAWING NO
PROJECT #: --	SIZE
DOCUMENT TYPE: SALES	30000650
REL LEVEL: Released	B
	SHEET 1 OF 1
	C

