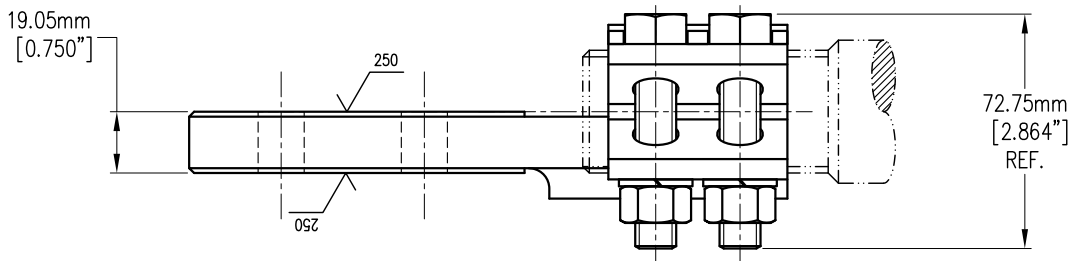
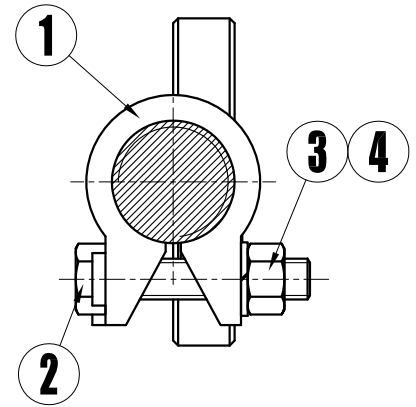
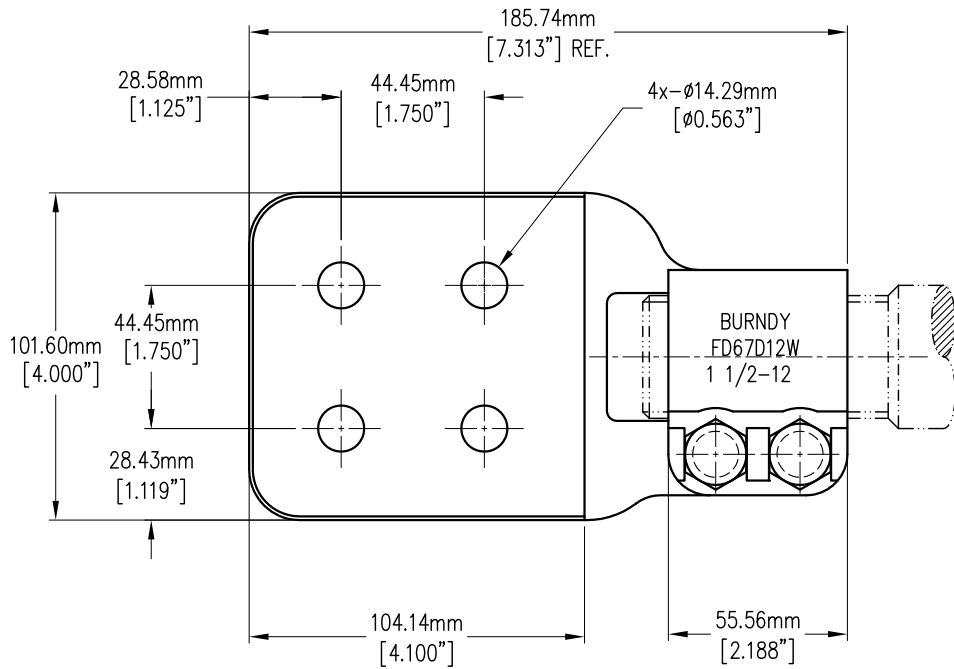


REV.	DATE	DESCRIPTION	ECO	BY	APPROVED
D	18/06/12	CATALOG FD67D12WTI IS ADDED AND DIMENSIONS UPDATED	EC0027816	RAFAEL P.A.	A. PINEDA
E	07/09/16	THE NOTE 3 AND 4 IS ADDED AND IS ELIMINATED "H" FROM LEGEND	EC0044862	RAFAEL P.A.	G.ORDÓÑEZ



CATALOG FD67D12W				CATALOG FD67D12WTI			
ID	DESCRIPTION	QTY.	ITEM No.	ID	DESCRIPTION	QTY.	ITEM No.
1	FD67D12P1W - CASTING BODY OF COPPER TIN	1	30002473	1	FD67D12P1W - CASTING BODY OF COPPER TIN	1	30002473
2	HEB235W-HEX BOLT BS 1/2 x 2-1/2	2	02200141	2	HSSB50x250-HEX BOLT STAINLESS STEEL 1/2 x 2-1/2	2	30017516
3	HEN31W-HEX NUT BS 1/2-13H	2	02200162	3	HSSN50-HEX NUT STAINLESS STEEL 1/2-13H	2	10042252
4	NW30W-1/2 SPLIT BS	2	02200183	4	SWSS50-1/2 SPLIT LW, STAINLESS STEEL	2	30018582

GENERAL NOTES:

- 1.-THIS DRAWING SHALL BE INTERPRETED PER ASME Y 14.5M-1994
- 2.- GENERAL TOLERANCE: $\pm 3.175\text{mm}[0.125"]$ (UNLESS OTHERWISE SPECIFIED)
- 3.-CHECKED BY DOCUMENT MSUK1
- 4.-LA TERMINACION "TI" NO SE MARCA EN LA PIEZA.

SPECIFICATIONS

RANGE CONNECTION: STUD: $\phi 1\ 1/2 - 12\ \text{UNC TO FLAT PAD}$
 MECHANICAL RESISTANCE: N/A
 CONDUCTIVITY: 18.5% IACS MIN.
 FINISH: TIN PLATED

TOOLS

TOOL: WRENCH BOLT (3/4")
 DIE SET: N/A
 TORQUE: 480 Lb*in

CURRENT LOAD: 2100 AMP THIS RANGE COULD CHANGE UNDER CERTAIN AMBIENTAL CONDITIONS

COPPER TINNED CONNECTOR FOR STUD OF $\phi 1-1/2 - 12\ \text{UNC TO FLAT PAD}$

ITEM NO.: 30002461 / 30019096

CATALOG No.: FD67D12W /FD67D12WTI

SCALE:	SIN ESCALA
DRAWN BY:	RAFAEL P.A. 07/09/16
APPR. BY ENG.:	ALEJANDRO P. 07/09/16
APPR. BY PROD. ENG.:	G. ORDOÑEZ 07/09/16
APPR. BY MANUFACT.:	SERGIO C. 07/09/16
APPR. BY QUALITY:	E. VARGAS 07/09/16
APPR. BY SALES:	J.C. PRIOR 07/09/16
PRODUCT FAMILY:	FD
PROJECT No.:	---
DOCUMENT TYPE:	DRAWASMS
AUT. LEVEL:	---



DRAWING No. REV.

30002796

SHEET: 1 OF 1

E