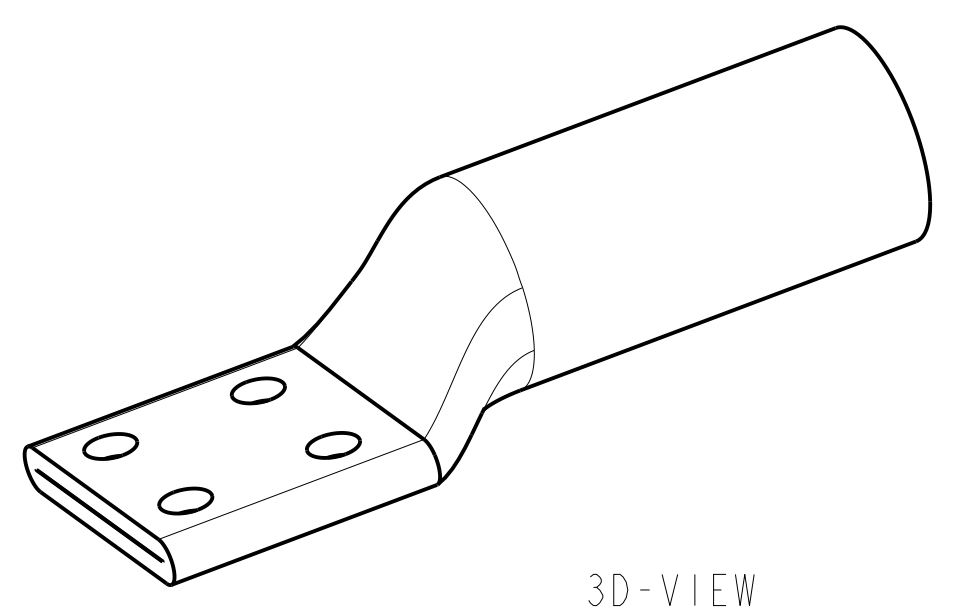


CATALOG NO.	STRANDED COPPER CONDUCTOR ACCOMMODATED		BOLT SIZE	METRIC BOLT SIZE	DIMENSIONS									
	CODE (AWG)	METRIC SIZE (CLASS 2)			B ±.09	C ±.06	E ±.02	F ±.02	K DIA. ±.02	L ±.15	N ±.06	O.D. ±.01	T REF.	Z MIN.
YA444NDTS	1000 Kcmil	500mm ² STR [28.3]	1/2	M12	3.00 [76]	3.00 [76]	1.75 [44]	1.75 [44]	.56 [14]	.63 [16]	7.14 [181]	1.50 [38]	.23 [6]	.64 [16]
YA454NDTS	1250 Kcmil	--	1/2	M12	3.19 [81]						7.44 [189]	1.69 [43]	.30 [8]	
YA464NDTS	1500 Kcmil	800mm ² STR [37.6]	1/2	M12	3.44 [76]						7.55 [192]	1.84 [47]	.34 [9]	
YA474NDTS	1750 Kcmil	--	1/2	M12	3.44 [76]						7.89 [200]	1.98 [50]	.39 [10]	
YA484NDTS	2000 Kcmil	1000mm ² STR [42.2]	1/2	M12	3.10 [79]						7.98 [203]	2.13 [54]	.46 [12]	
YA4864NDTS	2500 Kcmil	--	1/2	M12	4.69 [119]						3.46 [88]	9.38 [238]	2.38 [60]	

REV	DATE	DESCRIPTION	ECO	BY	C.H.K.
B	10/27/2016 12:00:00 PM	UPDATED FORMAT	45166	SM	MB

D

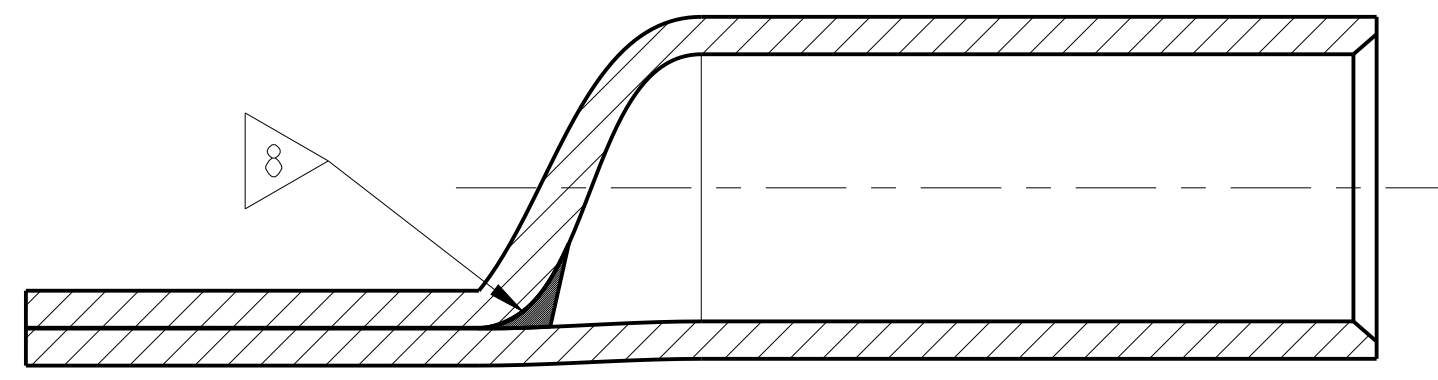
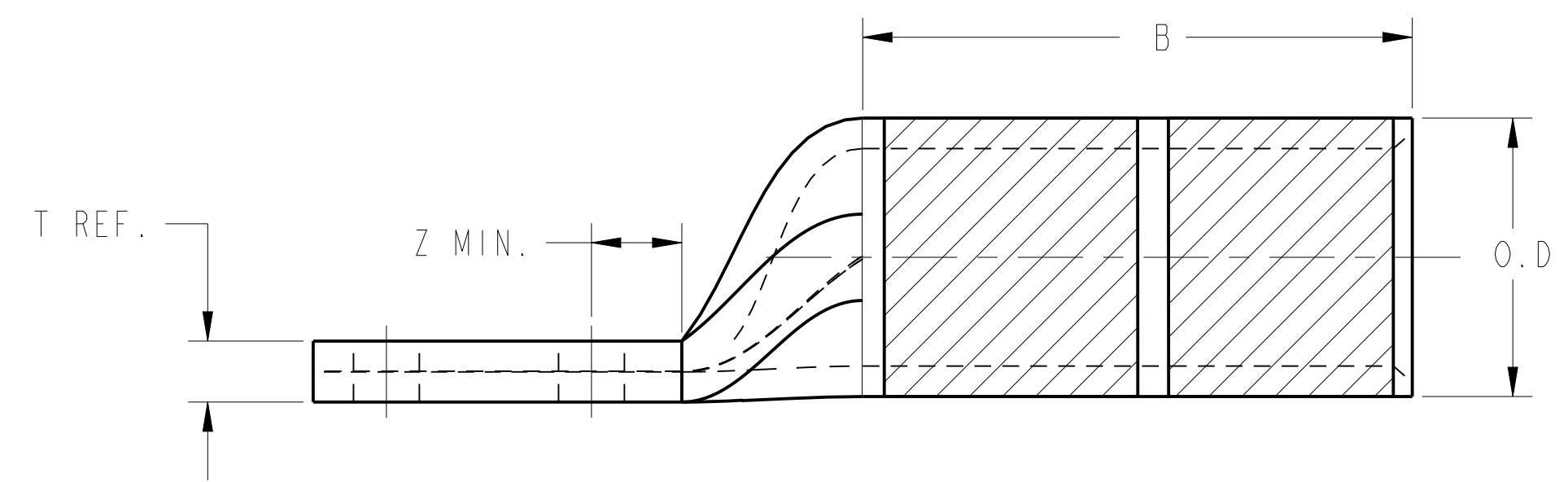
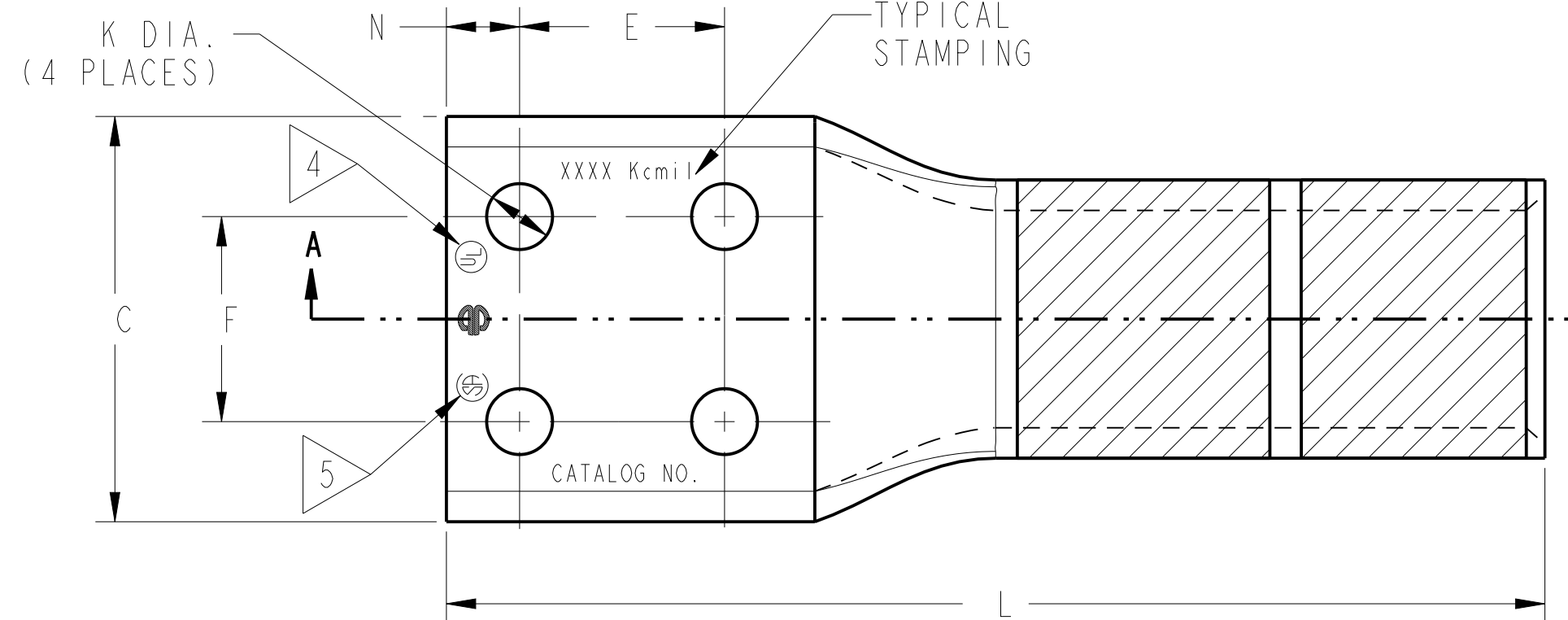
D



3D-VIEW

INSTALLATION TOOLING (# CRIMPS)

CATALOG NO.	COLOR CODE	DIE INFORMATION		HYDRAULIC				DIELESS (# CRIMPS)	WIRE STRIP LENGTH
		DIE INDEX	TYPE	Y46	Y45	Y48B	Y60BHU		
YA444NDTS	WHITE	27	WHITE DIE SET	P44RT(4)	S44RT(4)	C44R(2)	L44RT(2)	HYDRAULIC: Y644M(1) PAT644M(1)	3-1/16"
			NEST	P44D(2)	--	C44D(2)	--		
			INDENTOR	P44PR	--	Y48PR	--		
YA454NDTS	YELLOW	29	YELLOW DIE SET	P45RT(6)	S45RT(6)	C45R(3)	L45RT(3)	--	3-1/14"
			NEST	P45D(3)	--	C45D(3)	--		
			INDENTOR	P44PR	--	Y48PR	--		
YA464NDTS	GREEN	31	GREEN DIE SET	P46RT(6)	S46RT(6)	C46R(3)	L46RT(3)	--	3-1/14"
			NEST	Y48PR(3) ⁷	--	C46D(3)	--		
			INDENTOR	--	--	Y48PR	--		
YA474NDTS	GRAY	33	GRAY DIE SET	--	--	C47R(16)	L47RT(3)	--	3-1/12"
			NEST	--	--	C47D(3)	--		
			INDENTOR	--	--	Y48PR	--		
YA484NDTS	BROWN	34	BROWN DIE SET	--	--	--	L48RT(4)	--	3-1/12"
			NEST	--	--	C48D(3)	--		
			INDENTOR	--	--	Y48PR	--		
YA4864NDTS	--	--	DIE SET	--	--	--	L486RT(4)	--	4-3/4"
			NEST	--	--	--	--		
			INDENTOR	--	--	--	--		



SECTION A-A

- NOTES:
- MATERIAL: COPPER TUBING.
 - FINISH: ELECTRO TIN PLATED.
 - DIMENSIONS IN BRACKETS [] ARE IN MILLIMETERS ROUNDED OFF TO THE NEAREST MILLIMETER, UNLESS OTHERWISE SPECIFIED, AND ARE FOR REFERENCE ONLY.
 - CONNECTORS ARE UL LISTED. 2500 kcmil IS NOT LISTED OR CERTIFIED, BECAUSE THE STANDARD(S) ONLY INCLUDES UP TO 2000 kcmil CONDUCTOR.
 - CONNECTORS ARE CSA CERTIFIED. 2500 kcmil IS NOT LISTED OR CERTIFIED, BECAUSE THE STANDARD(S) ONLY INCLUDES UP TO 2000 kcmil CONDUCTOR.
 - "L" DIE SETS ARE COLOR CODED. "C" DIES ARE NOT COLOR CODED. NESTS AND INDENTOR TYPE ARE NOT COLOR CODED.
 - INDENTOR ONLY - NO NEST REQUIRED.
 - SUFFIX "DTS" INDICATES CRIMP BARREL SEALED AIRTIGHT WITHIN THE TRANSITION.

TO ORDER BURNDY® PRODUCTS CALL UNITED STATES 1-800-346-4175 (LONDONDERRY, NH) CANADA: 1-800-361-6975 (QUEBEC) 1-800-387-6487 (ALL OTHER PROVINCES) FOR PRODUCT INFO: http://www.burndy.com	HYLUG™		
	ITEM NO:	N/A	
	CAT. NO:	YA--NDTS (TABLE)	
	DRAWN BY:	T.SATHISH	06/29/10
	CHECKER:	--	--
	DSN APPVL:	--	--
	MFG APPVL:	--	--
	QA APPVL:	--	--
	MKT APPVL:	--	--
	PROD FAM:	CM&R COMPRESSION	DRAWING NO
PROJECT #:	--	SIZE	30003954
DOCUMENT TYPE:	Sales		B
REL LEVEL:	Released		

REV: PEO200