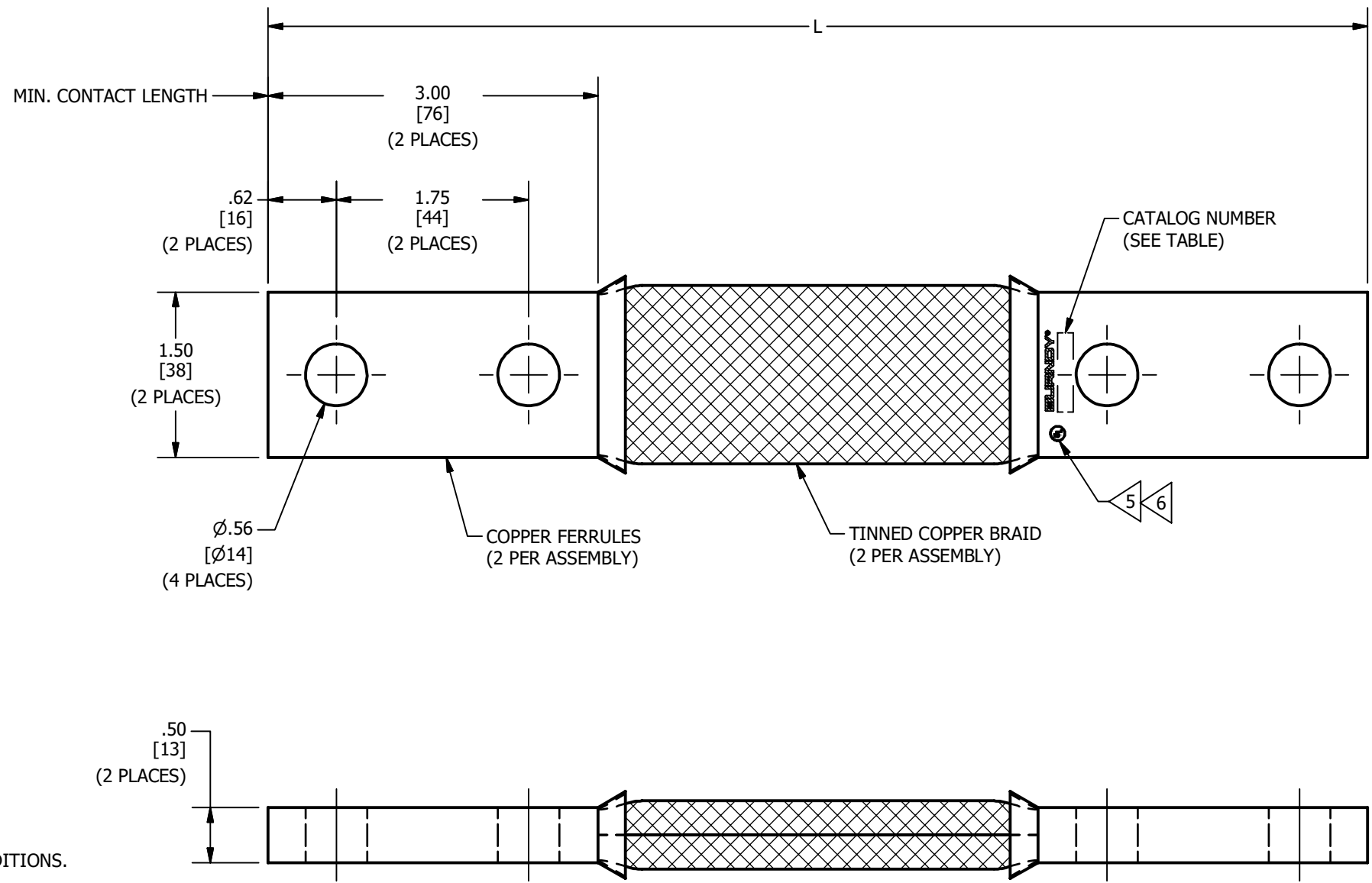


CATALOG NUMBER	ITEM NUMBER	L
B2G9N	332277	9.00 [229]
B2G9D50N	332281	9.50 [241]
B2G10N	50122108	10.00 [254]
B2G12N	3320AA	12.00 [305]
B2G13N	000736	13.00 [330]
B2G14N	332681	14.00 [356]
B2G15N	50139553	15.00 [381]
B2G16N	332139	16.00 [406]
B2G18N	33286Q	18.00 [457]
B2G19N	332118	19.00 [483]
B2G20N	332529	20.00 [508]
B2G22NW	332399	22.00 [559]
B2G24N	332208	24.00 [610]
B2G26N	001470	26.00 [660]
B2G27N	001471	27.00 [686]
B2G28N	332974	28.00 [711]
B2G30N	332927	30.00 [762]
B2G36N	33214T	36.00 [914]
B2G42N	25015128	42.00 [1067]
B2G48N	25018928	48.00 [1219]
B2G55N	332956	55.00 [1397]
B2G58NTN	33206G	58.00 [1473]
B2G60N	25018929	60.00 [1524]
B2G72NTN	26002379	72.00 [1829]

REV	DATE	DESCRIPTION	ECO	BY	C'H.K.
D	05/10/2023	ITEM NUMBER UPDATED FOR B2G15N	230509030159	PB	RG



NOTES:

- APPROXIMATE AMP. RATING: 700 INDOOR, 840 OUTDOOR. THIS RATING MAY VARY WITH AMBIENT CONDITIONS, ORIENTATION OF THE BRAID AND OTHER SERVICE CONDITIONS.
- DIMENSIONS IN BRACKETS [] ARE IN MILLIMETERS ROUNDED OFF TO THE NEAREST MILLIMETER, UNLESS OTHERWISE SPECIFIED AND ARE FOR REFERENCE ONLY.

- CAN BE ORDERED WITH UNDRILLED FERULES BY ADDING SUFFIX "U".
- CAN BE ORDERED WITH PLATED FERRULES BY ADDING SUFFIX AS SHOWN BELOW:
 "NK" - FOR NICKEL PLATING
 "SV" - FOR SILVER PLATING
 "TN" - FOR TIN PLATING
 "W" - FOR HOT TIN DIPPED

- ALL SIZES ARE LISTED TO UL467 GROUNDING & BONDING EQUIPMENT STANDARDS WITH THE EXCEPTION OF CATALOG NUMBERS WITH UNDRILLED FERRULES.
- BRAID SIZES MAY BE DESIGNATED BY SUFFIXES REPRESENTING VARIATIONS IN LENGTH, QUANTITY & SIZE OF MOUNTING HOLES, PAD SIZE AND FINISH. (REF. NOTE 5)

TO ORDER BURNDY® PRODUCTS CALL UNITED STATES 1-800-346-4175 (LONDONDERRY, NH) CANADA: 1-800-387-6487 FOR PRODUCT INFO: http://www.burndy.com	BRAID, FLEXIBLE	
	ITEM NO: SEE TABLE	
	CAT. NO: B2G--N (TABLE)	
	DRAWN BY: D.GANESH 5/9/2011	CHECKER: E.MARTIN 5/16/2011
	DSN APRVL: E.MARTIN 5/16/2011	MFG APRVL: O.GUALBERTO 5/23/2011
QA APRVL: J.BRODEUR 5/23/2011	MKT APRVL: --	
PROD FAM: MECHANICAL GROUNDING	DRAWING NO: 30015322	REV: D
PROJECT #: --	SIZE: B	SHEET 1 OF 1
DOCUMENT TYPE: SALES		
REL LEVEL: Released		

