

REV	DATE	DESCRIPTION	ECO	BY	CHK
A	08/17/2011 00:00:00 AM	CREATE SALES DRAWING	25397	TS	MA

DRAWING NO. 30018849	CATALOG NUMBER	CONDUCTOR SIZE AWG OR kcmil	FIG. NO.	DIE INDEX	DIMENSIONS			INSTALLATION TOOLING (# OF CRIMPS PER END)	
					B MIN.	L ± .030	O.D.	Y35, Y39, Y750, PAT750, Y46, PAT46	Y644, PAT644 DIELESS
D	YS8C-PULL	#8 STR. CU.	1	49 RED	.78 [20]	1.93 [49]	.27 [7]	U8CRT (2)	1
D	YS6C-PULL	#6 STR. CU.	1	7 OR 374 BLUE	1.09 [28]	2.55 [65]	.29 [7]	U5CRT (2)	1
	YS4C-PULL	#4 STR. CU.	1	8 OR 346 GRAY	1.09 [28]	2.55 [65]	.34 [9]	U4CRT (2)	1
	YS3C-PULL	#3 STR. CU.	1	9 WHITE	1.22 [31]	2.80 [71]	.38 [10]	U3CRT (2)	1
	YS2C-PULL	#2 STR. CU.	2	10 BROWN	1.22 [31]	2.82 [71]	.42 [11]	U2CRT (2)	1
	YS1C-PULL	#1 STR. CU.	2	11 OR 375 GREEN	1.34 [34]	3.07 [78]	.46 [12]	U1CRT-1 (2)	1
	YS25-PULL	1/0 STR. CU.	2	12 OR 348 PINK	1.34 [34]	3.08 [78]	.51 [13]	U25RT (2)	1
	YS26-PULL	2/0 STR. CU.	2	13 BLACK	1.45 [37]	3.30 [84]	.56 [14]	U26RT (2)	1
	YS27-PULL	3/0 STR. CU.	2	14 ORANGE	1.45 [37]	3.30 [84]	.62 [16]	U27RT (2)	1
	YS28-PULL	4/0 STR. CU.	2	15 PURPLE	1.58 [40]	3.57 [91]	.69 [18]	U28RT (2)	1
C	YS29-PULL	250 kcmil CU.	2	16 YELLOW	1.58 [40]	3.58 [91]	.75 [19]	U29RT (2)	1
	YS30-PULL	300 kcmil CU.	2	17 OR 298 WHITE	1.95 [50]	4.34 [110]	.81 [21]	U30RT (2)	1
	YS31-PULL	350 kcmil CU.	2	18 OR 324 RED	1.95 [50]	4.35 [110]	.88 [22]	U31RT (2)	1
	YS32-PULL	400 kcmil CU.	2	19 PR 470 BLUE	2.08 [53]	4.62 [117]	.95 [24]	U32RT (2)	1
	YS34-PULL	500 kcmil CU.	2	20 OR 299 BROWN	2.20 [56]	4.90 [124]	1.06 [27]	U34RT (2)	1
	YS36-PULL	600 kcmil CU.	2	22 OR 472 GREEN	2.63 [67]	5.85 [149]	1.18 [30]	U36RT (2)	1
	YS38-PULL	700 kcmil CU.	2	400 PINK	2.75 [70]	6.09 [155]	1.25 [32]	U38RT (2)	1
	YS39-PULL	750 kcmil CU.	2	24 BLACK	2.82 [72]	6.24 [158]	1.30 [33]	U39RT (2)	1
	YS44-PULL	1000 kcmil CU.	2	27 WHITE	2.94 [75]	6.58 [167]	1.50 [38]	P44RT (2)	1

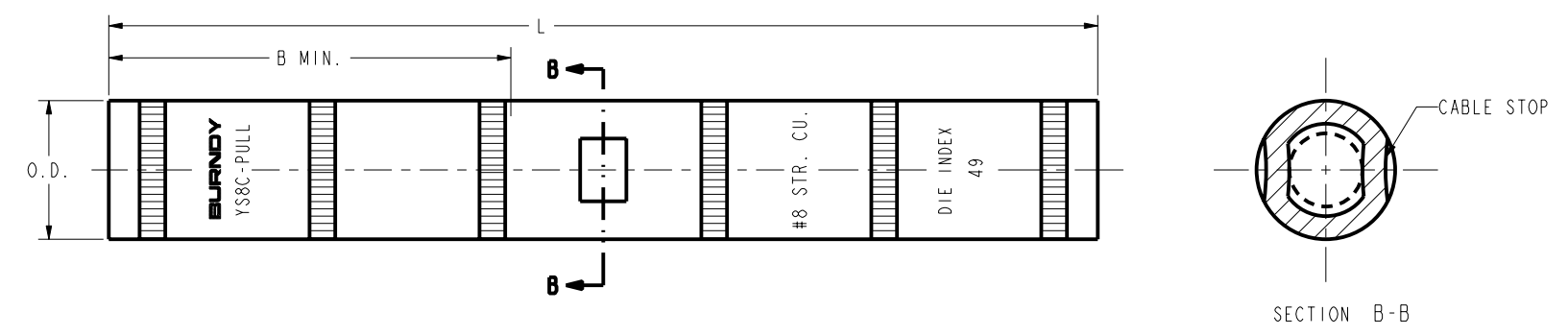


FIGURE 1

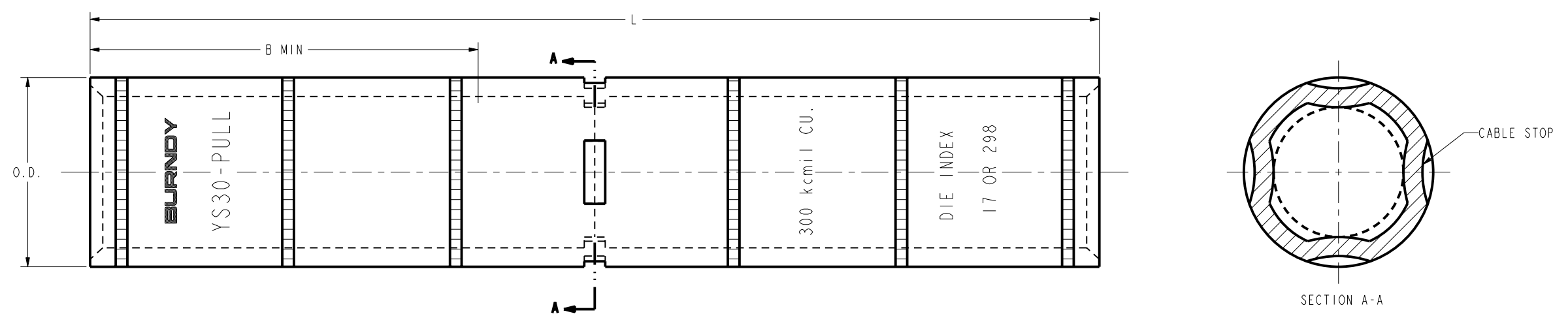


FIGURE 2

- NOTES:
- MATERIAL: COPPER TUBING.
 - DIMENSIONS IN BRACKETS [] ARE IN MILLIMETERS ROUNDED OFF TO THE NEAREST MILLIMETER, UNLESS OTHERWISE NOTED AND ARE FOR REFERENCE ONLY.
 - CATALOG # PAUAP-1 ADAPTOR IS REQUIRED TO USE U-DIES IN Y46 TOOLS.
 - P44RT FOR USE WITH Y46 HYPRESS™ ONLY. PUADP-1 NOT REQUIRED.

TO ORDER BURNDY® PRODUCTS CALL
 UNITED STATES
 1-800-346-4175 (LONDONDERRY, NH)
 CANADA:
 1-800-361-6975 (QUEBEC)
 1-800-387-6487 (ALL OTHER PROVINCES)
 FOR PRODUCT INFO: <http://www.burndy.com>

HYLINK™ SPECIALS	
ITEM NO:	N/A
CAT. NO:	YS--PUL SERIES
DRAWN BY:	T.SATHISH 08/17/2011
CHECKER:	R.ROMAN 09/01/2011
DSN APPVL:	R.ROMAN 09/01/2011
MFG APPVL:	-- --
QA APPVL:	T.WATTS 09/01/2011
MKT APPVL:	J.SYLVIA 09/01/2011
PROD FAM:	CM&R_Compression
PROJECT #:	--
DOCUMENT TYPE:	Sales
REL LEVEL:	Released
DRAWING NO:	30018849
SCALE:	6:1
SIZE:	D
SHEET:	1 OF 1
REV:	A

REV: PE0200