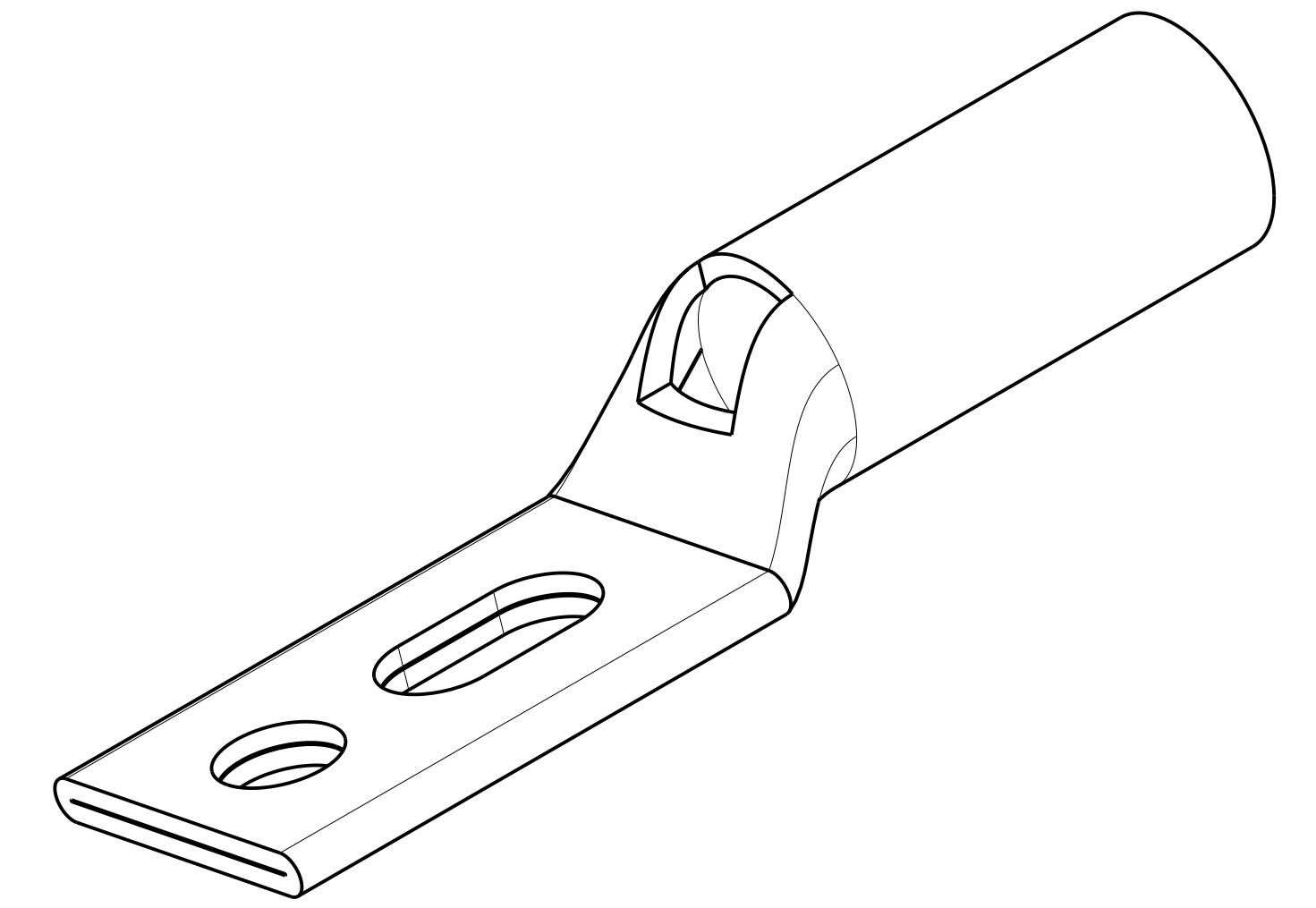
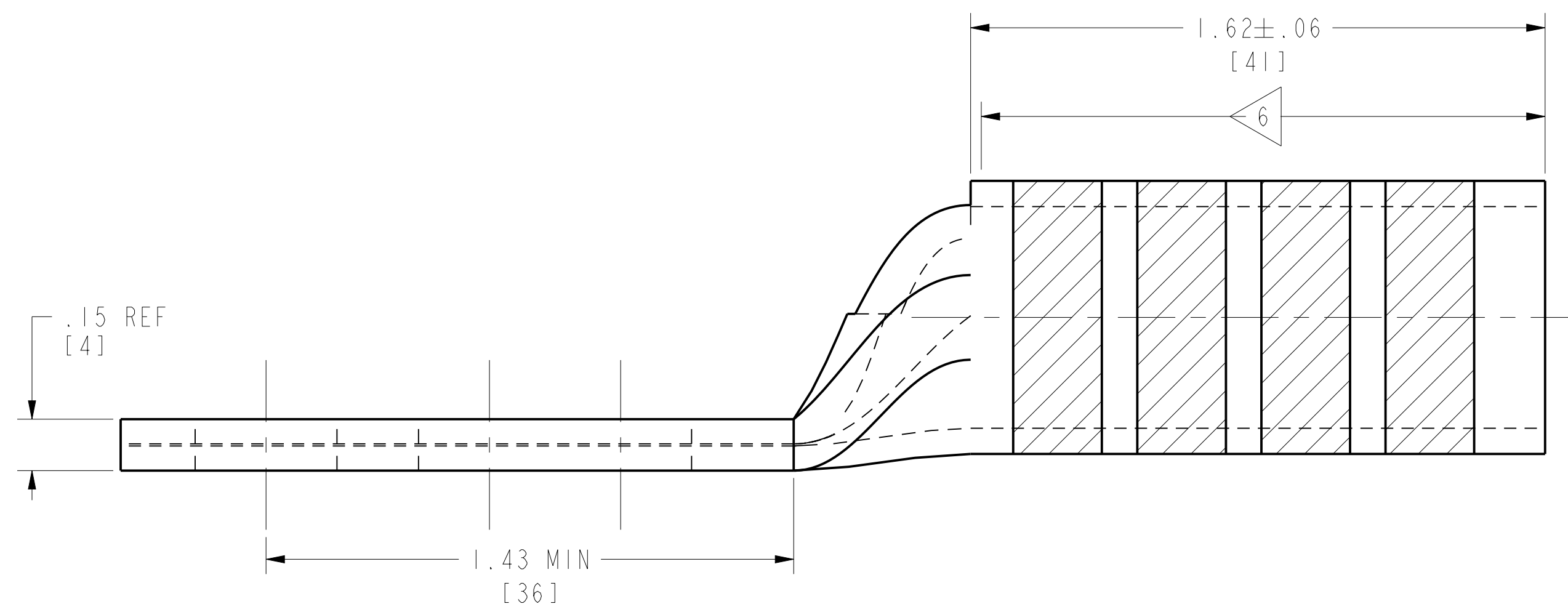
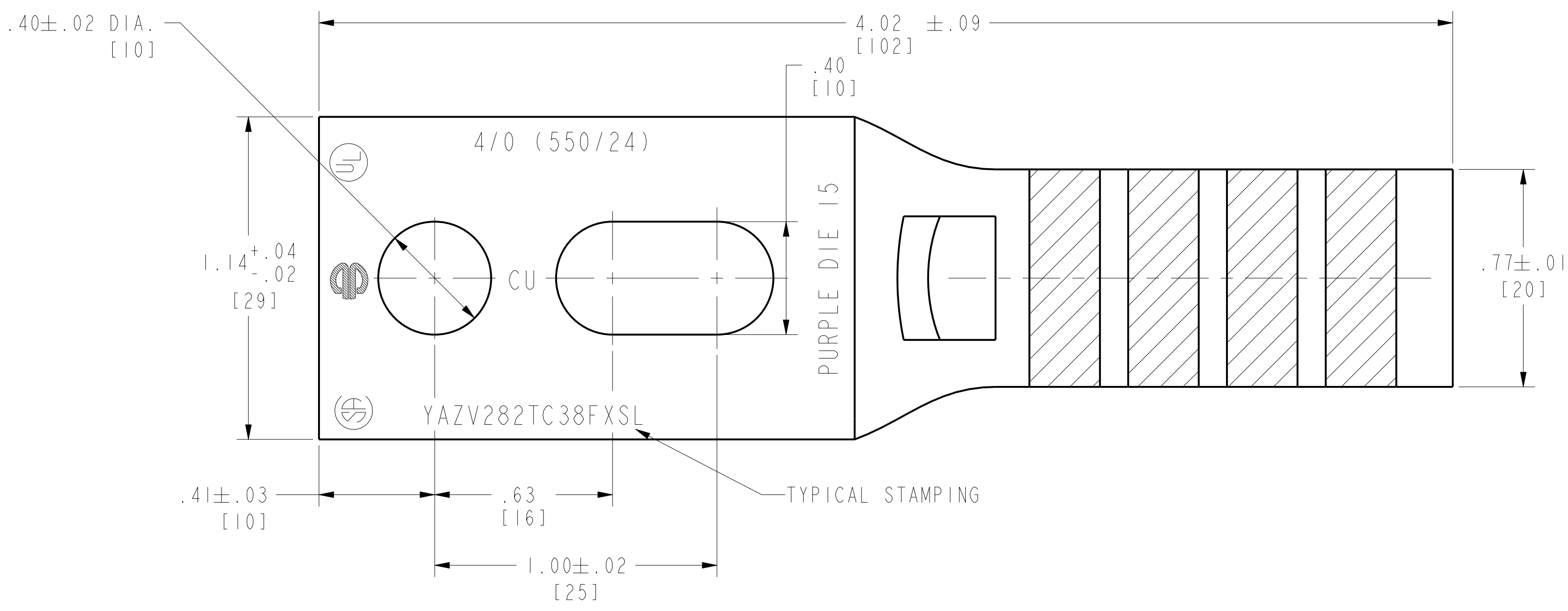


| REV | DATE | DESCRIPTION | ECO | BY | C'H'K. |
|-----|------------------------|------------------|-------|----|--------|
| A | 03/17/2014 00:00:00 AM | DRAWING RELEASED | 35299 | RK | MB |

| CATALOG NO. | CONDUCTOR | | BOLT SIZE | INSTALLATION TOOLING (# CRIMPS) | | | | | | WIRE STRIP LENGTH | |
|-----------------|--------------------|------------|--------------|---------------------------------|------------|-------------------------|-----------------------|--------------------------------|--------------------------|---|----------|
| | FLEX | CODE (AWG) | | DIE INDEX | COLOR CODE | MECHANICAL | HYDRAULIC | | DIE NUMBER (# OF CRIMPS) | | |
| YAZV282TC38FXSL | 4/0 WELD 550/24 | 4/0 AWG | 3/8 [M10] | 15 | PURPLE | MD6, OUR840, MD7-34R | BCT500HS, Y500CTHS | Y35, Y39, Y750, Y46, PAT750 | Y45 | MECHANICAL: MY29-11 (1) Y644HS (1) Y81KFT (2) Y81KFTMBH (2) PAT81KFT-18V (2) | 1-11/16" |



NOTES:

1. MATERIAL: COPPER TUBING.
2. FINISH: TIN PLATED.
3. CATALOG # PT6515 ADAPTOR IS REQUIRED TO USE "U" DIES IN Y45 SERIES TOOLS.
4. CATALOG # PUADP-1 ADAPTOR IS REQUIRED TO USE "U" DIES IN Y46 SERIES TOOLS.
5. DIMENSIONS IN BRACKETS [] ARE IN MILLIMETERS ROUNDED OFF TO THE NEAREST MILLIMETER, UNLESS OTHERWISE NOTED, AND ARE FOR REFERENCE ONLY.
6. CRIMP (# OF CRIMPS PER TABLE) WITHIN THE LENGTH BETWEEN THE INK STAMPED CRIMPING AREA.

| | | | |
|---|--|-----------------------------------|--------------------------------|
| TO ORDER BURNDY® PRODUCTS CALL | | HYLUG™ | |
| UNITED STATES 1-800-346-4175 (LONDONDERRY, NH) | | ITEM NO: 30014830 | CAT. NO: YAZV282TC38FXSL |
| CANADA: 1-800-361-6975 (QUEBEC) 1-800-387-6487 (ALL OTHER PROVINCES) | | DRAWN BY: T.SATHISH 10/14/2011 | CHECKER: K.BOUTIN 04/02/2014 |
| FOR PRODUCT INFO: http://www.burndy.com | | DSN APPVL: K.BOUTIN 04/02/2014 | MFG APPVL: -- |
| | | QA APPVL: C.KOWCALCZYK 04/02/2014 | MKT APPVL: J.SYLVIA 04/01/2014 |
| | | PROD FAM: CM&R COMPRESSION | DRAWING NO: 30020855 |
| | | PROJECT #: -- | SCALE: 3:1 |
| | | DOCUMENT TYPE: Sales | REV: A |
| | | REL LEVEL: Released | SHEET 1 OF 1 |

REV: PEC200