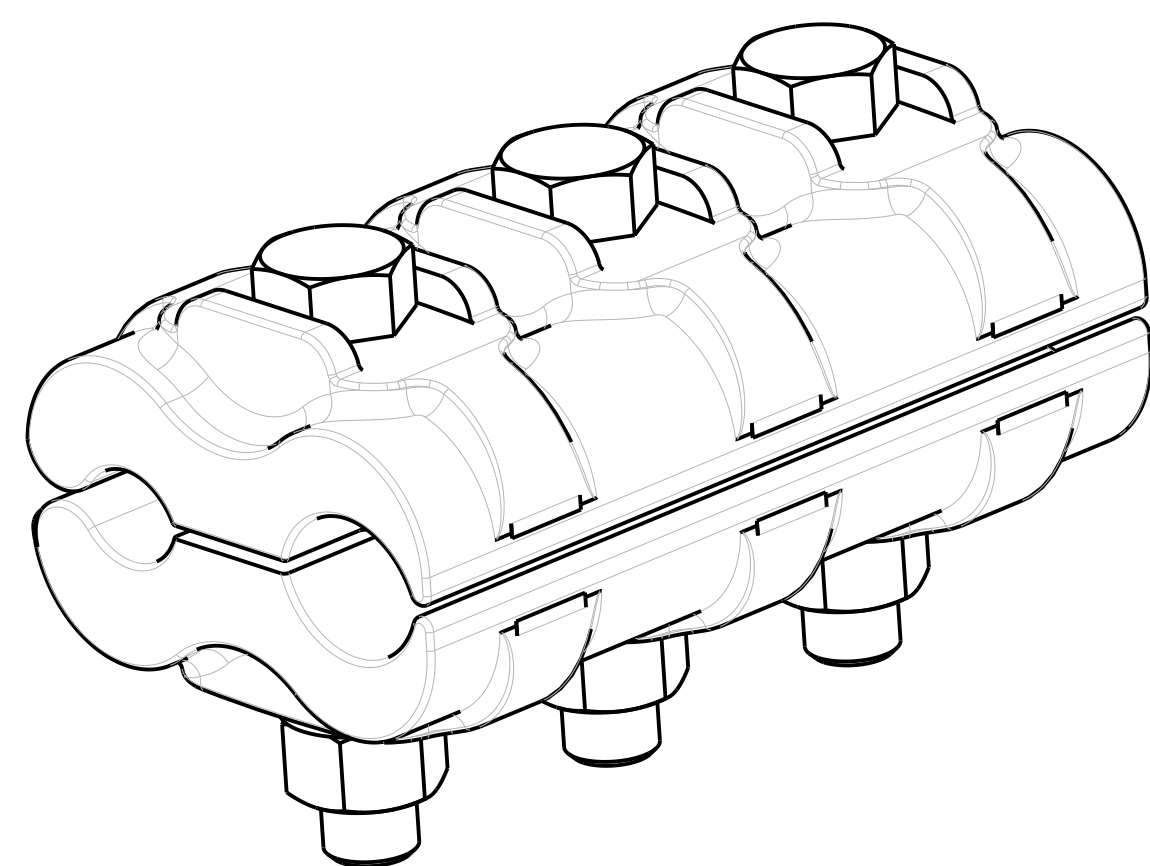
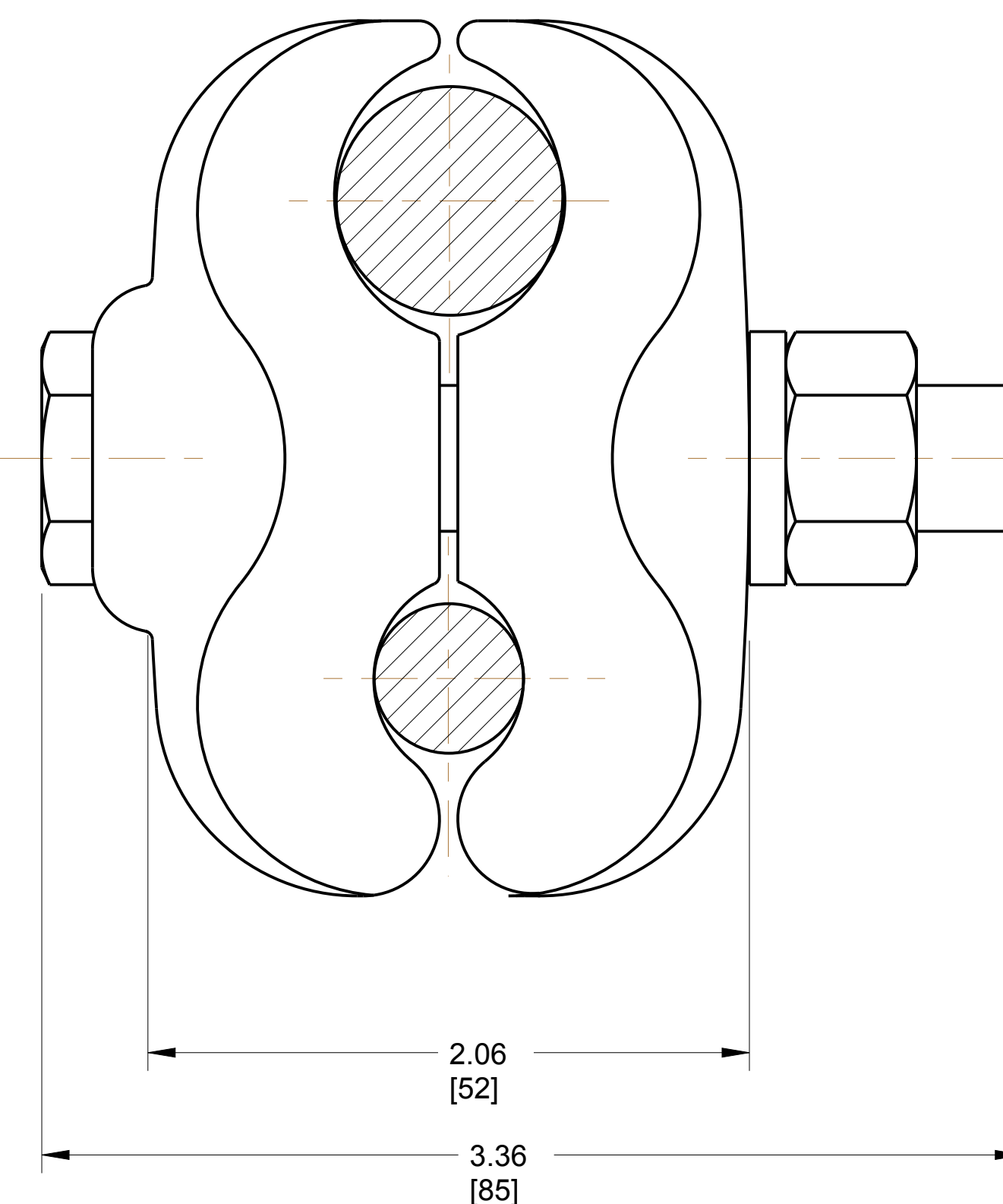
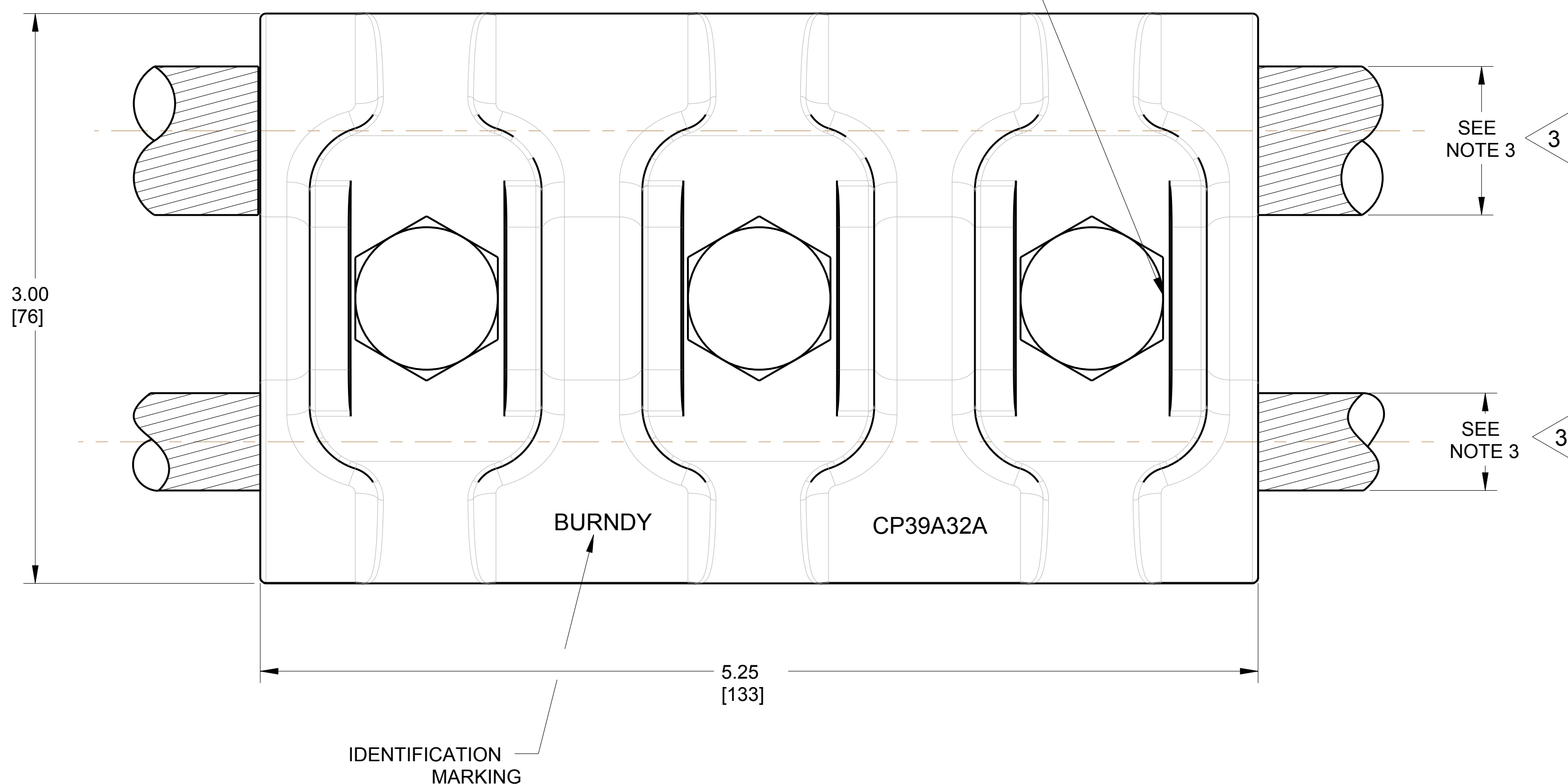


REV	DATE	DESCRIPTION	ECO	BY	CHK.
A	01/27/2012 14:00:00 PM	DRAWING RELEASED	26608	RLB	WZ



SCALE 1:1

1/2" ALUMINUM HEX. HEAD BOLT,  
GALVANIZED STEEL SPLIT LOCK WASHER  
ALUMINUM NUT  
(3 PLACES)



NOTES:

1. MATERIAL: CAST ALUM. ALLOY.
2. DIMENSIONS IN [ ] BRACKETS ARE IN MILLIMETERS, ROUNDED OFF TO THE NEAREST MILLIMETER, UNLESS OTHERWISE NOTED. METRIC DIMENSIONS ARE FOR REFERENCE ONLY.
- 3 ACCOMMODATES: 750 Kcmil (.998 [25] DIA.) & 400 Kcmil (.728 [18] DIA.).
4. NOMINAL BOLT INSTALLATION TORQUE: 300 LBS-IN [34NM] FOR 1/2" HEX. ALUMINUM HARDWARE.

REFERENCE: SD28518-02

TO ORDER BURNDY® PRODUCTS CALL UNITED STATES 1-800-346-4175 (LONDONDERRY, NH)  CANADA: 1-800-361-6975 (QUEBEC) 1-800-387-6487 (ALL OTHER PROVINCES)  FOR PRODUCT INFO: <a href="http://www.burndy.com">http://www.burndy.com</a>		PARALLEL CLAMP	
		ITEM NO: 25016858	CAT. NO: CP39A32A3
DRAWN BY: R. BOISVERT 01/27/12			
CHECKER: --			
DSN APPVL: --			
MFG APPVL: --			
QA APPVL: --		MKT APPVL: --	
PROD FAM: --		DRAWING NO	REV
PROJECT #: --		30024003	A
DOCUMENT TYPE: Sales		SHEET 1 OF 1	
REL LEVEL: Released		SCALE: 1:1	

REV: PE0200