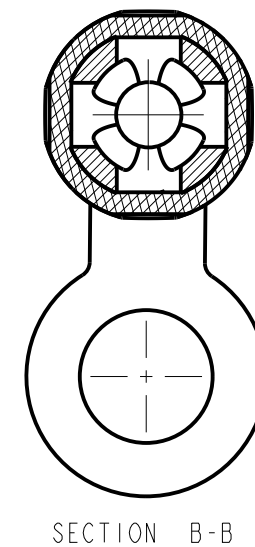
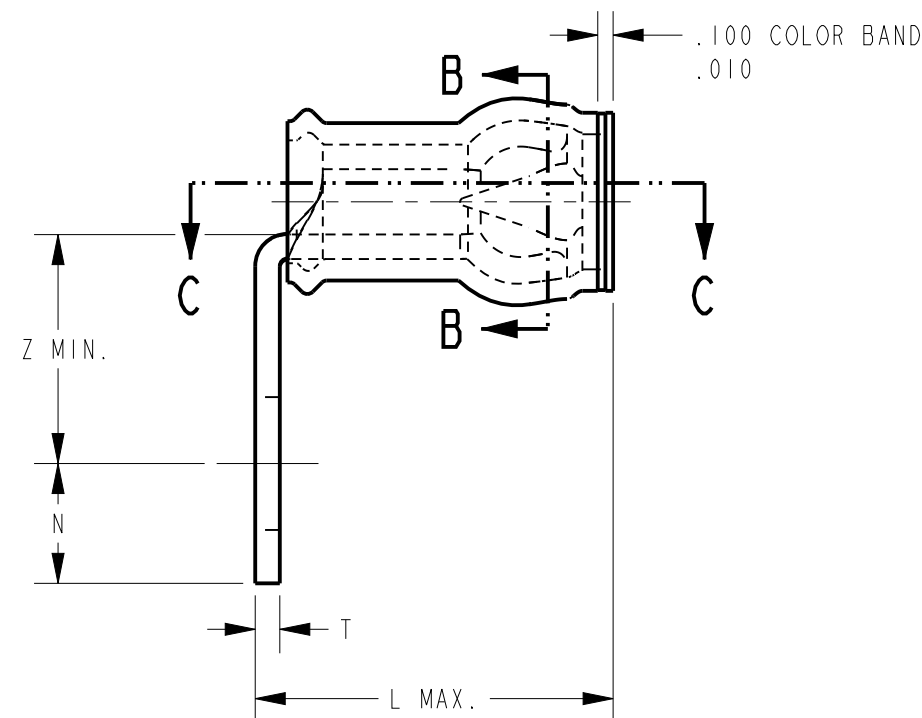
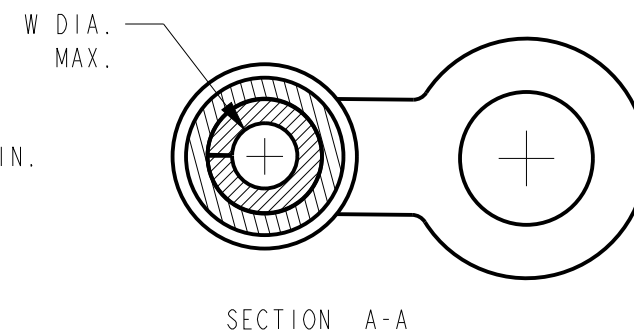
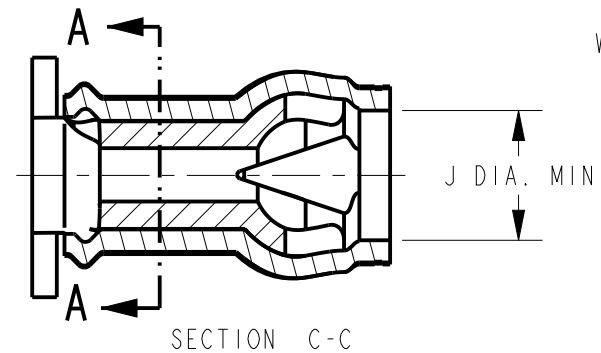
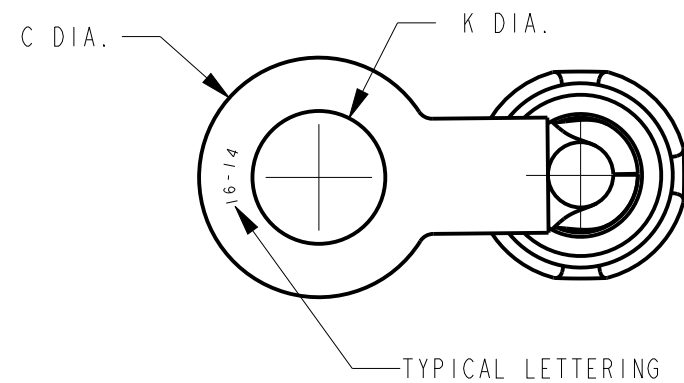


CABLE DATA																	INSTALLATION TOOLING							
SIZE	STRANDING	MAX. CONDUCT DIA.	INS. DIA. RANGE		STUD SIZE	"C" DIA.		"K" DIA.		N		T		Z MIN.	J DIA. MIN.	W DIA. MAX.	L MAX.	COLOR OF INSULATION SLEEVE	COLOR OF SUPPORT BUSHING	STRIP LENGTH	MAX. WEIGHT IN GRAMS	HAND POWERED TOOLS	CRIMP DIES FOR TFM MACHINE	CRIMP DIE INSERT FOR SME MACHINE
			MIN.	MAX.		MAX.	MIN.	MAX.	MIN.	MAX.	MIN.													
#14	(19X27)	.073 [1.85]	.089 [2.26]	.155 [3.93]	6-8	.317 [8.05]	.307 [7.79]	.178 [4.52]	.168 [4.26]	.176 [4.47]	.136 [3.45]	.035 [.88]	.029 [.73]	.281 [7.13]	.156 [3.96]	.088 [2.23]	.490 [12.20]	BLUE	NONE	.28 [7.11]	1.10	RATCHET: M8ND WITH NI4HET-25VI OR NI0ET-9 OR NI4HET-15 DIE MR8-33T-1 (NO EXTRA DIES REQUIRED) OR NON RATCHET: Y10D Y10-22	DFM9DI	SI4HET-3



NOTES:

- MATERIAL: SLEEVE - NYLON
TERMINAL - COPPER
- FINISH : TERMINAL-TIN PLATED.
- M8ND HANDTOOL INSTALLATION DIE IS NI4HET25-VI.
- DIMENSIONS IN BRACKETS [] ARE IN MILLIMETERS, UNLESS OTHERWISE NOTED. METRIC DIMENSIONS ARE FOR REFERENCE ONLY.

- CATALOG NO. YAEI4N1BOX90 DENOTES A JAR PACKAGE OF 100 PCS.
CATALOG NO. YAEI4N190 DENOTES A BULK PACKAGE OF 1000 PCS.

TO ORDER BURNDY® PRODUCTS CALL
 UNITED STATES:
 1-800-346-4175 (LONDONDERRY, NH)
 CANADA:
 1-800-361-6975 (QUEBEC)
 1-800-387-6487 (ALL OTHER PROVINCES)
 FOR PRODUCT INFO: <http://www.burndy.com>

INSULUG™ FOR THIN WALL INSULATED CABLE	
ITEM NO: 30021530	
CAT. NO: YAEI4N1BOX90	
DRAWN BY: B.SURESH BABU 02/16/12	
CHECKER: E.MARTIN 05/30/12	
DSN APPVL: E.MARTIN 05/30/12	
MFG APPVL: M.BAILLY 05/30/12	
QA APPVL: C.ACKERMAN 06/06/12	
MKT APPVL: S.GALE 05/30/12	
PROD FAM: SMALL COMPRESSION	SCALE: 4:1
PROJECT #: --	DRAWING NO
DOCUMENT TYPE: Sales	30024964
REL LEVEL: Released	SHEET 1 OF 1

REV.	DATE	DESCRIPTION	ECO	BY	C/H/K.
B	2019-01-20 23:00:00 EST	UPDATED AS PER MARKUP	50678	YR	VS

REV: PE0200