

FIG. 1

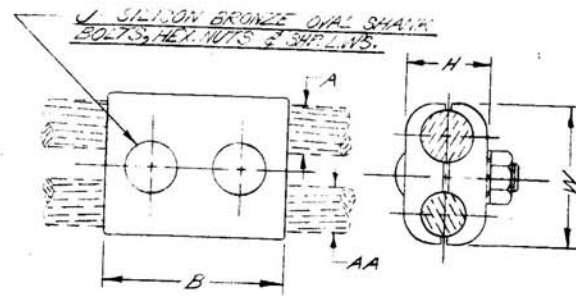


FIG. 2

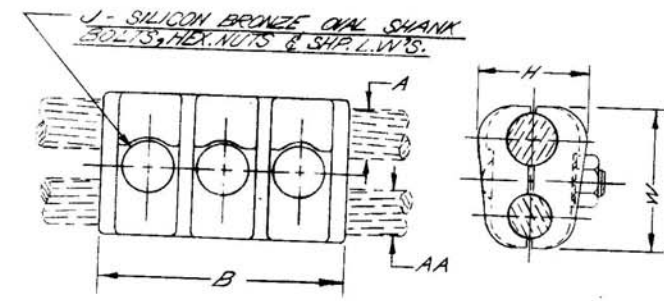


FIG. 3

COPPER CABLES		CATALOG NO.	FIG. NO.	B	H	J	W	REV.
2/0 STR. (.418 DIA.)	1/0 STR. (.373 DIA.)	CP2825-J12	2	2.75	.97	1/2	1.88	○
2/0 STR. (.418 DIA.)	2/0 STR. (.418 DIA.)	CP2626-J12	1	5.00	.94	1/2	1.75	○
4/0 STR. (.528 DIA.)	2/0 STR. (.418 DIA.)	CP2826-J12	1	5.00	1.09	1/2	1.94	○
4/0 STR. (.528 DIA.)	4/0 STR. (.528 DIA.)	CP2828-J12	1	5.00	1.03	1/2	2.19	○
300 MCM (.630 DIA.)	2/0 STR. (.418 DIA.)	CP3026-J12	2	3.00	1.12	1/2	1.94	○
300 MCM (.630 DIA.)	4/0 STR. (.528 DIA.)	CP3028-J12	1	5.00	1.12	1/2	2.12	○
300 MCM (.630 DIA.)	300 MCM (.630 DIA.)	CP3030-J12	1	5.00	1.25	1/2	2.19	○
400 MCM (.728 DIA.)	2/0 STR. (.418 DIA.)	CP3226-J12	2	3.00	1.25	1/2	2.03	○
400 MCM (.728 DIA.)	4/0 STR. (.528 DIA.)	CP3228-J12	1	5.00	1.31	1/2	2.19	○
400 MCM (.728 DIA.)	300 MCM (.630 DIA.)	CP3230-J12	1	5.00	1.44	1/2	2.31	○
400 MCM (.728 DIA.)	400 MCM (.728 DIA.)	CP3232-J12	1	5.00	1.44	1/2	2.56	○
500 MCM (.814 DIA.)	2/0 STR. (.418 DIA.)	CP3426-J12	2	3.00	1.38	1/2	2.12	○
500 MCM (.814 DIA.)	4/0 STR. (.528 DIA.)	CP3428-J12	1	5.00	1.44	1/2	2.28	○
500 MCM (.814 DIA.)	300 MCM (.630 DIA.)	CP3430-J12	1	5.00	1.50	1/2	2.41	○
500 MCM (.814 DIA.)	400 MCM (.728 DIA.)	CP3432-J12	1	5.00	1.56	1/2	2.50	○
500 MCM (.814 DIA.)	500 MCM (.814 DIA.)	CP3434	1	5.00	1.46	1/2	2.50	○
600 MCM (.893 DIA.)	2/0 STR. (.418 DIA.)	CP3626-J12	2	3.00	1.52	1/2	2.25	○
600 MCM (.893 DIA.)	4/0 STR. (.528 DIA.)	CP3628-J12	1	5.00	1.53	1/2	2.38	○
600 MCM (.893 DIA.)	300 MCM (.630 DIA.)	CP3630-J12	1	5.00	1.66	1/2	2.47	○
600 MCM (.893 DIA.)	400 MCM (.728 DIA.)	CP3632-J12	1	5.00	1.66	1/2	2.56	○
600 MCM (.893 DIA.)	500 MCM (.814 DIA.)	CP3634	1	5.00	1.66	1/2	2.59	○
600 MCM (.893 DIA.)	600 MCM (.893 DIA.)	CP3636	3	5.00	1.78	1/2	2.75	○
700 MCM (.964 DIA.)	2/0 STR. (.418 DIA.)	CP3826-J12	2	3.00	1.53	1/2	2.25	○
700 MCM (.964 DIA.)	4/0 STR. (.528 DIA.)	CP3828-J12	1	5.00	1.59	1/2	2.44	○
700 MCM (.964 DIA.)	300 MCM (.630 DIA.)	CP3830-J12	1	5.00	1.72	1/2	2.53	○
700 MCM (.964 DIA.)	400 MCM (.728 DIA.)	CP3832-J12	1	5.00	1.72	1/2	2.62	○
700 MCM (.964 DIA.)	500 MCM (.814 DIA.)	CP3834	1	5.00	1.72	1/2	2.66	○
700 MCM (.964 DIA.)	600 MCM (.893 DIA.)	CP3836	3	5.00	1.84	1/2	2.81	○
700 MCM (.964 DIA.)	700 MCM (.964 DIA.)	CP3838	3	5.00	1.97	1/2	2.88	○
800 MCM (1.031 DIA.)	4/0 STR. (.528 DIA.)	CP4028-J12	1	5.00	1.66	1/2	2.50	○
800 MCM (1.031 DIA.)	300 MCM (.630 DIA.)	CP4030-J12	1	5.00	1.78	1/2	2.59	○
800 MCM (1.031 DIA.)	400 MCM (.728 DIA.)	CP4032-J12	1	5.00	1.78	1/2	2.69	○
800 MCM (1.031 DIA.)	500 MCM (.814 DIA.)	CP4034	1	5.00	1.78	1/2	2.72	○
800 MCM (1.031 DIA.)	600 MCM (.893 DIA.)	CP4036	3	5.00	1.91	1/2	2.88	○
800 MCM (1.031 DIA.)	700 MCM (.964 DIA.)	CP4038	3	5.00	2.03	1/2	2.94	○
800 MCM (1.031 DIA.)	800 MCM (1.031 DIA.)	CP4040	3	5.00	2.03	1/2	3.00	○
1000 MCM (1.152 DIA.)	4/0 STR. (.528 DIA.)	CP4428-J12	1	5.00	1.78	1/2	2.62	○
1000 MCM (1.152 DIA.)	300 MCM (.630 DIA.)	CP4430-J12	1	5.00	1.91	1/2	2.72	○
1000 MCM (1.152 DIA.)	400 MCM (.728 DIA.)	CP4432-J12	1	5.00	1.91	1/2	2.81	○
1000 MCM (1.152 DIA.)	500 MCM (.814 DIA.)	CP4434	1	5.00	1.97	1/2	2.84	○
1000 MCM (1.152 DIA.)	600 MCM (.893 DIA.)	CP4436	3	5.00	2.03	1/2	3.00	○
1000 MCM (1.152 DIA.)	700 MCM (.964 DIA.)	CP4438	3	5.00	2.16	1/2	3.06	○
1000 MCM (1.152 DIA.)	800 MCM (1.031 DIA.)	CP4440	3	5.00	2.16	1/2	3.12	○
1000 MCM (1.152 DIA.)	1000 MCM (1.152 DIA.)	CP4444	3	5.00	2.06	1/2	3.34	○
1250 MCM (1.289 DIA.)	4/0 STR. (.528 DIA.)	CP4528-J12	1	5.00	2.00	1/2	2.75	○
1250 MCM (1.289 DIA.)	300 MCM (.630 DIA.)	CP4530-J12	1	5.00	2.12	1/2	2.88	○
1250 MCM (1.289 DIA.)	400 MCM (.728 DIA.)	CP4532-J12	1	5.00	2.12	1/2	2.97	○
1250 MCM (1.289 DIA.)	500 MCM (.814 DIA.)	CP4534	1	5.00	2.19	1/2	3.00	○
1250 MCM (1.289 DIA.)	600 MCM (.893 DIA.)	CP4536	3	5.00	2.19	1/2	3.12	○
1250 MCM (1.289 DIA.)	700 MCM (.964 DIA.)	CP4538	3	5.00	2.28	1/2	3.19	○
1250 MCM (1.289 DIA.)	800 MCM (1.031 DIA.)	CP4540	3	5.00	2.28	1/2	3.25	○
1250 MCM (1.289 DIA.)	1000 MCM (1.152 DIA.)	CP4544	3	5.00	2.38	1/2	3.38	○

COPPER CABLES		CATALOG NO.	FIG. NO.	B	H	J	W	REV.
1250 MCM (1.289 DIA.)	1250 MCM (1.289 DIA.)	CP4545	3	5.00	2.38	1/2	3.59	○
1500 MCM (1.412 DIA.)	4/0 STR. (.528 DIA.)	CP4628-J12	1	5.00	2.09	1/2	2.88	○
1500 MCM (1.412 DIA.)	300 MCM (.630 DIA.)	CP4630-J12	1	5.00	2.25	1/2	3.00	○
1500 MCM (1.412 DIA.)	400 MCM (.728 DIA.)	CP4632-J12	1	5.00	2.25	1/2	3.09	○
1500 MCM (1.412 DIA.)	500 MCM (.814 DIA.)	CP4634	1	5.00	2.28	1/2	3.09	○
1500 MCM (1.412 DIA.)	600 MCM (.893 DIA.)	CP4636	3	5.00	2.28	1/2	3.25	○
1500 MCM (1.412 DIA.)	700 MCM (.964 DIA.)	CP4638	3	5.00	2.41	1/2	3.31	○
1500 MCM (1.412 DIA.)	800 MCM (1.031 DIA.)	CP4640	3	5.00	2.41	1/2	3.38	○
1500 MCM (1.412 DIA.)	1000 MCM (1.152 DIA.)	CP4644	3	5.00	2.06	1/2	3.66	○
1500 MCM (1.412 DIA.)	1250 MCM (1.289 DIA.)	CP4645	3	5.00	2.50	1/2	3.59	○
1500 MCM (1.412 DIA.)	1500 MCM (1.412 DIA.)	CP4646	3	6.00	2.62	5/8	3.97	○
1750 MCM (1.527 DIA.)	4/0 STR. (.528 DIA.)	CP4728-J12	1	5.00	2.22	1/2	3.00	○
1750 MCM (1.527 DIA.)	300 MCM (.630 DIA.)	CP4730-J12	1	5.00	2.34	1/2	3.09	○
1750 MCM (1.527 DIA.)	400 MCM (.728 DIA.)	CP4732-J12	1	5.00	2.34	1/2	3.19	○
1750 MCM (1.527 DIA.)	500 MCM (.814 DIA.)	CP4734	1	5.00	2.41	1/2	3.22	○
1750 MCM (1.527 DIA.)	600 MCM (.893 DIA.)	CP4736	3	5.00	2.41	1/2	3.38	○
1750 MCM (1.527 DIA.)	700 MCM (.964 DIA.)	CP4738	3	5.00	2.53	1/2	3.44	○
1750 MCM (1.527 DIA.)	800 MCM (1.031 DIA.)	CP4740	3	5.00	2.59	1/2	3.50	○
1750 MCM (1.527 DIA.)	1000 MCM (1.152 DIA.)	CP4744	3	5.00	2.59	1/2	3.62	○
1750 MCM (1.527 DIA.)	1250 MCM (1.289 DIA.)	CP4745	3	5.00	2.59	1/2	3.81	○
1750 MCM (1.527 DIA.)	1500 MCM (1.412 DIA.)	CP4746	3	6.00	2.72	5/8	4.06	○
1750 MCM (1.527 DIA.)	1750 MCM (1.527 DIA.)	CP4747	3	6.00	2.84	5/8	4.25	○
2000 MCM (1.631 DIA.)	4/0 STR. (.528 DIA.)	CP4828-J12	1	5.00	2.31	1/2	3.09	○
2000 MCM (1.631 DIA.)	300 MCM (.630 DIA.)	CP4830-J12	1	5.00	2.47	1/2	3.22	○
2000 MCM (1.631 DIA.)	400 MCM (.728 DIA.)	CP4832-J12	1	5.00	2.47	1/2	3.31	○
2000 MCM (1.631 DIA.)	500 MCM (.814 DIA.)	CP4834	1	5.00	2.50	1/2	3.34	○
2000 MCM (1.631 DIA.)	600 MCM (.893 DIA.)	CP4836	3	5.00	2.50	1/2	3.47	○
2000 MCM (1.631 DIA.)	700 MCM (.964 DIA.)	CP4838	3	5.00	2.62	1/2	3.53	○
2000 MCM (1.631 DIA.)	800 MCM (1.031 DIA.)	CP4840	3	5.00	2.69	1/2	3.62	○
2000 MCM (1.631 DIA.)	1000 MCM (1.152 DIA.)	CP4844	3	5.00	2.69	1/2	3.75	○
2000 MCM (1.631 DIA.)	1250 MCM (1.289 DIA.)	CP4845	3	5.00	2.69	1/2	3.94	○
2000 MCM (1.631 DIA.)	1500 MCM (1.412 DIA.)	CP4846	3	6.00	2.81	5/8	4.19	○
2000 MCM (1.631 DIA.)	1750 MCM (1.527 DIA.)	CP4847	3	6.00	2.94	5/8	4.34	○
2000 MCM (1.631 DIA.)	2000 MCM (1.631 DIA.)	CP4848	3	6.00	3.06	5/8	4.44	○
600 MCM (.893 DIA.)	1/0 STR. (.373 DIA.)	CP3625-J12	2	3.00	1.52	1/2	2.25	1

NOTE:  
THIS DWG. TO MEET REQUIREMENTS OF CUSTOMERS WHICH SPECIFY A MINIMUM OF 1/2" DIA. HARDWARE.

FOR STD. DESIGN SEE DWG. SA-8893

MATERIAL:-  
CAST COPPER ALLOY 113L

APPROVED: *MM* 9-30-54

SUPERSEDES:- SA-13344

PARALLEL CLAMP

TYPE CP & CP-J12 (TABLE)

DRAWN 9-13-54 M.B.W. CHECKED *CK* 9-24-54

MARK	DATE	REVISION	BY	CHK
2	8-5-54	CAT NO. CP3434 'H' DIM. WAS 1.56 (DC2424)	RHS	MTM
1	2-23-54	CP3625-J12 ADDED (PER M.G.)	T.A.L.	<i>CK</i>

BURNDY

DRAWING NO. REV.

SD31734 2