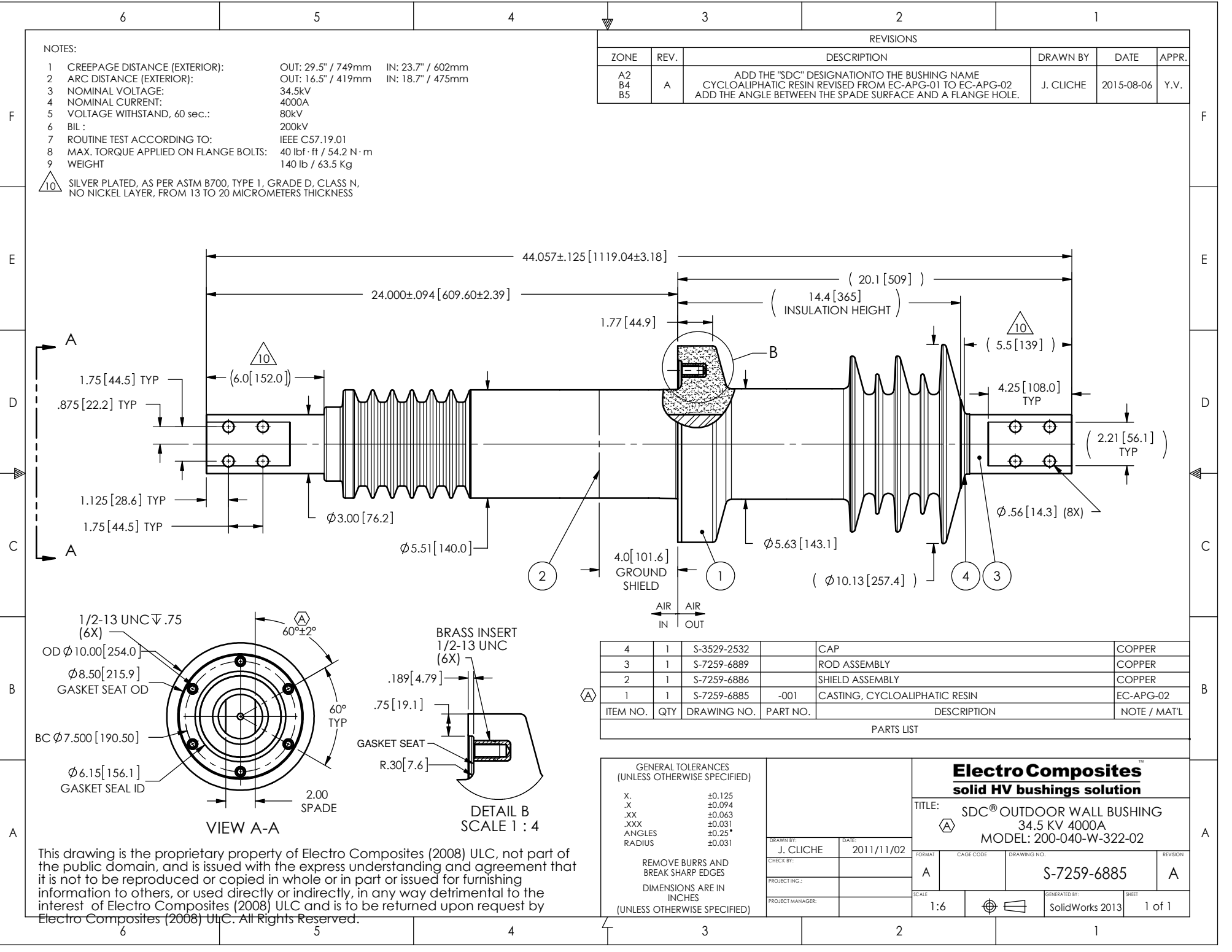


NOTES:

- 1 CREEPAGE DISTANCE (EXTERIOR): OUT: 29.5" / 749mm IN: 23.7" / 602mm
- 2 ARC DISTANCE (EXTERIOR): OUT: 16.5" / 419mm IN: 18.7" / 475mm
- 3 NOMINAL VOLTAGE: 34.5kV
- 4 NOMINAL CURRENT: 4000A
- 5 VOLTAGE WITHSTAND, 60 sec.: 80kV
- 6 BIL : 200kV
- 7 ROUTINE TEST ACCORDING TO: IEEE C57.19.01
- 8 MAX. TORQUE APPLIED ON FLANGE BOLTS: 40 lbf·ft / 54.2 N·m
- 9 WEIGHT 140 lb / 63.5 Kg

△10 SILVER PLATED, AS PER ASTM B700, TYPE 1, GRADE D, CLASS N, NO NICKEL LAYER, FROM 13 TO 20 MICROMETERS THICKNESS

REVISIONS					
ZONE	REV.	DESCRIPTION	DRAWN BY	DATE	APPR.
A2 B4 B5	A	ADD THE "SDC" DESIGNATION TO THE BUSHING NAME CYCLOALIPHATIC RESIN REVISED FROM EC-APG-01 TO EC-APG-02 ADD THE ANGLE BETWEEN THE SPADE SURFACE AND A FLANGE HOLE.	J. CLICHE	2015-08-06	Y.V.



ITEM NO.	QTY	DRAWING NO.	PART NO.	DESCRIPTION	NOTE / MAT'L
4	1	S-3529-2532		CAP	COPPER
3	1	S-7259-6889		ROD ASSEMBLY	COPPER
2	1	S-7259-6886		SHIELD ASSEMBLY	COPPER
1	1	S-7259-6885	-001	CASTING, CYCLOALIPHATIC RESIN	EC-APG-02

PARTS LIST

GENERAL TOLERANCES (UNLESS OTHERWISE SPECIFIED)		Electro Composites solid HV bushings solution	
X.	±0.125		
.X	±0.094	TITLE: SDC® OUTDOOR WALL BUSHING 34.5 KV 4000A MODEL: 200-040-W-322-02	
.XX	±0.063	FORMAT: A	CAGE CODE: S-7259-6885
.XXX	±0.031	DRAWING NO.:	REVISION: A
ANGLES	±0.25°	SCALE: 1:6	GENERATED BY: SolidWorks 2013
RADIUS	±0.031	PROJECT MANAGER:	SHEET: 1 of 1

This drawing is the proprietary property of Electro Composites (2008) ULC, not part of the public domain, and is issued with the express understanding and agreement that it is not to be reproduced or copied in whole or in part or issued for furnishing information to others, or used directly or indirectly, in any way detrimental to the interest of Electro Composites (2008) ULC and is to be returned upon request by Electro Composites (2008) ULC. All Rights Reserved.