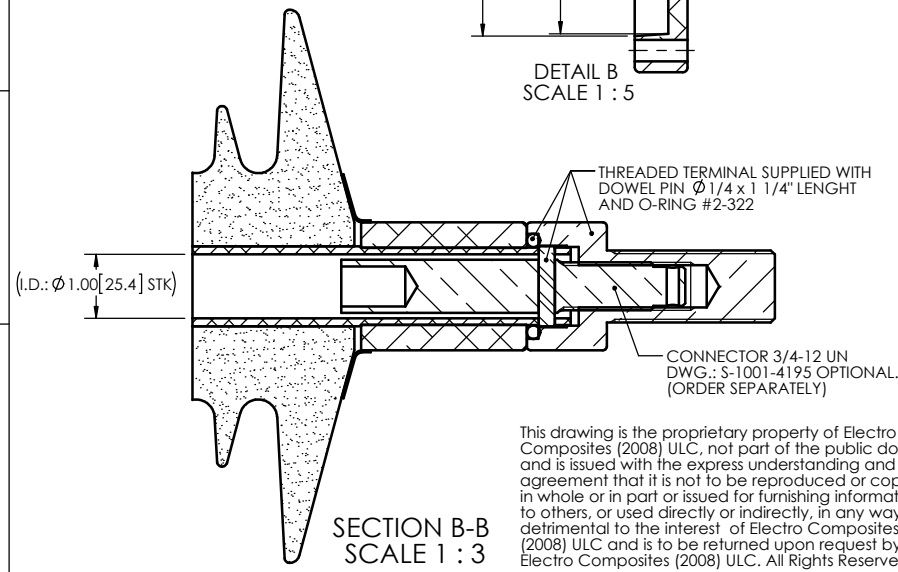
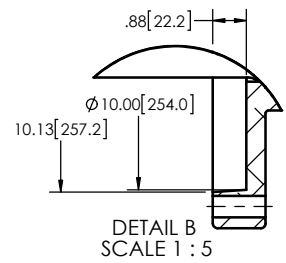
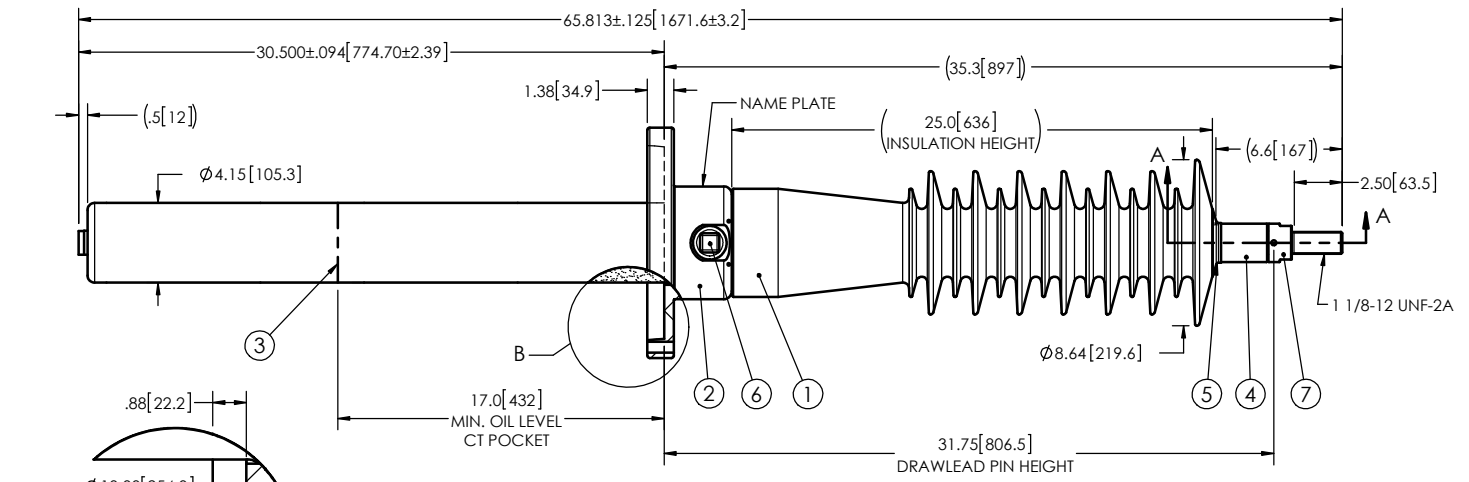
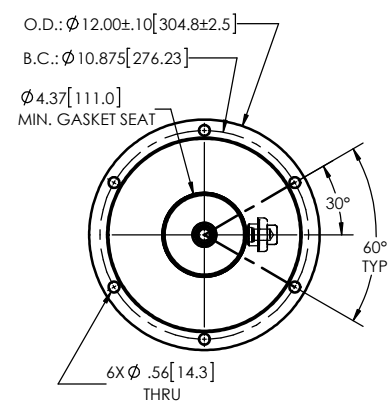


NOTES:

- 1 CREEPAGE DISTANCE: 59.1" / 1501mm
- 2 ARC DISTANCE: 27.1" / 688mm
- 3 NOMINAL VOLTAGE: 69kV
- 4 NOMINAL CURRENT: 400A
- 5 VOLTAGE WITHSTAND, 60 sec.: 160kV
- 6 BIL : 350kV
- 7 ROUTINE TEST ACCORDING TO: IEEE C57.19.01
- 8 MAX. TORQUE APPLIED ON FLANGE BOLTS: 40 lbf·ft / 54.2 N·m
- 9 WEIGHT: 75 lb / 34.0 kg

REVISIONS					
ZONE	REV.	DESCRIPTION	DRAWN BY	DATE	APPR.



This drawing is the proprietary property of Electro Composites (2008) ULC, not part of the public domain, and is issued with the express understanding and agreement that it is not to be reproduced or copied in whole or in part or issued for furnishing information to others, or used directly or indirectly, in any way detrimental to the interest of Electro Composites (2008) ULC and is to be returned upon request by Electro Composites (2008) ULC. All Rights Reserved.

ITEM NO.	QTY	DRAWING NO.	PART NO.	DESCRIPTION	NOTE / MAT'L
7	1	S-4904-4657-0		THREADED TERMINAL KIT	COPPER
6	1	S-1001-2022		CAPACITANCE TAP ASSEMBLY	ALUMINUM
5	1	S-1344-0162-1		CAP	ALUMINUM
4	1	S-4922-4325		TUBE ASSEMBLY	ALUMINUM
3	1	S-4922-4324		SHIELD ASSEMBLY	COPPER
2	1	S-1136-8972		FLANGE	ALUMINUM
1	1	S-1136-8971	-001	CASTING, CYCLOALIPHATIC RESIN	EC-APG-02

PARTS LIST						
GENERAL TOLERANCES (UNLESS OTHERWISE SPECIFIED)			<p><b>Electro Composites</b> solid HV bushings solution</p> <p>TITLE: SDC® BUSHING 69kV, 400A MODEL: 350-004-T-328-04</p>			
X.	±0.125	DRAWN BY: J. CLICHE CHECK BY: PROJECTING: PROJECT MANAGER:				DATE: 2015/09/10 SCALE: 1:10 GENERATED BY: SolidWorks 2013 SHEET: 1 of 1
.X	±0.094					
.XX	±0.063					
.XXX	±0.031					
ANGLES	±0.25°	REMOVE BURRS AND BREAK SHARP EDGES DIMENSIONS ARE IN INCHES (UNLESS OTHERWISE SPECIFIED)				
RADIUS	±0.031	PROJECT MANAGER:				