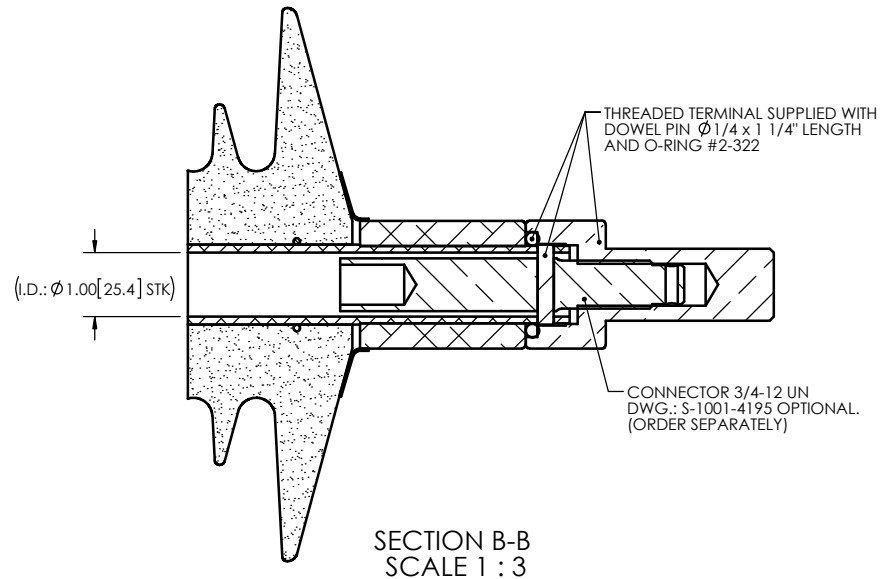
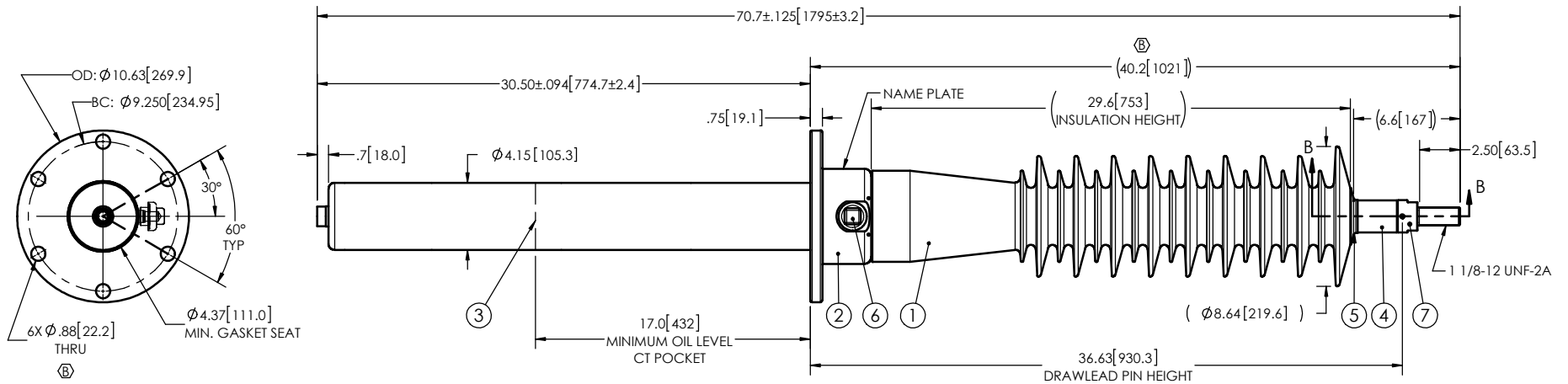


- NOTES:
- | | | |
|---|--------------------------------------|----------------------|
| 1 | CREEPAGE DISTANCE: | 73.0" / 1854 mm |
| 2 | ARC DISTANCE: | 31.8" / 808 mm |
| 3 | NOMINAL VOLTAGE: | 69kV |
| 4 | NOMINAL CURRENT: | 400A |
| 5 | VOLTAGE WITHSTAND, 60 sec.: | 160kV |
| 6 | BIL: | 350kV |
| 7 | ROUTINE TEST ACCORDING TO: | IEEE C57.19.01 |
| 8 | MAX. TORQUE APPLIED ON FLANGE BOLTS: | 40 lbf·ft / 54.2 N·m |
| 9 | WEIGHT: | 78 lb / 35.4 Kg |

REVISIONS					
ZONE	REV.	DESCRIPTION	DRAWN BY	DATE	APPR.
B4 F5 D5 C4 A1	A	UPDATE DRAWING TO ACTUAL STANDARDS TUBE AND CAP CHANGE MATERIAL FOR ALUMINUM ADD THE NOTE #8: MAX TORQUE. THE WEIGHT CHANGE FROM 84 lb TO 78 lb ADD THE "MINIMUM GASKET SEAT" DIMENSION THE THREADED TERMINAL KIT CHANGE FROM S-4915-4369 TO S-4904-4657-0 CHANGE THE SHORT MODEL NUMBER FOR THE LONG ONE	J. CLICHE	2014-09-29	J.V.
C6 E2	B	ADD THE HOLE DIMENSION OF THE FLANGE ADD ONE DECIMAL PLACE TO THE LENGTH ('40' BECOMES 40.2')	J. CLICHE	2014-10-30	J.V.



ITEM NO.	QTY	DRAWING NO.	PART NO.	DESCRIPTION	NOTE / MAT'L
7	1	S-4904-4657-0		THREADED TERMINAL KIT	COPPER
6	1	S-1001-2022		CAPACITANCE TAP ASSEMBLY	ALUMINUM
5	1	S-1344-0162-1		CAP	ALUMINIUM
4	1	S-4915-4368		TUBE ASSEMBLY	ALUMINUM
3	1	S-4915-4367		SHIELD ASSEMBLY	COPPER
2	1	S-4915-4366		FLANGE	ALUMINUM
1	1	S-4915-4362	-001	CASTING, CYCLOALIPHATIC RESIN	EC-APG-02

PARTS LIST

GENERAL TOLERANCES (UNLESS OTHERWISE SPECIFIED)

X.	±0.125
.X	±0.094
.XX	±0.063
.XXX	±0.031
ANGLES	±0.25°
RADIUS	±0.031

REMOVE BURRS AND BREAK SHARP EDGES

DIMENSIONS ARE IN INCHES (UNLESS OTHERWISE SPECIFIED)

DRAWN BY: I. LÉVEILLÉ	DATE: 2007/08/17
CHECK BY:	
PROJECTING:	
PROJECT MANAGER:	

Electro Composites
solid HV bushings solution

TITLE:
SDC® BUSHING 69kV, 400A
MODEL: 350-004-T-339-00

FORMAT A	CAGE CODE	DRAWING NO. S-4915-4362	REVISION B
SCALE 1:10	GENERATED BY: SolidWorks 2013	SHEET 1 of 1	

This drawing is the proprietary property of Electro Composites (2008) ULC, not part of the public domain, and is issued with the express understanding and agreement that it is not to be reproduced or copied in whole or in part or issued for furnishing information to others, or used directly or indirectly, in any way detrimental to the interest of Electro Composites (2008) ULC and is to be returned upon request by Electro Composites (2008) ULC. All Rights Reserved.