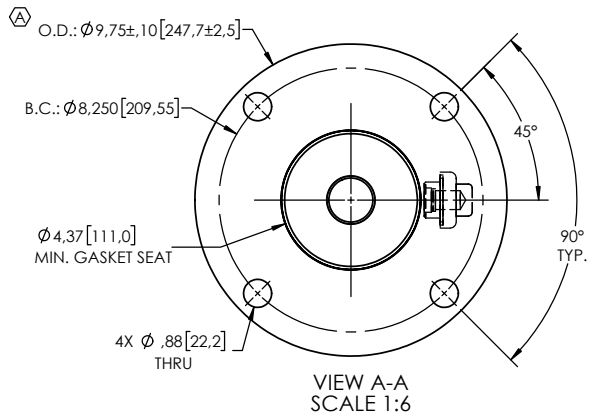
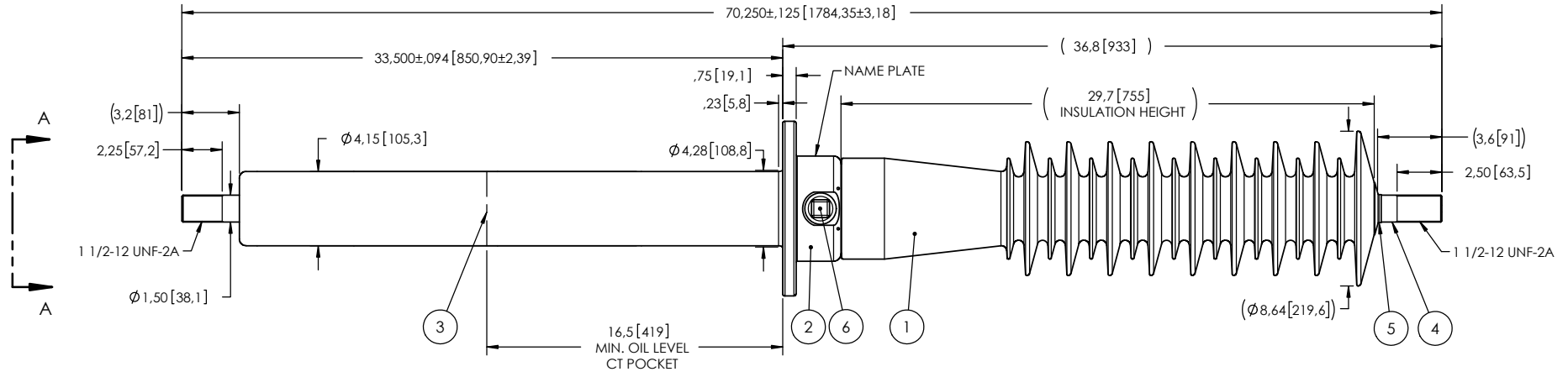


- NOTES:
- | | | |
|---|--------------------------------------|----------------------|
| 1 | CREEPAGE DISTANCE: | 73.4" / 1864mm |
| 2 | ARC DISTANCE: | 32.0" / 813mm |
| 3 | NOMINAL VOLTAGE: | 72.5kV |
| 4 | NOMINAL CURRENT: | 1200A |
| 5 | VOLTAGE WITHSTAND, 60 sec.: | 175kV |
| 6 | BIL: | 350kV |
| 7 | ROUTINE TEST ACCORDING TO: | CSA C88.1-96 |
| 8 | MAX. TORQUE APPLIED ON FLANGE BOLTS: | 70 lbf·ft / 94.9 N·m |
| 9 | WEIGHT: | 110 lb / 49.4 Kg |

REVISIONS					
ZONE	REV.	DESCRIPTION	DRAWN BY	DATE	APPR.
B4 C6	A	SHIELD ASSEMBLY CHANGED FROM S-5158-4682 TO S-6630-10097 INCREASE THE TOLERANCES ON THE FLANGE OUTSIDE DIAMETER.	M. FORGET	2020-03-05	J.V.



This drawing is the proprietary property of Electro Composites (2008) ULC, not part of the public domain, and is issued with the express understanding and agreement that it is not to be reproduced or copied in whole or in part or issued for furnishing information to others, or used directly or indirectly, in any way detrimental to the interest of Electro Composites (2008) ULC and is to be returned upon request by Electro Composites (2008) ULC. All Rights Reserved.

ITEM NO.	QTY	DRAWING NO.	PART NO.	DESCRIPTION	NOTE / MAT'L
6	1	S-1001-2022		CAPACITANCE TAP ASSEMBLY	ALUMINUM
5	1	S-1001-0007		CAP	COPPER
4	1	S-6397-7747		ROD ASSEMBLY	COPPER
3	1	S-6630-10097		SHIELD ASSEMBLY	COPPER
2	1	S-5285-5014		FLANGE	ALUMINUM
1	1	S-1543-9234	-001	CASTING, CYCLOALIPHATIC RESIN	EC-APG-02

PARTS LIST					
GENERAL TOLERANCES (UNLESS OTHERWISE SPECIFIED)			<p>Electro Composites solid HV bushings solution</p> <p>TITLE: SDC® BUSHING 72.5kV, 1200A MODEL: 350-012-B-339-05</p>		
X.	±0.125	DRAWN BY: J. CLICHE DATE: 2016/11/28 CHECK BY: PROJECT MGR: PROJECT MANAGER:			
.X	±0.094				
.XX	±0.063				
.XXX	±0.031				
ANGLES	±0.25°	REMOVE BURRS AND BREAK SHARP EDGES DIMENSIONS ARE IN INCHES (UNLESS OTHERWISE SPECIFIED)	SCALE: 1:9 GENERATOR: SolidWorks 2013 SHEET: 1 of 1		
RADIUS	±0.031				
REMOVE BURRS AND BREAK SHARP EDGES DIMENSIONS ARE IN INCHES (UNLESS OTHERWISE SPECIFIED)			FORMAT: A CAGE CODE: DRAWING NO.: S-1543-9234 REVISION: A		