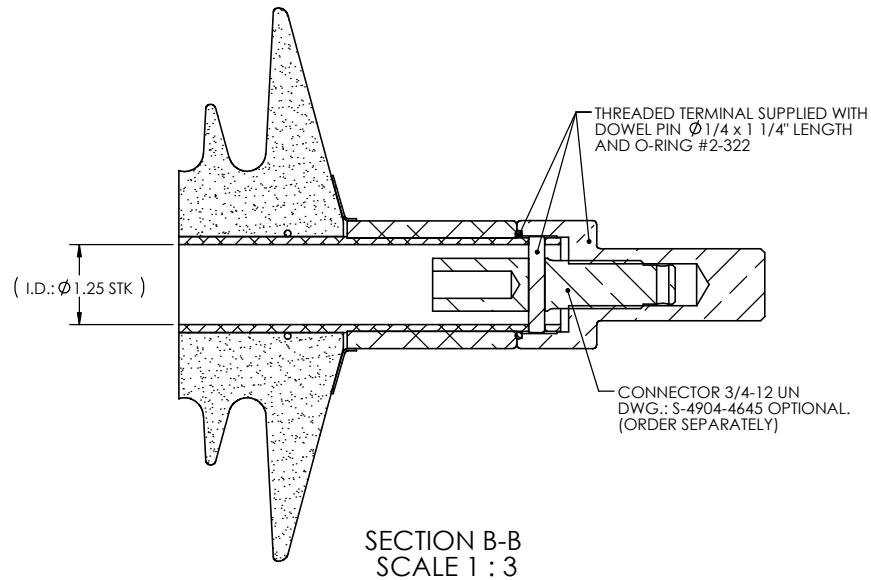
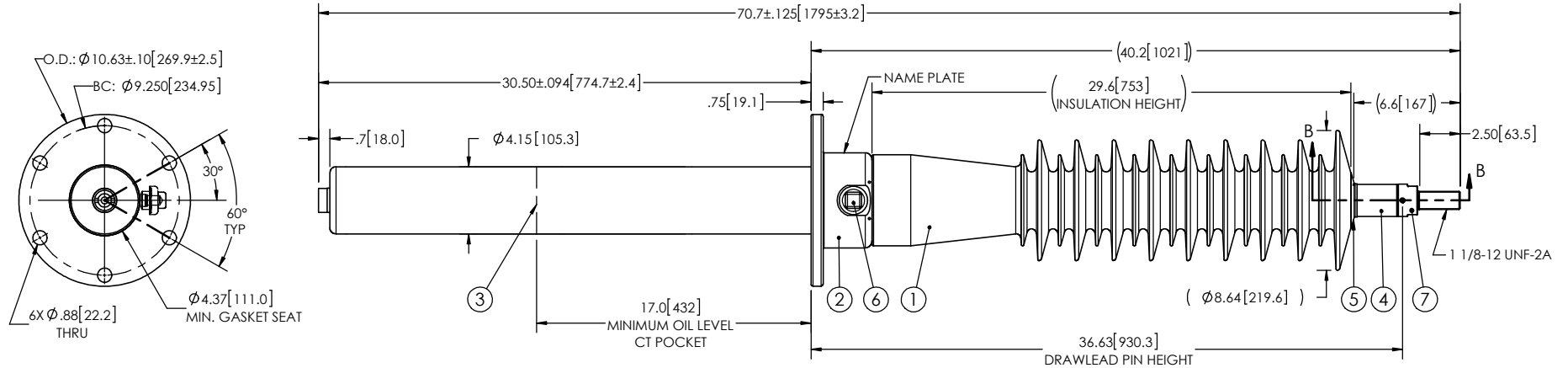


NOTES:

- 1 CREEPAGE DISTANCE: 73.0" / 1854 mm
- 2 ARC DISTANCE: 31.8" / 808 mm
- 3 NOMINAL VOLTAGE: 69kV
- 4 NOMINAL CURRENT: 400A
- 5 VOLTAGE WITHSTAND, 60 sec.: 160kV
- 6 BIL: 350kV
- 7 ROUTINE TEST ACCORDING TO: IEEE C57.19.01
- 8 MAX. TORQUE APPLIED ON FLANGE BOLTS: 40 lbf·ft / 54.2 N·m
- 9 WEIGHT: 76 lb / 34.5 kg

REVISIONS					
ZONE	REV.	DESCRIPTION	DRAWN BY	DATE	APPR.



ITEM NO.	QTY	DRAWING NO.	PART NO.	DESCRIPTION	NOTE / MAT'L
7	1	S-5677-5330-0		THREADED TERMINAL KIT	COPPER
6	1	S-1001-2022		CAPACITANCE TAP ASSEMBLY	ALUMINUM
5	1	S-1344-0162-1		CAP	ALUMINUM
4	1	S-9755-9579		TUBE ASSEMBLY	ALUMINUM
3	1	S-4915-4367		SHIELD ASSEMBLY	COPPER
2	1	S-4915-4366		FLANGE	ALUMINUM
1	1	S-9755-9578	-001	CASTING, CYCLOALIPHATIC RESIN	EC-APG-02

PARTS LIST

GENERAL TOLERANCES (UNLESS OTHERWISE SPECIFIED)

X.	$\pm 0.125$
.X	$\pm 0.094$
.XX	$\pm 0.063$
.XXX	$\pm 0.031$
ANGLES	$\pm 0.25^\circ$
RADIUS	$\pm 0.031$

REMOVE BURRS AND BREAK SHARP EDGES

DIMENSIONS ARE IN INCHES (UNLESS OTHERWISE SPECIFIED)

**Electro Composites**  
solid HV bushings solution

TITLE: SDC<sup>®</sup> BUSHING 69kV, 400A  
MODEL: 350-004-T-339-06

DRAWN BY: M. FORGET DATE: 2018/01/17

CHECK BY:

PROJECTING:

PROJECT MANAGER:

FORMAT: A

CAGE CODE

DRAWING NO. S-9755-9578

REVISION: NR

SCALE: 1:10



GENERATED BY: SolidWorks 2013 SHEET: 1 of 1

This drawing is the proprietary property of Electro Composites (2008) ULC, not part of the public domain, and is issued with the express understanding and agreement that it is not to be reproduced or copied in whole or in part or issued for furnishing information to others, or used directly or indirectly, in any way detrimental to the interest of Electro Composites (2008) ULC and is to be returned upon request by Electro Composites (2008) ULC. All Rights Reserved.