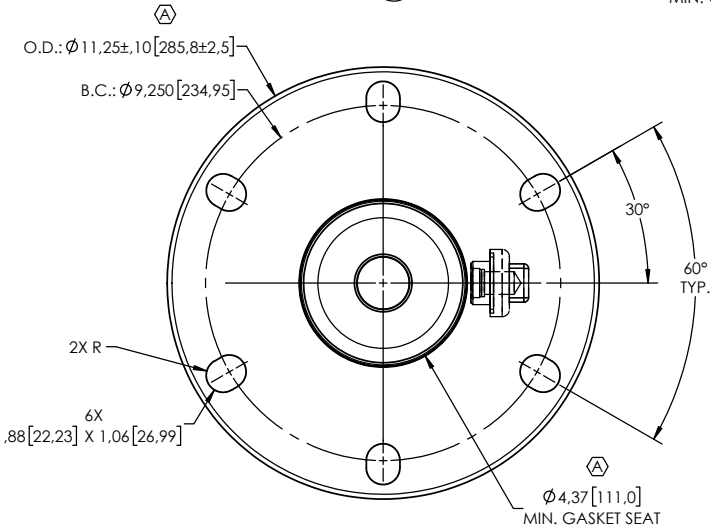
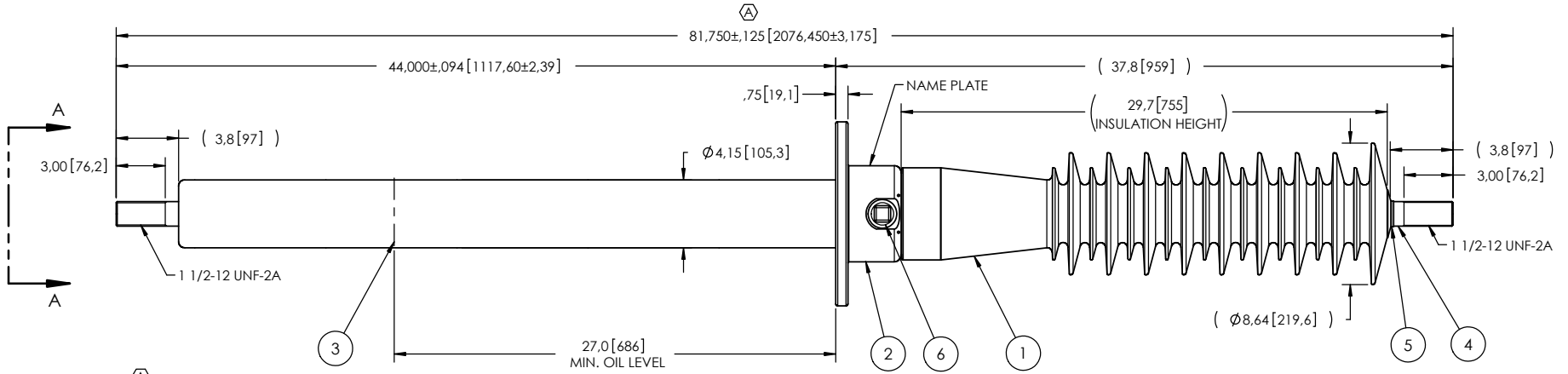


NOTES:

- 1 CREEPAGE DISTANCE: 73.1" / 1858mm
- 2 ARC DISTANCE: 31.8" / 808mm
- 3 NOMINAL VOLTAGE: 69kV
- 4 NOMINAL CURRENT: 1200A
- 5 VOLTAGE WITHSTAND, 60 sec.: 160kV
- 6 BL: 350kV
- 7 ROUTINE TEST ACCORDING TO: IEEE C57.19.01
- 8 MAX. TORQUE APPLIED ON FLANGE BOLTS: 40 lbf·ft / 54.2 N·m
- 9 WEIGHT: 128 lb / 58 kg

RÉVISIONS					
ZONE	REV.	DESCRIPTION	DESSINÉ PAR	DATE	APPR.
F6, C6, A1, A6	A	ADD THE MINIMUM GASKET SEAT DIMENSION. + ADD THE "SDC" DESIGNATION TO THE BUSHING NAME. + INCREASE THE TOLERANCES ON THE FLANGE OUTSIDE DIAMETER. + MODEL # HAS CHANGED: 350-012-T-350-01 WAS E350H-1	A.SAVARD	2021-02-11	J.V.



VIEW A-A
SCALE 1:5

This drawing is the proprietary property of Electro Composites (2008) ULC, not part of the public domain, and is issued with the express understanding and agreement that it is not to be reproduced or copied in whole or in part or issued for furnishing information to others, or used directly or indirectly, in any way detrimental to the interest of Electro Composites (2008) ULC and is to be returned upon request by Electro Composites (2008) ULC. All Rights Reserved.

ITEM NO.	QTY	DRAWING NO.	PART NO.	DESCRIPTION	NOTE / MAT'L
6	1	S-1001-2022		CAPACITANCE TAP ASSEMBLY	ALUMINUM
5	1	S-1001-0007		CAP	COPPER
4	1	S-5067-4558		ROD ASSEMBLY	COPPER
3	1	S-5067-4557		SHIELD ASSEMBLY	COPPER
2	1	S-5067-4556		FLANGE	ALUMINUM
1	1	S-5067-4555	-001	CASTING, CYCLOALIPHATIC RESIN	EC-APG-02

PARTS LIST

GENERAL TOLERANCES (UNLESS OTHERWISE SPECIFIED)

X.	±0.125
.X	±0.094
.XX	±0.063
.XXX	±0.031
ANGLES	±0.25°
RADIUS	±0.031

REMOVE BURRS AND
BREAK SHARP EDGES

DIMENSIONS ARE IN
INCHES
(UNLESS OTHERWISE SPECIFIED)

ElectroComposites™
solid HV bushings solution

TITLE:
SDC® BUSHING 69kV, 1200A
MODEL: 350-012-T-350-01

DRAWN BY: I.LÉVEILLÉ	DATE: 2007/12/04	FORMAT: A	CAGE CODE:	DRAWING NO.: S-5067-4555	REVISION: A
CHECK BY:		SCALE: 1:10	GENERATED BY: SolidWorks 2020	SHEET: 1 of 1	