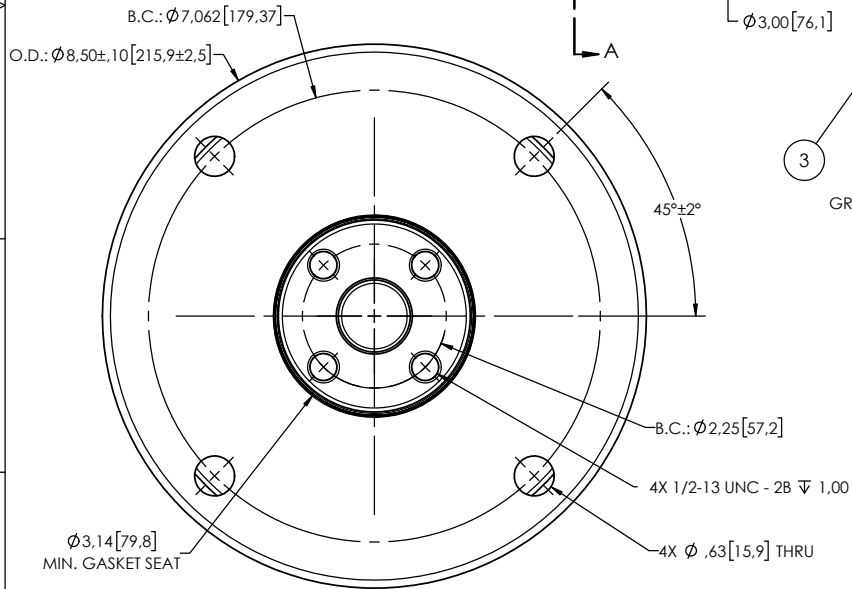
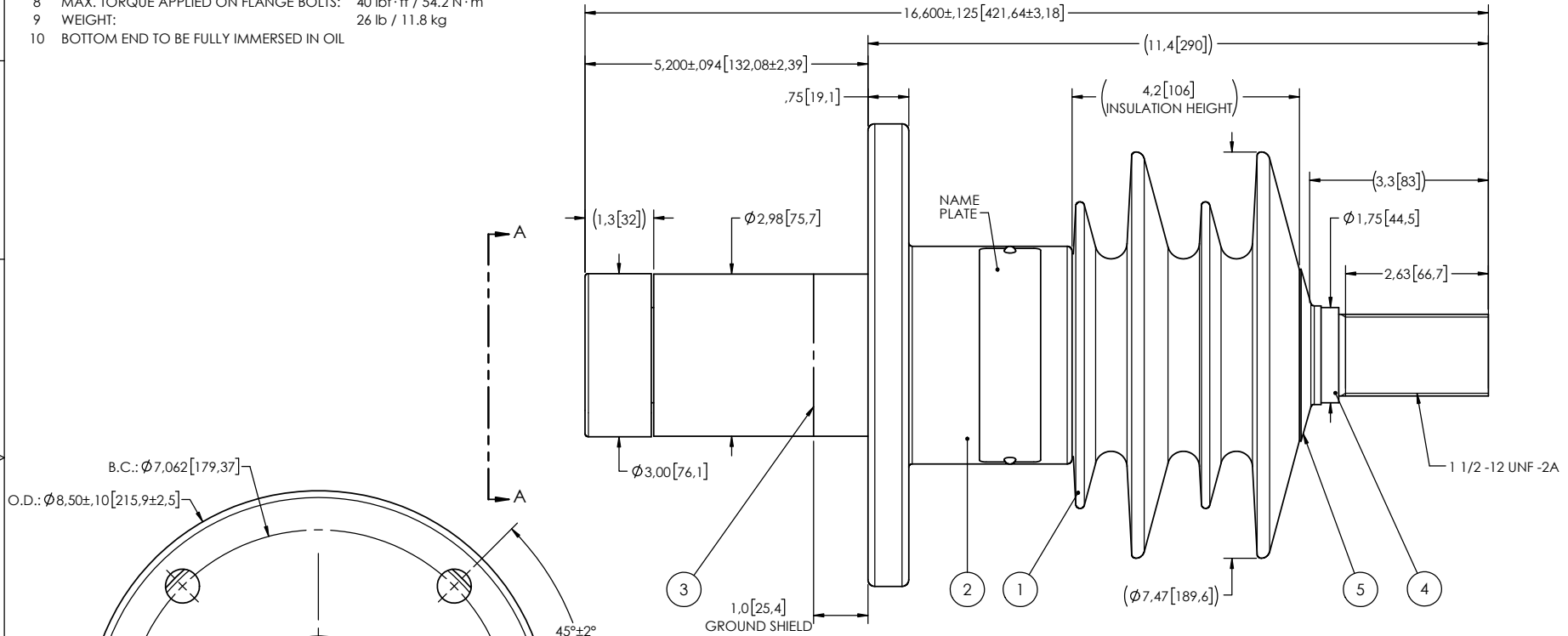


NOTES:

- 1 CREEPAGE DISTANCE: 14.1" / 358mm
- 2 ARC DISTANCE: 6.9" / 174mm
- 3 NOMINAL VOLTAGE: 15kV
- 4 NOMINAL CURRENT: 2000A
- 5 VOLTAGE WITHSTAND, 60 sec.: 50kV
- 6 BIL: 110kV
- 7 ROUTINE TEST ACCORDING TO: IEEE C57.19.01
- 8 MAX. TORQUE APPLIED ON FLANGE BOLTS: 40 lbf · ft / 54.2 N · m
- 9 WEIGHT: 26 lb / 11.8 kg
- 10 BOTTOM END TO BE FULLY IMMERSSED IN OIL

REVISIONS					
ZONE	REV.	DESCRIPTION	DRAWN BY	DATE	APPR.



ITEM NO.	QTY	DRAWING NO.	PART NO.	DESCRIPTION	NOTE / MAT'L
5	1	S-1600-0587-0		CAP	COPPER
4	1	S-4997-4499		ROD ASSEMBLY	COPPER
3	1	S-4997-4498		SHIELD ASSEMBLY	COPPER
2	1	S-1756-10161		FLANGE	ALUMINUM
1	1	S-1756-10160	-001	CASTING, CYCLOALIPHATIC RESIN	EC-APG-02

PARTS LIST					
GENERAL TOLERANCES (UNLESS OTHERWISE SPECIFIED) X. ±0.125 .X ±0.094 .XX ±0.063 .XXX ±0.031 ANGLES ±0.25° RADIUS ±0.031			Electro Composites solid HV bushings solution TITLE: SDC® BUSHING 15kV, 2000A MODEL: 110-020-T-355-02		
REMOVE BURRS AND BREAK SHARP EDGES DIMENSIONS ARE IN INCHES (UNLESS OTHERWISE SPECIFIED)		DRAWN BY: M. FORGET CHECK BY:	DATE: 2020/06/30 PROJECT NO.:	PROJECT MANAGER:	SCALE: 1:3 GENERATED BY: SolidWorks 2020 SHEET: 1 of 1

VIEW A-A
 This drawing is the proprietary property of Electro Composites (2008) ULC, not part of the public domain, and is issued with the express understanding and agreement that it is not to be reproduced or copied in whole or in part or issued for furnishing information to others, or used directly or indirectly, in any way detrimental to the interest of Electro Composites (2008) ULC and is to be returned upon request by Electro Composites (2008) ULC. All Rights Reserved.