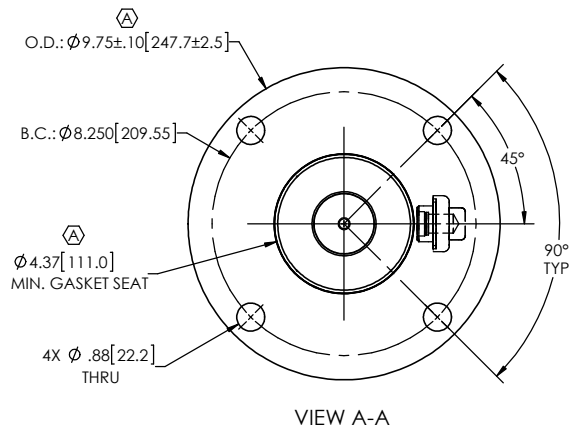
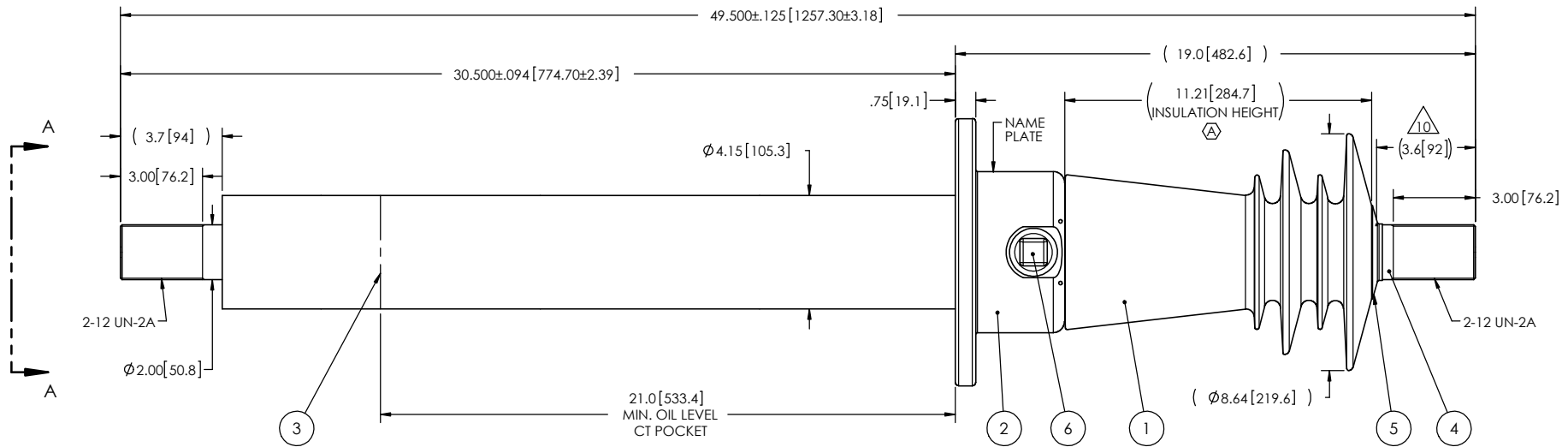


- NOTES:
- 1 CREEPAGE DISTANCE: 21.8" / 554mm
 - 2 ARC DISTANCE: 13.4" / 340mm
 - 3 NOMINAL VOLTAGE: 25kV
 - 4 NOMINAL CURRENT: 2000A
 - 5 VOLTAGE WITHSTAND, 60 sec.: 60kV
 - 6 BIL: 150kV
 - 7 ROUTINE TEST ACCORDING TO: IEEE C57.19.01
 - 8 MAX. TORQUE APPLIED ON FLANGE BOLTS: 40 lbf·ft / 54.2 N·m (A)
 - 9 WEIGHT: 92 lb / 41.7 Kg
 - 10 SILVER PLATED, AS PER ASTM B700, TYPE 1, GRADE D, CLASS N, NO NICKEL LAYER, FROM 13 TO 20 MICROMETERS THICKNESS

REVISIONS					
ZONE	REV.	DESCRIPTION	DRAWN BY	DATE	APPR.
E2 F5 B6 A2 C6 A2	A	GENERAL UPDATE TO THE NEW STANDARDS. ADD THE INSULATION HEIGHT DIMENSION. ADD THE NOTE #8: MAX TORQUE. ADD THE MINIMUM GASKET SEAT DIMENSION. ADD THE "SDC" DESIGNATION TO THE BUSHING NAME. INCREASE THE TOLERANCES ON THE FLANGE OUTSIDE DIAMETER. THE SHORT MODEL NUMBER IS CHANGED FOR THE NEW MODEL NUMBER.	J. CLICHE	2017-06-28	Y.V.



This drawing is the proprietary property of Electro Composites (2008) ULC, not part of the public domain, and is issued with the express understanding and agreement that it is not to be reproduced or copied in whole or in part or issued for furnishing information to others, or used directly or indirectly, in any way detrimental to the interest of Electro Composites (2008) ULC and is to be returned upon request by Electro Composites (2008) ULC. All Rights Reserved.

ITEM NO.	QTY	DRAWING NO.	PART NO.	DESCRIPTION	NOTE / MAT'L
6	1	S-1001-2022		CAPACITANCE TAP ASSEMBLY	ALUMINUM
5	1	S-1344-0162-0		CAP	COPPER
4	1	S-4857-4532		ROD ASSEMBLY	COPPER
3	1	S-4857-4529		SHIELD ASSEMBLY	COPPER
2	1	S-4857-4528		FLANGE	ALUMINUM
1	1	S-4857-4531	-001	CASTING, CYCLOALIPHATIC RESIN.	EC-APG-02

PARTS LIST					
GENERAL TOLERANCES (UNLESS OTHERWISE SPECIFIED)			<p style="text-align: center;">Electro Composites solid HV bushings solution</p> <p>TITLE: SDC® BUSHING 25kV, 2000A MODEL: 150-020-T-356-02</p>		
X.	±0.125	DRAWN BY: I. LÉVEILLÉ DATE: 2007/11/19 CHECK BY: PROJECT ENG.: PROJECT MANAGER:			
.X	±0.094				
.XX	±0.063				
.XXX	±0.031				
ANGLES	±0.25°	REMOVE BURRS AND BREAK SHARP EDGES DIMENSIONS ARE IN INCHES (UNLESS OTHERWISE SPECIFIED)	SCALE: 1:6	GENERATED BY: SolidWorks 2013	SHEET: 1 of 1
RADIUS	±0.031		FORMAT: A CAGE CODE: DRAWING NO.: S-4857-4531 REVISION: A		