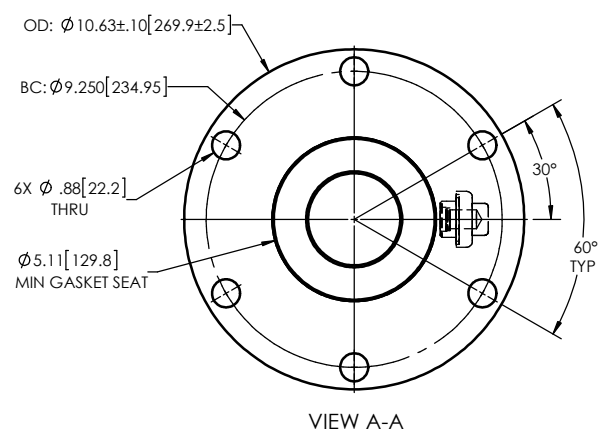
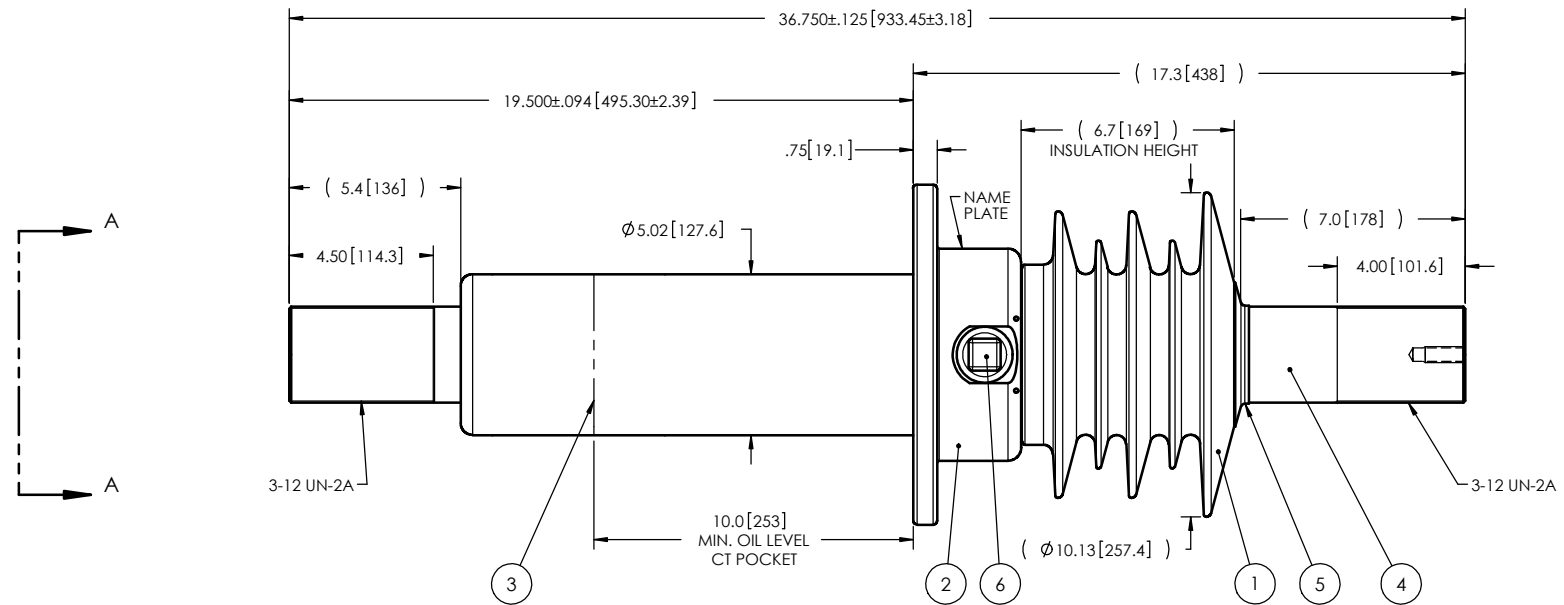


NOTES:

- 1 CREEPAGE DISTANCE: 20.3" / 516mm
- 2 ARC DISTANCE: 9.4" / 239mm
- 3 NOMINAL VOLTAGE: 15kV
- 4 NOMINAL CURRENT: 4000A
- 5 VOLTAGE WITHSTAND, 60 sec.: 50kV
- 6 BIL: 110kV
- 7 ROUTINE TEST IN ACCORDANCE TO IEEE C57.19.01
- 8 MAX. TORQUE APPLIED ON FLANGE BOLTS: 40 lbf · ft / 54.2 N · m
- 9 WEIGHT: 119 lb / 54.0 Kg

| REVISIONS | | | | | |
|-----------|------|-------------|----------|------|-------|
| ZONE | REV. | DESCRIPTION | DRAWN BY | DATE | APPR. |



| ITEM NO. | QTY | DRAWING NO. | PART NO. | DESCRIPTION | NOTE / MAT'L |
|----------|-----|-------------|----------|-------------------------------|--------------|
| 6 | 1 | S-1001-2022 | | CAPACITANCE TAP ASSEMBLY | ALUMINUM |
| 5 | 1 | S-3529-2532 | | CAP | COPPER |
| 4 | 1 | S-5900-5519 | | ROD ASSEMBLY | COPPER |
| 3 | 1 | S-5900-5524 | | SHIELD ASSEMBLY | COPPER |
| 2 | 1 | S-5900-5520 | | FLANGE | ALUMINUM |
| 1 | 1 | S-4698-8998 | -001 | CASTING, CYCLOALIPHATIC RESIN | EC-APG-02 |

| PARTS LIST | | | | | |
|------------------------------------------------------------------------------------------------------------------------------------------|---------------------|---------------|----------------------------------------------------------------------|------------------|---------------------------|
| GENERAL TOLERANCES (UNLESS OTHERWISE SPECIFIED) X. ±0.125 .X ±0.094 .XX ±0.063 .XXX ±0.031 ANGLES ±0.25° RADIUS ±0.031 | | | ElectroComposites™ solid HV bushings solution | | |
| REMOVE BURRS AND BREAK SHARP EDGES DIMENSIONS ARE IN INCHES (UNLESS OTHERWISE SPECIFIED) | | | TITLE: SDC® BUSHING 15kV, 4000A MODEL: 110-040-T-361-07 | | |
| DRAWN BY: J.N.PILOTTE | DATE: 2015/09/22 | PROJECT ING.: | PROJECT MANAGER: | FORMAT: A | CAGE CODE: S-4698-8998 |
| SCALE: 1:6 | | | GENERATED BY: SolidWorks 2013 | SHEET: 1 of 1 | REVISION: NR |

This drawing is the proprietary property of Electro Composites (2008) ULC, not part of the public domain, and is issued with the express understanding and agreement that it is not to be reproduced or copied in whole or in part or issued for furnishing information to others, or used directly or indirectly, in any way detrimental to the interest of Electro Composites (2008) ULC and is to be returned upon request by Electro Composites (2008) ULC. All Rights Reserved.