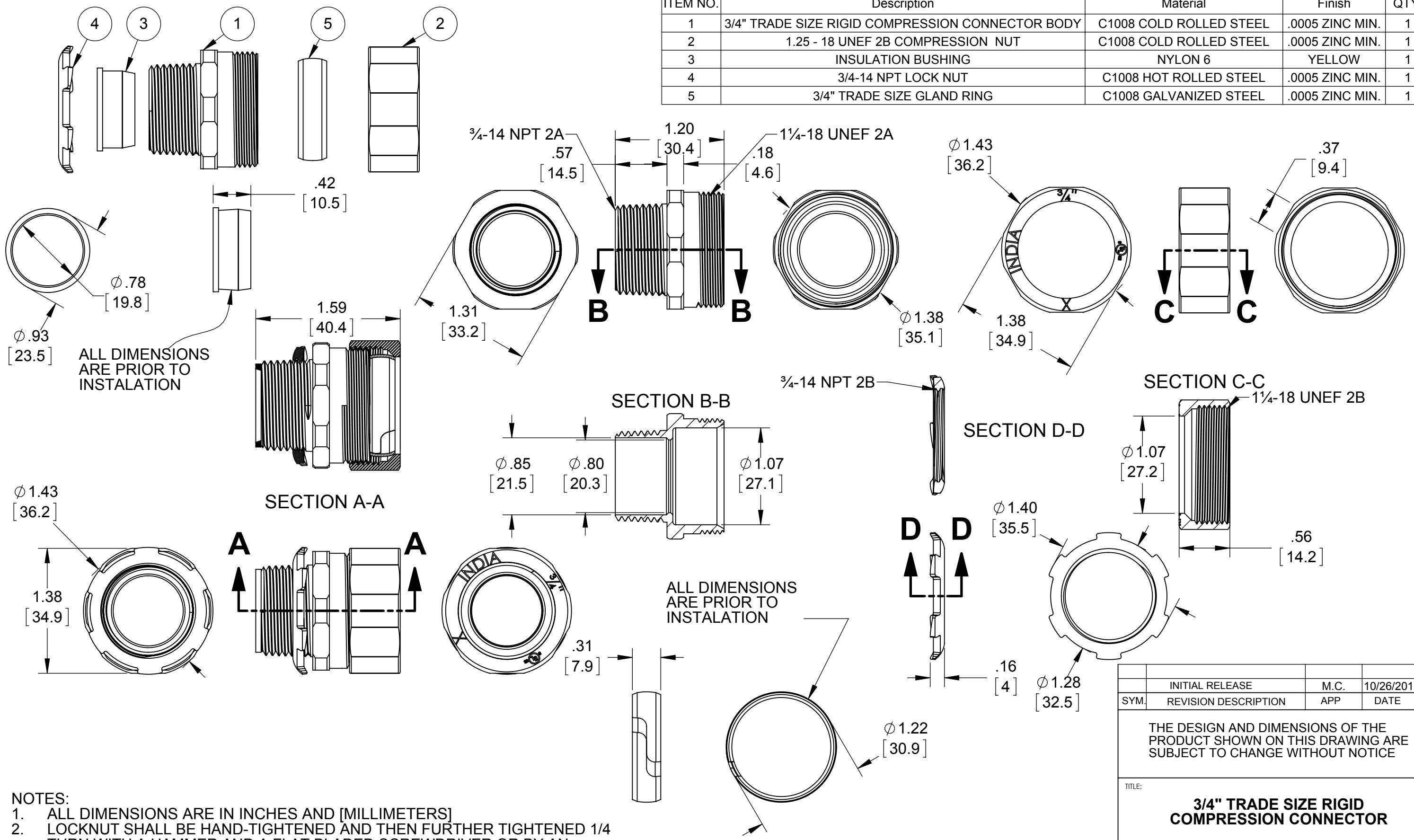


ITEM NO.	Description	Material	Finish	QTY.
1	3/4" TRADE SIZE RIGID COMPRESSION CONNECTOR BODY	C1008 COLD ROLLED STEEL	.0005 ZINC MIN.	1
2	1.25 - 18 UNEF 2B COMPRESSION NUT	C1008 COLD ROLLED STEEL	.0005 ZINC MIN.	1
3	INSULATION BUSHING	NYLON 6	YELLOW	1
4	3/4-14 NPT LOCK NUT	C1008 HOT ROLLED STEEL	.0005 ZINC MIN.	1
5	3/4" TRADE SIZE GLAND RING	C1008 GALVANIZED STEEL	.0005 ZINC MIN.	1



- NOTES:
1. ALL DIMENSIONS ARE IN INCHES AND [MILLIMETERS]
 2. LOCKNUT SHALL BE HAND-TIGHTENED AND THEN FURTHER TIGHTENED 1/4 TURN WITH A HAMMER AND A FLAT BLADED SCREWDRIVER OR BY AN EQUIVALENT METHOD
 3. COMPRESSION NUT IS TO BE TIGHTENED TO 500 LBF-IN TORQUE
 4. CONCRETE TIGHT
 5. cULus® LISTED

SYMBOL	REVISION DESCRIPTION	APP	DATE
	INITIAL RELEASE	M.C.	10/26/2015

THE DESIGN AND DIMENSIONS OF THE PRODUCT SHOWN ON THIS DRAWING ARE SUBJECT TO CHANGE WITHOUT NOTICE

TITLE:
3/4" TRADE SIZE RIGID COMPRESSION CONNECTOR

RACO South Bend, Indiana		SIZE: B
DRAWN BY:	J.RICHARD	SCALE: 1:1
APP. BY:	M.C.	
DATE:	10/26/2015	

TOLERANCE UNLESS OTHERWISE SPECIFIED:
.XX DECIMAL ±.015
.XXX DECIMAL ±.005
ANGLE ±2°