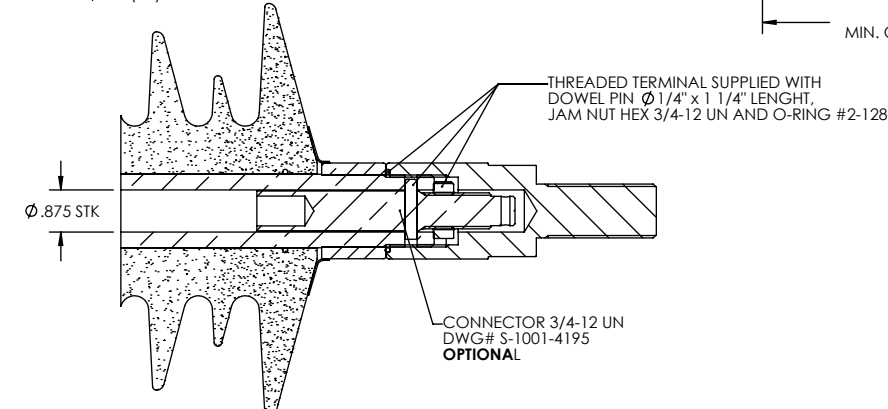
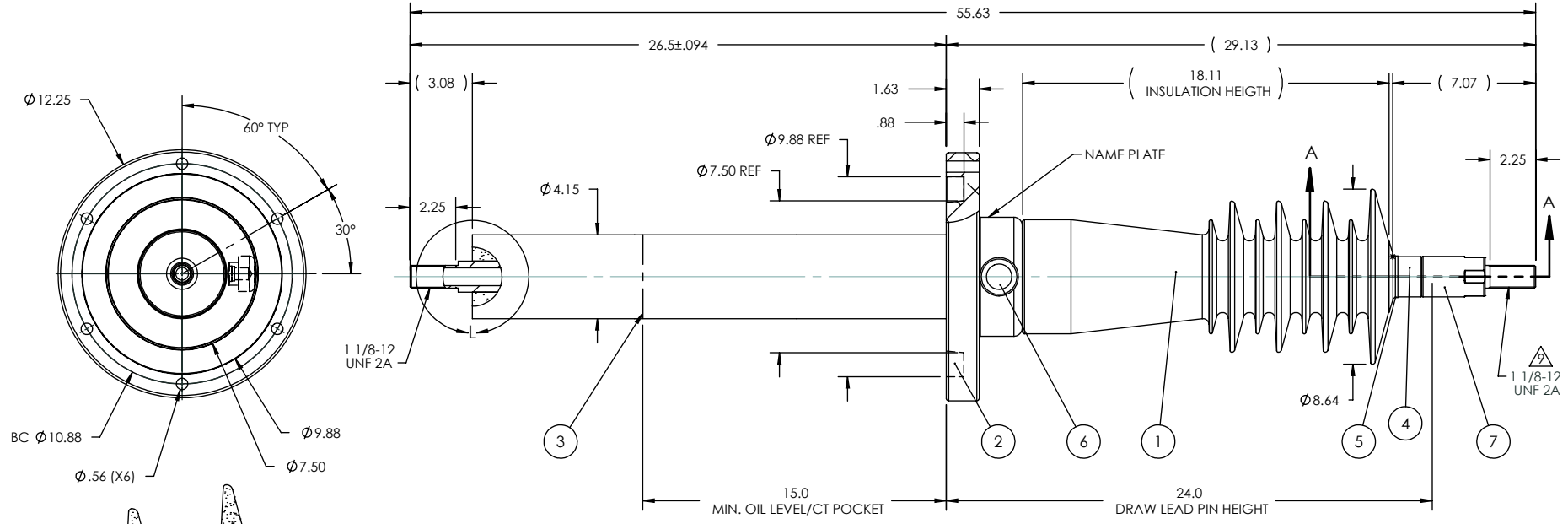
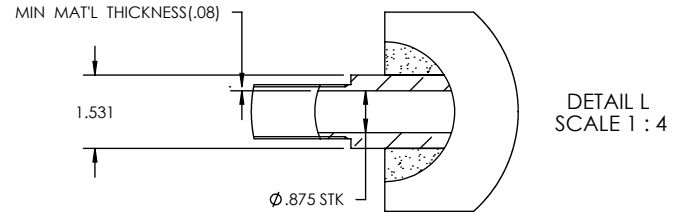


NOTES:

- 1 CREEPAGE DISTANCE: 38.00" / 965.2mm
- 2 ARC DISTANCE: 20" / 508mm
- 3 INSULATION LEVEL: 46/105/250kV
- 4 NOMINAL CURRENT: 400A
- 5 NOMINAL VOLTAGE: 46kV
- 6 APPLICATION STANDARD: IEEE C57.19.01
- 7 WITHSTAND VOLTAGE AT 60 sec.: 105kV
- 8 WEIGHT: 80 lbs / 36.28 Kg
- 9 SILVER PLATED TOP END, AS PER ASTM B700, TYPE 1, GRADE D, CLASS N, NO NICKEL LAYER, FROM 13 TO 20 MICROMETERS THICKNESS



ITEM NO.	QTY	DRAWING NO.	PART NO.	DESCRIPTION	NOTE / MAT'L
7	1	S-5171-4715		THREADED TERMINAL KIT	COPPER
6	1	S-1001-2022		CAPACITANCE TAP ASSEMBLY	ALUMINUM
5	1	S-1344-0162		CAP	COPPER
4	1	S-5171-4724		TUBE ASSEMBLY	COPPER
3	1	S-5171-4723		SHIELD ASSEMBLY	COPPER
2	1	S-5258-4823		FLANGE	ALUMINUM
1	1			CASTING, CYCLOALIPHATIC RESIN	EC-APG-02

GENERAL TOLERANCES (UNLESS OTHERWISE SPECIFIED) X. ±0.125 .X ±0.094 .XX ±0.063 .XXX ±0.010 ANGLES ±0.1° RADIUS ±0.031		REPLACE: DUKE S/C 42297-0 120	electrocomposites division of eci	
REMOVE BURRS AND BREAK SHARP EDGES DIMENSIONS ARE IN INCHES (UNLESS OTHERWISE SPECIFIED)		DRAWN BY: J.N.PILOTTE CHECK BY: PROJECT MGR.:	DATE: 2008/11/19 FORMAT: A SCALE: 1:8	TITLE: BUSHING 46kV, 400A MODEL: 250-004-T-383-00
		PROJECT NO.:	CAGE CODE:	DRAWING NO.: S-5171-4721
		PROJECT MANAGER:	GENERATED BY: SolidWorks 2008	REVISION: NR SHEET: 1 of 1

This drawing is the proprietary property of Electro Composites inc., not part of the public domain, and is issued with the express understanding and agreement that it is not to be reproduced or copied in whole or in part or issued for furnishing information to others, or used directly or indirectly, in any way detrimental to the interest of Electro Composites inc. and is to be returned upon request by Electro Composites inc. All Rights Reserved.