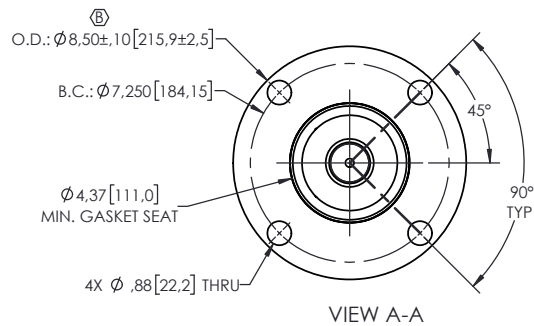
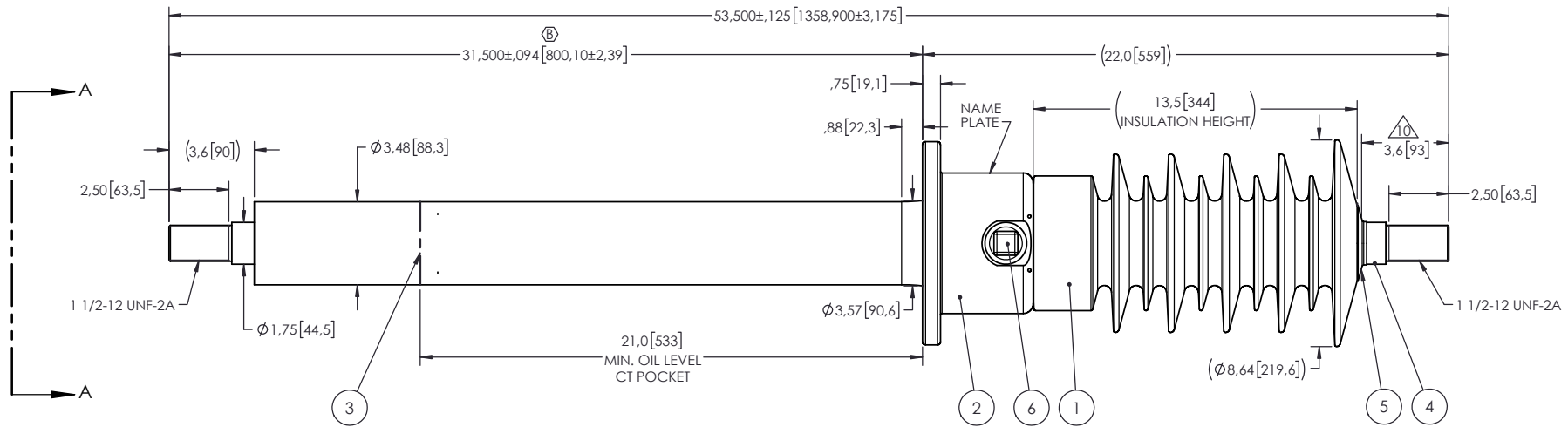


- NOTES:
- 1 CREEPAGE DISTANCE: 37.7" / 958mm
  - 2 ARC DISTANCE: 15.8" / 401 mm
  - 3 NOMINAL VOLTAGE: 34.5kV
  - 4 NOMINAL CURRENT: 2000A
  - 5 VOLTAGE WITHSTAND, 60 sec.: 80kV
  - 6 BIL : 200kV
  - 7 ROUTINE TEST ACCORDING TO: IEEE C57.19.01
  - 8 MAX. TORQUE APPLIED ON FLANGE BOLTS: 40 lbf·ft / 54.2 N·m
  - 9 WEIGHT: 81 lb / 36.7 kg
- 10 SILVER PLATED, AS PER ASTM B700, TYPE 1, GRADE D, CLASS N, NO NICKEL LAYER, FROM 13 TO 20 MICROMETERS THICKNESS

REVISIONS					
ZONE	REV.	DESCRIPTION	DRAWN BY	DATE	APPR.
A2 B6 B6	A	ADD THE "SDC" DESIGNATION TO THE BUSHING NAME. ADD THE "MINIMUM GASKET SEAT" DIMENSION. THE FLANGE O.D. CHANGE FROM 8.50" TO 8.5" TO ENLARGE THE TOLERANCE TO ±.094"	J. CLICHE	2015-01-13	Y.V.
E4, B6, B4	B	GENERAL UPDATE PER STANDARD + THE ROD ASSEMBLY HAS BEEN UPDATE : S-7642-10590 WAS S-7642-7216	A.SAVARD	2023-08-29	Y.V.



This drawing is the proprietary property of Electro Composites (2008) ULC, not part of the public domain, and is issued with the express understanding and agreement that it is not to be reproduced or copied in whole or in part or issued for furnishing information to others, or used directly or indirectly, in any way detrimental to the interest of Electro Composites (2008) ULC and is to be returned upon request by Electro Composites (2008) ULC. All Rights Reserved.

ITEM NO.	QTY	DRAWING NO.	PART NO.	DESCRIPTION	NOTE / MAT'L
6	1	S-1001-2022		CAPACITANCE TAP ASSEMBLY	ALUMINUM
5	1	S-1600-0587-0		CAP	COPPER
4	1	S-7642-10590		ROD ASSEMBLY	COPPER
3	1	S-7642-7215		SHIELD ASSEMBLY	COPPER
2	1	S-7642-7214		FLANGE	ALUMINUM
1	1	S-7642-7213	-001	CASTING, CYCLOALIPHATIC RESIN	EC-APG-02

PARTS LIST					
GENERAL TOLERANCES (UNLESS OTHERWISE SPECIFIED)			<b>Electro Composites™</b> <b>solid HV bushings solution</b>		
X.	±0.125	<b>TITLE:</b> <b>SDC® BUSHING 34.5kV 2000A</b> <b>MODEL: 200-020-T-389-02</b>			
.X	±0.094				
.XX	±0.063				
.XXX	±0.031				
ANGLES	±0.25°				
RADIUS	±0.031	<b>DRAWN BY:</b> J.N.PILOTTE <b>DATE:</b> 2012/04/20			
REMOVE BURRS AND BREAK SHARP EDGES			<b>FORMAT:</b> A <b>CAGE CODE:</b> <b>DRAWING NO.:</b> S-7642-7213 <b>REVISION:</b> B		
DIMENSIONS ARE IN INCHES (UNLESS OTHERWISE SPECIFIED)			<b>SCALE:</b> 1:7 <b>GENERATED BY:</b> SolidWorks 2022 <b>SHEET:</b> 1 of 1		