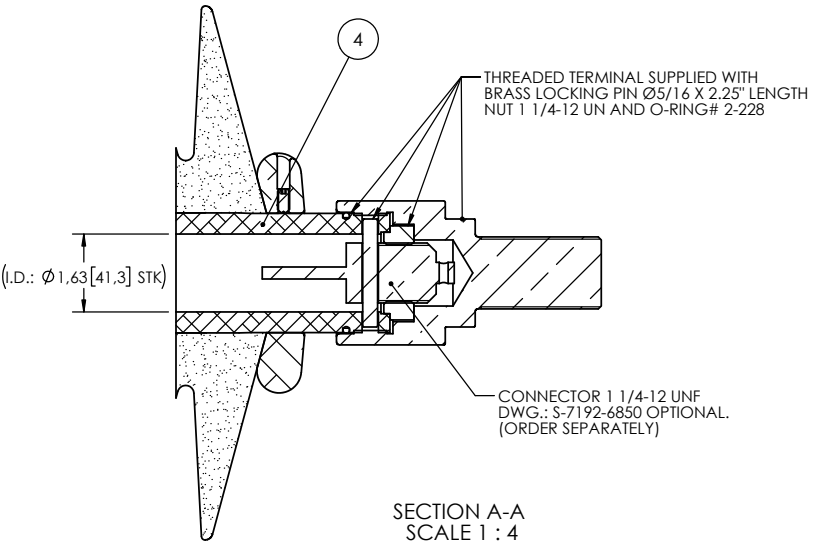
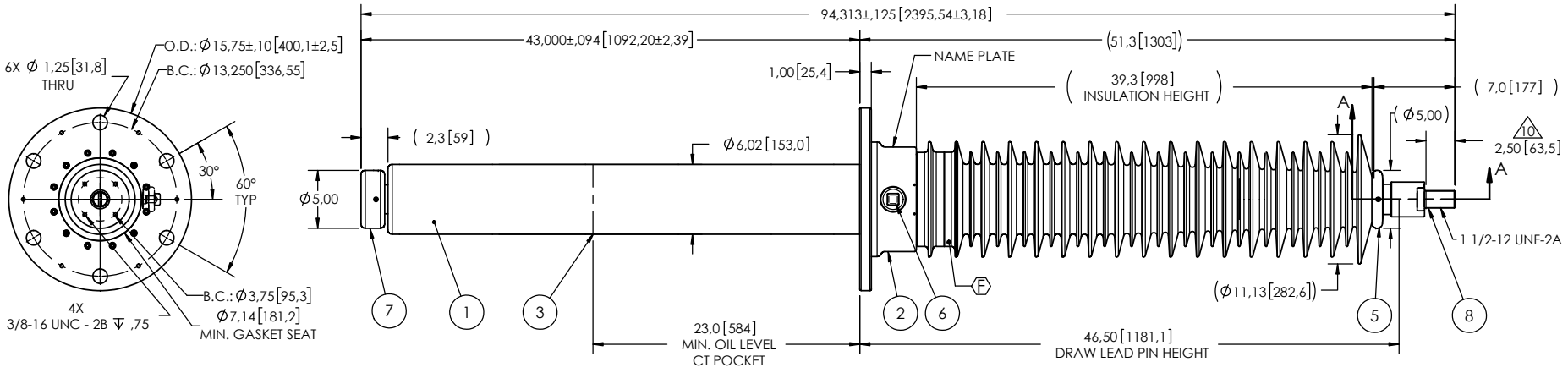


- NOTES:
- 1 CREEPAGE DISTANCE: 127.3" / 3234mm $\text{\textcircled{F}}$
 - 2 ARC DISTANCE: 41.7" / 1060mm
 - 3 NOMINAL VOLTAGE: 115kV
 - 4 NOMINAL CURRENT: 800A
 - 5 VOLTAGE WITHSTAND, 60 sec.: 260kV
 - 6 B.I.L. : 550kV
 - 7 ROUTINE TEST ACCORDING TO: IEEE C57.19.01
 - 8 MAX. TORQUE APPLIED ON FLANGE BOLTS: 70 lbf · ft / 94.9 N · m
 - 9 WEIGHT: 235 lb / 106.6 kg
 - $\text{\textcircled{10}}$ SILVER PLATED TOP END, AS PER ASTM B700, TYPE 1, GRADE D, CLASS N, NO NICKEL LAYER, FROM 13 TO 20 MICROMETERS THICKNESS
 - 11 FOR DRAW LEAD APPLICATION ONLY



This drawing is the proprietary property of Electro Composites (2008) ULC, not part of the public domain, and is issued with the express understanding and agreement that it is not to be reproduced or copied in whole or in part or issued for furnishing information to others, or used directly or indirectly, in any way detrimental to the interest of Electro Composites (2008) ULC and is to be returned upon request by Electro Composites (2008) ULC. All Rights Reserved.

REVISIONS					
ZONE	REV.	DESCRIPTION	DRAWN BY	DATE	APPR.
B4	A	ADD CONNECTOR NUMBER	J.N.PILOTTE	2009-06-26	J.V.
	B	THREADED TERMINAL KIT CHANGED+ TUBE ASSEMBLY MODIFIED + CORONA RING STYLE CAP CHANGED	A. SAVARD	2010-03-03	J.V.
	C	SHIELD ASSEMBLY WAS S-5023-5116 & TUBE MATERIAL WAS BRASS + NOTE #11 ADDED	A. SAVARD	2012-01-30	J.V.
	D	GENERAL UPDATE AS PER STANDARD	A. SAVARD	2015-10-05	J.V.
	E	THE DRAWLEAD TUBE HAS BEEN STANDARDIZED	A.SAVARD	2022-01-10	J.V.
D3, F5	F	SHEDS MODIFICATION FOR ADDITIONAL INSULATION ABOVE FLANGE + CREEPAGE DISTANCE WAS 130.8"	A.SAVARD	2023-05-15	J.V.

ITEM NO.	QTY	DRAWING NO.	PART NO.	DESCRIPTION	NOTE / MAT'L
8	1	S-5350-9640	S-5350-9640-1	THREADED TERMINAL KIT	COPPER
7	1	S-6830-10333		CORONA RING BOTTOM	ALUMINUM
6	1	S-2878-2606		CAPACITANCE TAP ASSEMBLY	ALUMINUM
5	1	S-7192-6849		CORONA RING TOP	ALUMINUM
4	1	S-5023-10325		TUBE ASSEMBLY	ALUMINUM
3	1	S-6830-10320		SHIELD ASSEMBLY	BRASS
2	1	S-5023-10324		FLANGE	ALUMINUM
1	1	S-5023-4905	-001	CASTING, CYCLOALIPHATIC RESIN	EC-APG-02

PARTS LIST					
GENERAL TOLERANCES (UNLESS OTHERWISE SPECIFIED)			<p>Electro Composites solid HV bushings solution</p> <p>TITLE: SDC® BUSHING 115kV, 800A MODEL: 550-008-T-414-00</p>		
X.	±0.125				
.X	±0.094				
.XX	±0.063				
.XXX	±0.031				
ANGLES	±0.25°				
RADIUS	±0.031				
REMOVE BURRS AND BREAK SHARP EDGES			DRAWN BY: D. DELISLE DATE: 2008/11/12		
DIMENSIONS ARE IN INCHES (UNLESS OTHERWISE SPECIFIED)			CHECK BY:		
			PROJECTING:		
			PROJECT MANAGER:		
SCALE: 1:14		CAGE CODE		DRAWING NO. S-5023-4905	
GENERATED BY: SolidWorks 2022		REVISION: F		SHEET: 1 of 1	