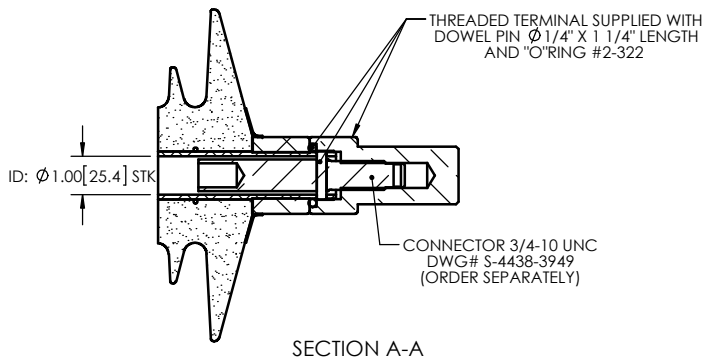
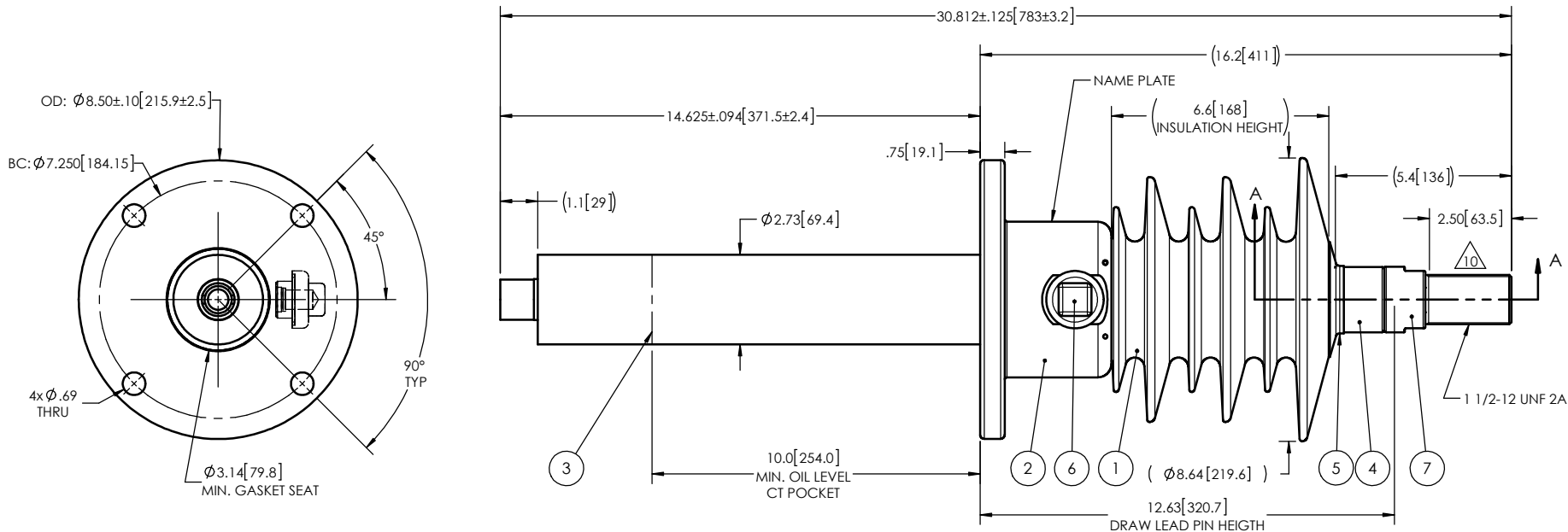


- NOTES:
- 1 CREEPAGE DISTANCE: 21.0" / 534mm
  - 2 ARC DISTANCE: 9.1" / 231mm
  - 3 NOMINAL VOLTAGE: 15kV
  - 4 NOMINAL CURRENT: 400A
  - 5 VOLTAGE WITHSTAND, 60 sec.: 50kV
  - 6 BIL: 110kV
  - 7 APPLICATION STANDARD: CSA C88.1-96
  - 8 MAX. TORQUE APPLIED ON FLANGE BOLTS: 40 lbf·ft / 54.2 N·m
  - 9 WEIGHT: 27 lb / 12.2 Kg
- 10 TIN PLATED AS PER ASTM B545, ART. 4, SERVICE CLASS C, MIN. THICKNESS 320 µin.

REVISIONS					
ZONE	REV.	DESCRIPTION	DRAWN BY	DATE	APPR.



ITEM NO.	QTY	DRAWING NO.	PART NO.	DESCRIPTION	NOTE / MAT'L
7	1	S-4831-4209-2		THREADED TERMINAL KIT	COPPER
6	1	S-1001-2022		CAPACITANCE TAP ASSEMBLY	ALUMINUM
5	1	S-1344-0162-1		CAP	ALUMINUM
4	1	S-8680-8035		TUBE ASSEMBLY	ALUMINUM
3	1	S-8680-8034		SHIELD ASSEMBLY	COPPER
2	1	S-8680-8033		FLANGE	ALUMINUM
1	1	S-3547-8818	-001	CASTING, CYCLOALIPHATIC RESIN	EC-APG-02

PARTS LIST

GENERAL TOLERANCES (UNLESS OTHERWISE SPECIFIED)

X.	±0.125
.X	±0.094
.XX	±0.063
.XXX	±0.010
ANGLES	±0.25°
RADIUS	±0.031

REMOVE BURRS AND BREAK SHARP EDGES

DIMENSIONS ARE IN INCHES (UNLESS OTHERWISE SPECIFIED)

REPLACE:

DRAWN BY: J.N.PILOTTE DATE: 2015/05/25

CHECK BY:

PROJECTING:

PROJECT MANAGER:

**Electro Composites**  
solid HV bushings solution

TITLE: SDC® BUSHING 15kV, 400A  
MODEL: 110-004-T-434-05

FORMAT

CAGE CODE

DRAWING NO.

REVISION

SCALE

1:5



GENERATED BY:

SolidWorks 2013

SHEET

1 of 1

This drawing is the proprietary property of Electro Composites (2008) ULC, not part of the public domain, and is issued with the express understanding and agreement that it is not to be reproduced or copied in whole or in part or issued for furnishing information to others, or used directly or indirectly, in any way detrimental to the interest of Electro Composites (2008) ULC and is to be returned upon request by Electro Composites (2008) ULC. All Rights Reserved.